

修订 REV	标记 MARK	修改摘要 REVISION DESCRIPTION	签名 SIGNATURE	日期 DATE
AO		NEW RELEASE	WANG	2012-12-10

Ordering Information:

HDGC2541H-XP - ** - **
1 2 3

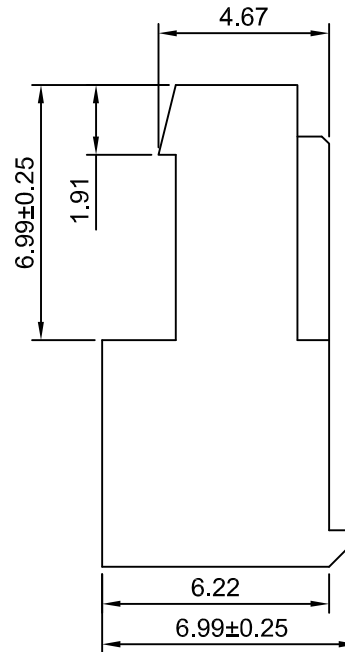
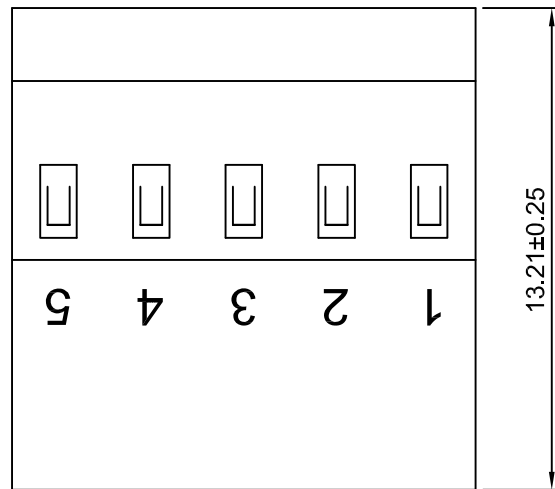
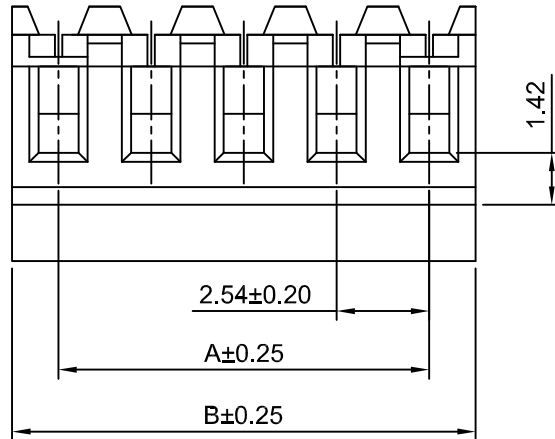
1:Part No.

2:Material:

- RD-Red=22AWG(UL94V-2)
- WH-White=24 AWG (UL94V-2)
- BL-Blue=26 AWG(UL94V-2)
- GN-Green=28 AWG(UL94V-2)
- BK-22-Black=22AWG(UL94V-0)
- BK-24-Black=24AWG(UL94V-0)
- BK-26-Black=26AWG(UL94V-0)
- BK-28-Black=28AWG(UL94V-0)

3:Plating Code:

- (Blank)-Phosphor bronze/Tin over Nickel
- GP-Phosphor bronze/Gold over Nickel
(Optional Gold plating available but MOQ requested)



SPECIFICATIONS:

- Current Rating: 3A AC,DC
- Voltage Rating: 250V AC,DC
- Temperature Range:-25°C~+85°C
- Contact Resistance: 20mΩ Max.
- Insulation Resistance: 1000MΩ Min.
- Withstanding Voltage: 1500V AC/minute
- Housing Material: Nylon66 UL 94V-2 or UL94V-0
- Terminal Material: Phosphor bronze/Tin over Nickel

Ordering Information & Dimensions

Circuits	Dimensions(mm)		Circuits	Dimensions(mm)	
	A	B		A	B
2P	2.54	5.08	14P	33.02	35.56
3P	5.08	7.62	15P	35.56	38.10
4P	7.62	10.16	16P	38.10	40.64
5P	10.16	12.70	17P	40.64	43.18
6P	12.70	15.24	18P	43.18	45.72
7P	15.24	17.78	19P	45.72	48.26
8P	17.78	20.32	20P	48.26	50.80
9P	20.32	22.86	21P	50.80	53.34
10P	22.86	25.40	22P	53.34	55.88
11P	25.40	27.94	23P	55.88	58.42
12P	27.94	30.48	24P	58.42	60.96
13P	30.48	33.02			



深圳市华德共创科技有限公司

Shenzhen Huade co-create Technology Co.,LTD

TEL : 0755-27129737 FAX : 0755-29940187

-TOLERANCES- UNLESS OTHERWISE SPECIFIED 公差参数表						TITLE: 2.54mm IDC 产品名称: Closed End Type			
X.X	±0.30	X.X°	±3°	APPD: 核准:	XIE	PART NO: 产品编号: HDGC2544H-XP			
X.XX	±0.30	X.XX°	±2°	CHECK: 校对:	WANG	DATE	SCALE	UNIT	CODE NUMBER
X.XXX	±0.10	X.XXX°	±1°	DRAW: 绘图:	WANG	2012-12-10	5:1	mm	A008

修订 REV	标记 MARK	修改摘要 REVISION DESCRIPTION	签名 SIGNATURE	日期 DATE
AO		NEW RELEASE	WANG	2012-12-10

Ordering Information:

HDGC2541HA-XP - ** - **
1 2 3

1:Part No.

2:Material:

RD-Red=22AWG(UL94V-2)
WH-White=24 AWG (UL94V-2)
BL-Blue=26 AWG(UL94V-2)
GN-Green=28 AWG(UL94V-2)
BK-22-Black=22AWG(UL94V-0)
BK-24-Black=24AWG(UL94V-0)
BK-26-Black=26AWG(UL94V-0)
BK-28-Black=28AWG(UL94V-0)

3:Plating Code:

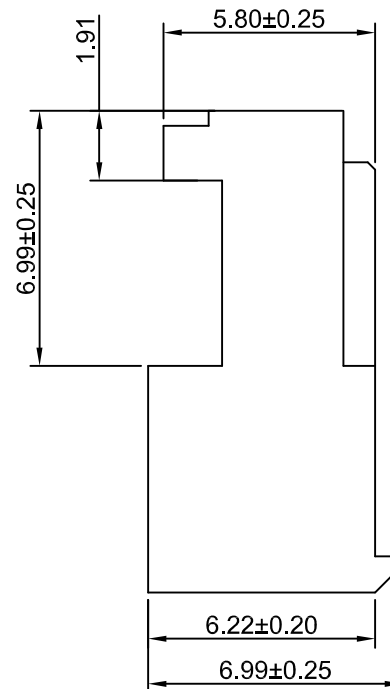
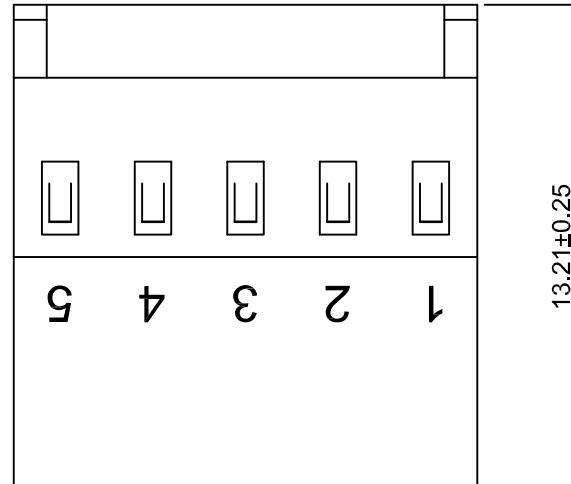
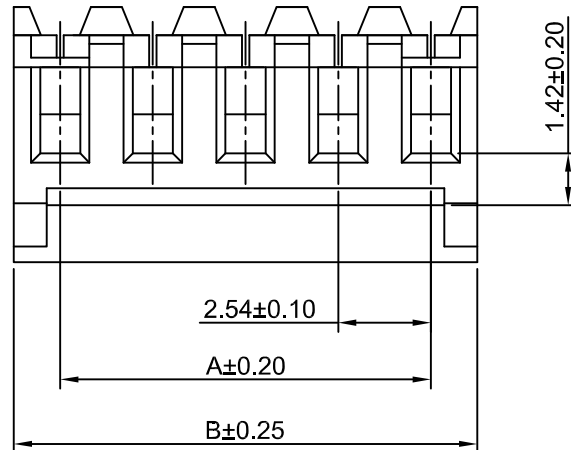
(Blank)-Phosphor bronze/Tin over Nickel
GP-Phosphor bronze/Gold over Nickel
(Optional Gold plating available but MOQ requested)

SPECIFICATIONS:

Current Rating: 3A AC,DC
Voltage Rating: 250V AC,DC
Temperature Range: -25°C~+85°C
Contact Resistance: 20mΩ Max.
Insulation Resistance: 1000MΩ Min.
Withstanding Voltage: 1500V AC/minute
Housing Material: Nylon66 UL 94V-2 or UL94V-0
Terminal Material: Phosphor bronze/Tin over Nickel

Ordering Information & Dimensions

Circuits	Dimensions(mm)		Circuits	Dimensions(mm)	
	A	B		A	B
2P	2.54	5.08	14P	33.02	35.56
3P	5.08	7.62	15P	35.56	38.10
4P	7.62	10.16	16P	38.10	40.64
5P	10.16	12.70	17P	40.64	43.18
6P	12.70	15.24	18P	43.18	45.72
7P	15.24	17.78	19P	45.72	48.26
8P	17.78	20.32	20P	48.26	50.80
9P	20.32	22.86	21P	50.80	53.34
10P	22.86	25.40	22P	53.34	55.88
11P	25.40	27.94	23P	55.88	58.42
12P	27.94	30.48	24P	58.42	60.96
13P	30.48	33.02			



HDGC 深圳市华德共创科技有限公司
Shenzhen Huade co-create Technology Co.,LTD
TEL : 0755-27129737 FAX : 0755-29940187

-TOLERANCES- UNLESS OTHERWISE SPECIFIED 公差参数表				TITLE: 2.54mm IDC 产品名称: Closed End Type	
X.X	±0.30	X.X°	±3°	APPD: 核准:	XIE
X.XX	±0.30	X.XX°	±2°	CHECK: 校对:	WANG
X.XXX	±0.10	X.XXX°	±1°	DRAW: 绘图:	WANG
PART NO: 产品编号:				HDGC2544HA-XP	
DATE		SCALE	UNIT	CODE NUMBER	
2012-12-10		5:1	mm	A008	

修订 REV	标记 MARK	修改摘要 REVISION DESCRIPTION	签名 SIGNATURE	日期 DATE
AO		NEW RELEASE	WANG	2012-12-10

Ordering Information:

HDGC2541HB-XP - ** - **
1 2 3

1:Part No.

2:Material:

RD-Red=22AWG(UL94V-2)
WH-White=24 AWG (UL94V-2)
BL-Blue=26 AWG(UL94V-2)
GN-Green=28 AWG(UL94V-2)
BK-22-Black=22AWG(UL94V-0)
BK-24-Black=24AWG(UL94V-0)
BK-26-Black=26AWG(UL94V-0)
BK-28-Black=28AWG(UL94V-0)

3:Plating Code:

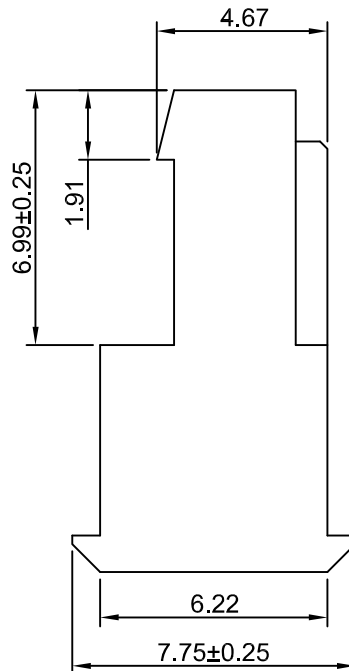
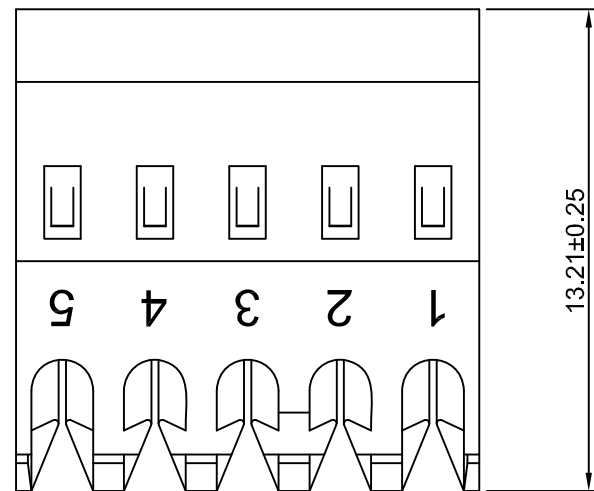
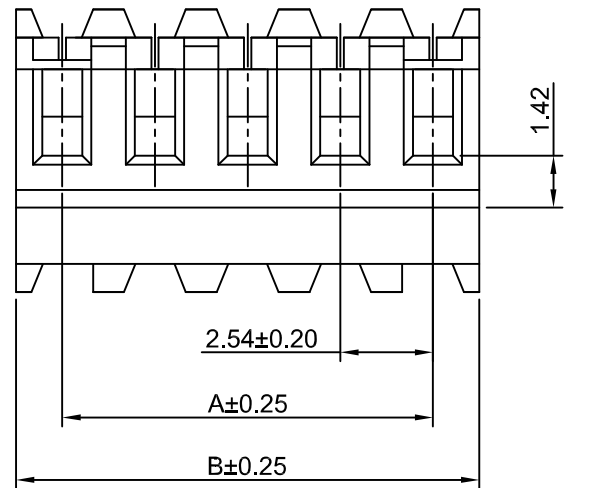
(Blank)-Phosphor bronze/Tin over Nickel
GP-Phosphor bronze/Gold over Nickel
(Optional Gold plating available
but MOQ requested)

SPECIFICATIONS:

Current Rating: 3A AC,DC
Voltage Rating: 250V AC,DC
Temperature Range:-25°C~+85°C
Contact Resistance: 20mΩ Max.
Insulation Resistance: 1000MΩ Min.
Withstanding Voltage: 1500V AC/minute
Housing Material: Nylon66 UL 94V-2 or UL94V-0
Terminal Material: Phosphor bronze/Tin over Nickel

Ordering Information & Dimensions

Circuits	Dimensions(mm)		Circuits	Dimensions(mm)	
	A	B		A	B
2P	2.54	5.08	14P	33.02	35.56
3P	5.08	7.62	15P	35.56	38.10
4P	7.62	10.16	16P	38.10	40.64
5P	10.16	12.70	17P	40.64	43.18
6P	12.70	15.24	18P	43.18	45.72
7P	15.24	17.78	19P	45.72	48.26
8P	17.78	20.32	20P	48.26	50.80
9P	20.32	22.86	21P	50.80	53.34
10P	22.86	25.40	22P	53.34	55.88
11P	25.40	27.94	23P	55.88	58.42
12P	27.94	30.48	24P	58.42	60.96
13P	30.48	33.02			



深圳市华德共创科技有限公司
Shenzhen Huade co-create Technology Co.,LTD
TEL : 0755-27129737 FAX : 0755-29940187

-TOLERANCES- UNLESS OTHERWISE SPECIFIED 公差参数表			TITLE: 2.54mm IDC 产品名称: Feed-Thru Connector			
X.X ±0.30	X.X° ±3°	APPD: 核准: XIE	PART NO: 产品编号: HDGC2544HB-XP			
X.XX ±0.30	X.XX° ±2°	CHECK: 校对: WANG	DATE	SCALE	UNIT	CODE NUMBER
X.XXX ±0.10	X.XXX° ±1°	DRAW: 绘图: WANG	2012-12-10	5:1	mm	A008

修订 REV	标记 MARK	修改摘要 REVISION DESCRIPTION	签名 SIGNATURE	日期 DATE
AO		NEW RELEASE	WANG	2012-12-10

Ordering Information:

HDGC2541HC-XP - $\frac{**}{1}$ - $\frac{**}{2}$ - $\frac{**}{3}$

1:Part No.

2:Material:

RD-Red=22AWG OD:1.40mm Max(UL94V-2)
 WH-White=24 AWG OD:1.40mm Max(UL94V-2)
 BL-Blue=26 AWG OD:1.20mm Max(UL94V-2)
 GN-Green=28 OD:1.20mm MaxAWG(UL94V-2)
 BK-22-Black=22AWG OD:1.40mm Max(UL94V-0)
 BK-24-Black=24AWG OD:1.40mm Max(UL94V-0)
 BK-26-Black=26AWG OD:1.20mm Max(UL94V-0)
 BK-28-Black=28AWG OD:1.20mm Max(UL94V-0)

3:Plating Code:

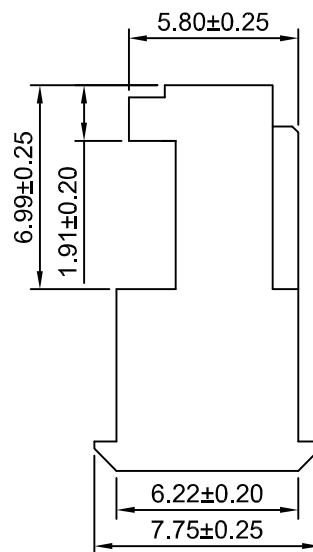
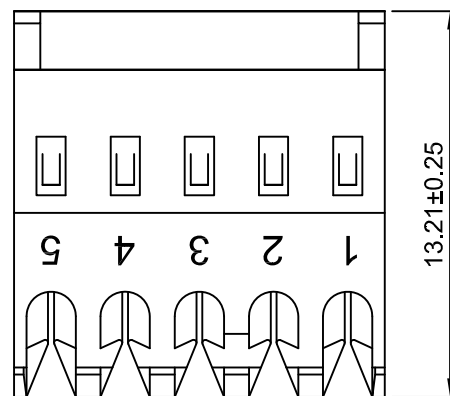
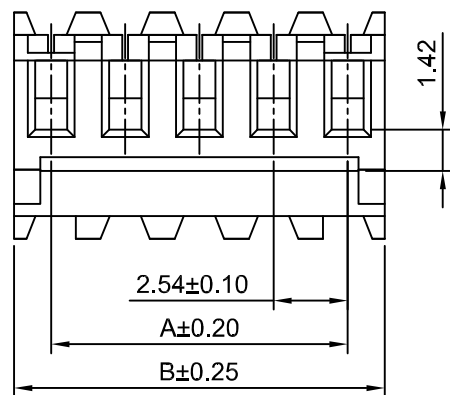
(Blank)-Phosphor bronze/Tin over Nickel, Ni:30~50u"(0.76~1.27um)
 GP-Phosphor bronze/Gold over Nickel,
 Au:1u"(0.0254um) MIN, Ni:30~50u"(0.76~1.27um)
 (Optional Gold plating available but MOQ requested)
 G15-Phosphor bronze/Gold over Nickel,
 Au:15u"(0.38um) MIN, Ni:30~50u"(0.76~1.27um)
 (Optional Gold plating available but MOQ requested)
 G30-Phosphor bronze/Gold over Nickel,
 Au:30u"(0.76um) MIN, Ni:30~50u"(0.76~1.27um)
 (Optional Gold plating available but MOQ requested)

SPECIFICATIONS:

Current Rating: 3A AC,DC
 Voltage Rating: 250V AC,DC
 Temperature Range:-25°C~+85°C
 Contact Resistance: 20mΩ Max.
 Insulation Resistance: 1000MΩ Min.
 Withstanding Voltage: 1500V AC/minute
 Housing Material: Nylon66 UL 94V-2 or UL94V-0
 Terminal Material: Phosphor bronze/Tin over Nickel

Ordering Information & Dimensions

Circuits	Dimensions(mm)		Circuits	Dimensions(mm)	
	A	B		A	B
2P	2.54	5.08	14P	33.02	35.56
3P	5.08	7.62	15P	35.56	38.10
4P	7.62	10.16	16P	38.10	40.64
5P	10.16	12.70	17P	40.64	43.18
6P	12.70	15.24	18P	43.18	45.72
7P	15.24	17.78	19P	45.72	48.26
8P	17.78	20.32	20P	48.26	50.80
9P	20.32	22.86	21P	50.80	53.34
10P	22.86	25.40	22P	53.34	55.88
11P	25.40	27.94	23P	55.88	58.42
12P	27.94	30.48	24P	58.42	60.96
13P	30.48	33.02			



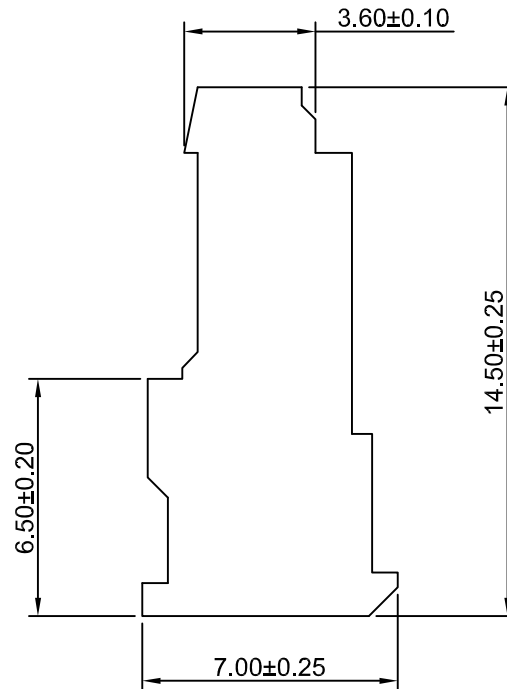
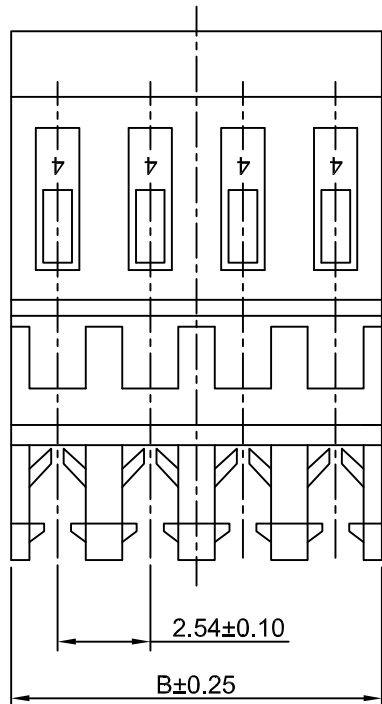
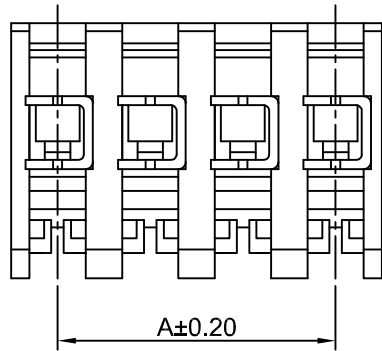
HDGC 深圳市华德共创科技有限公司
 Shenzhen Huade co-create Technology Co.,LTD
 TEL : 0755-27129737 FAX : 0755-29940187

-TOLERANCES- UNLESS OTHERWISE SPECIFIED 公差参数表				TITLE: 2.54mm IDC 产品名称: Feed-Thru Connector	
X.X	±0.30	X.X°	±3°	APPD: 核准:	XIE
X.XX	±0.30	X.XX°	±2°	CHECK: 校对:	WANG
X.XXX	±0.10	X.XXX°	±1°	DRAW: 绘图:	WANG
PART NO: 产品编号:		HDGC2544HC-XP			
DATE	SCALE	UNIT	CODE NUMBER		
2012-12-10	4:1	mm	A008		

修订 REV	标记 MARK	修改摘要 REVISION DESCRIPTION	签名 SIGNATURE	日期 DATE
AO		NEW RELEASE	WANG	2019-03-10

Ordering Information:
 HDGC2541HD-XP - ** - **
 1 2 3

- Part No.
- Wire Range and Material:
 - 2-22 AWG OD:1.40mm Max(UL94-V2)
 - 4-24 AWG OD:1.40mm Max(UL94-V2)
 - 6-26 AWG OD:1.20mm Max(UL94-V2)
 - 8-28 AWG OD:1.20mm Max(UL94-V2)
- Plating Code:
 - (Blank)-Phosphor bronze/Tin over Nickel,Ni:30~50u"(0.76~1.27um)
 - GP-Phosphor bronze/Gold over Nickel,
 - Au:1u"(0.0254um) MIN,Ni:30~50u"(0.76~1.27um)
 - (Optional Gold plating available but MOQ requested)
 - G15-Phosphor bronze/Gold over Nickel,
 - Au:15u"(0.38um) MIN,Ni:30~50u"(0.76~1.27um)
 - (Optional Gold plating available but MOQ requested)
 - G30-Phosphor bronze/Gold over Nickel,
 - Au:30u"(0.76um) MIN,Ni:30~50u"(0.76~1.27um)
 - (Optional Gold plating available but MOQ requested)



SPECIFICATIONS:

Current Rating: 3A AC,DC
 Voltage Rating: 250V AC,DC
 Temperature Range: -25°C~+85°C
 Contact Resistance: 20mΩ Max.
 Insulation Resistance: 1000MΩ Min.
 Withstanding Voltage: 1500V AC/minute
 Housing Material: Nylon 66,UL94V-2 or UL94V-0 (White)
 Terminal Material: Phosphor bronze/Tin over Nickel

Ordering Information & Dimensions

Circuits	Dimensions(mm)		Circuits	Dimensions(mm)	
	A	B		A	B
2P	2.54	5.08	10P	22.86	25.40
3P	5.08	7.62	11P	25.40	27.94
4P	7.62	10.16	12P	27.94	30.48
5P	10.16	12.70	13P	30.48	33.02
6P	12.70	15.24	14P	33.02	35.56
7P	15.24	17.78	15P	35.56	38.10
8P	17.78	20.32	16P	38.10	40.64
9P	20.32	22.86	17P	40.64	43.18



深圳市华德共创科技有限公司

Shenzhen Huade co-create Technology Co.,LTD

TEL : 0755-27129737 FAX : 0755-29940187

-TOLERANCES- UNLESS OTHERWISE SPECIFIED 公差参数表						TITLE: 2.54mm IDC Closed 产品名称: End IDC Connector			
X.X	±0.30	X.X°	±3°	APPD: 核准:	XIE	PART NO: 产品编号: HDGC2544HD-XP			
X.XX	±0.30	X.XX°	±2°	CHECK: 校对:	WANG	DATE	SCALE	UNIT	CODE NUMBER
X.XXX	±0.10	X.XXX°	±1°	DRAW: 绘图:	WANG	2019-03-10	5:1	mm	A008

修订 REV	标记 MARK	修改摘要 REVISION DESCRIPTION	签名 SIGNATURE	日期 DATE
AO		NEW RELEASE	WANG	2019-03-10

Ordering Information:

HDGC2541HE-XP - ** - **
1 2 3

1.Part No.

2.Wire Range and Material:

2-22 AWG OD:1.40mm Max(UL94-V2)

4-24 AWG OD:1.40mm Max(UL94-V2)

6-26 AWG OD:1.20mm Max(UL94-V2)

8-28 AWG OD:1.20mm Max(UL94-V2)

3.Plating Code:

(Blank)-Phosphor bronze/Tin over Nickel,Ni:30~50u"(0.76~1.27um)

GP-Phosphor bronze/Gold over Nickel,

Au:1u"(0.0254um) MIN,Ni:30~50u"(0.76~1.27um)

(Optional Gold plating available but MOQ requested)

G15-Phosphor bronze/Gold over Nickel,

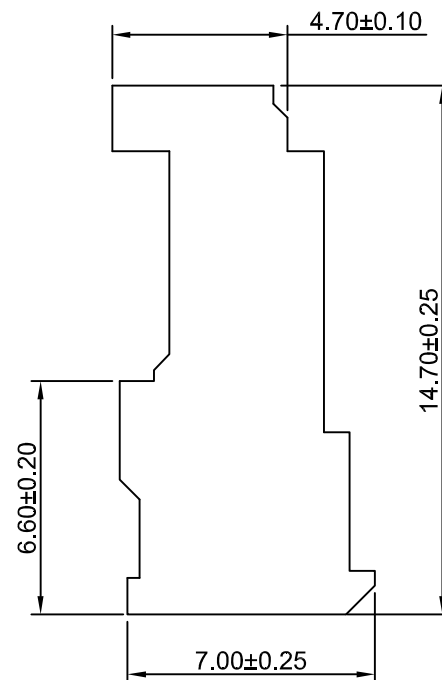
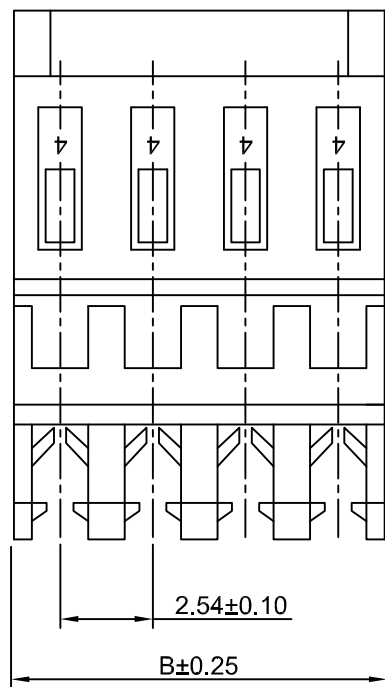
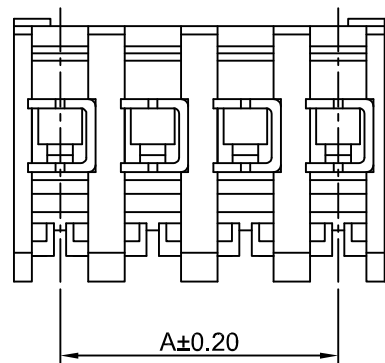
Au:15u"(0.38um) MIN,Ni:30~50u"(0.76~1.27um)

(Optional Gold plating available but MOQ requested)

G30-Phosphor bronze/Gold over Nickel,

Au:30u"(0.76um) MIN,Ni:30~50u"(0.76~1.27um)

(Optional Gold plating available but MOQ requested)



SPECIFICATIONS:

Current Rating: 3A AC,DC

Voltage Rating: 250V AC,DC

Temperature Range:-25°C~+85°C

Contact Resistance: 20mΩ Max.

Insulation Resistance: 1000MΩ Min.

Withstanding Voltage: 1500V AC/minute

Housing Material: Nylon 66,UL94V-2 or UL94V-0 (White)

Terminal Material: Phosphor bronze/Tin over Nickel

Ordering Information & Dimensions

Circuits	Dimensions(mm)		Circuits	Dimensions(mm)	
	A	B		A	B
2P	2.54	5.08	10P	22.86	25.40
3P	5.08	7.62	11P	25.40	27.94
4P	7.62	10.16	12P	27.94	30.48
5P	10.16	12.70	13P	30.48	33.02
6P	12.70	15.24	14P	33.02	35.56
7P	15.24	17.78	15P	35.56	38.10
8P	17.78	20.32	16P	38.10	40.64
9P	20.32	22.86	17P	40.64	43.18



深圳市华德共创科技有限公司

Shenzhen Huade co-create Technology Co.,LTD

TEL : 0755-27129737 FAX : 0755-29940187

-TOLERANCES- UNLESS OTHERWISE SPECIFIED 公差参数表				TITLE: 产品名称: 2.54mm IDC Closed End IDC Connector	
X.X	±0.30	X.X°	±3°	APPD: 核准:	XIE
X.XX	±0.30	X.XX°	±2°	CHECK: 校对:	WANG
X.XXX	±0.10	X.XXX°	±1°	DRAW: 绘图:	WANG
PART NO: 产品编号:				HDGC2544HE-XP	
DATE		SCALE	UNIT	CODE NUMBER	
2019-03-10		5:1	mm	A008	

修订 REV	标记 MARK	修改摘要 REVISION DESCRIPTION	签名 SIGNATURE	日期 DATE
AO		NEW RELEASE	WANG	2019-03-10

Ordering Information:

HDGC2541HF-XP - ** - **
1 2 3

1.Part No.

2.Wire Range and Material:

2-22 AWG OD:1.40mm Max(UL94-V2)

4-24 AWG OD:1.40mm Max(UL94-V2)

6-26 AWG OD:1.20mm Max(UL94-V2)

8-28 AWG OD:1.20mm Max(UL94-V2)

3.Plating Code:

(Blank)-Phosphor bronze/Tin over Nickel,Ni:30~50u"(0.76~1.27um)

GP-Phosphor bronze/Gold over Nickel,

Au:1u"(0.0254um) MIN,Ni:30~50u"(0.76~1.27um)

(Optional Gold plating available but MOQ requested)

G15-Phosphor bronze/Gold over Nickel,

Au:15u"(0.38um) MIN,Ni:30~50u"(0.76~1.27um)

(Optional Gold plating available but MOQ requested)

G30-Phosphor bronze/Gold over Nickel,

Au:30u"(0.76um) MIN,Ni:30~50u"(0.76~1.27um)

(Optional Gold plating available but MOQ requested)

SPECIFICATIONS:

Current Rating: 3A AC,DC

Voltage Rating: 250V AC,DC

Temperature Range:-25°C~+85°C

Contact Resistance: 20mΩ Max.

Insulation Resistance: 1000MΩ Min.

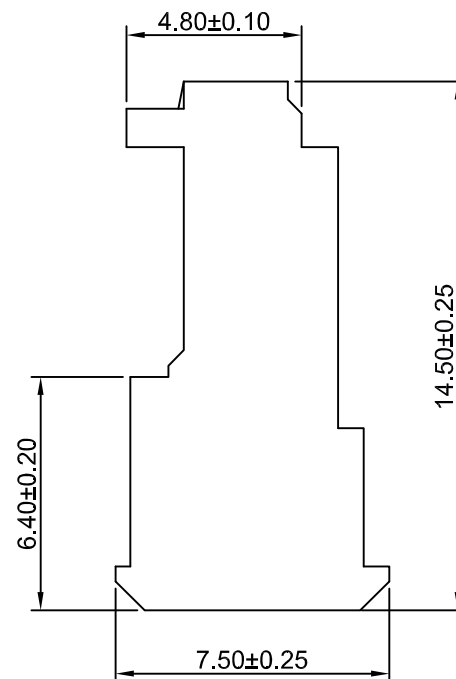
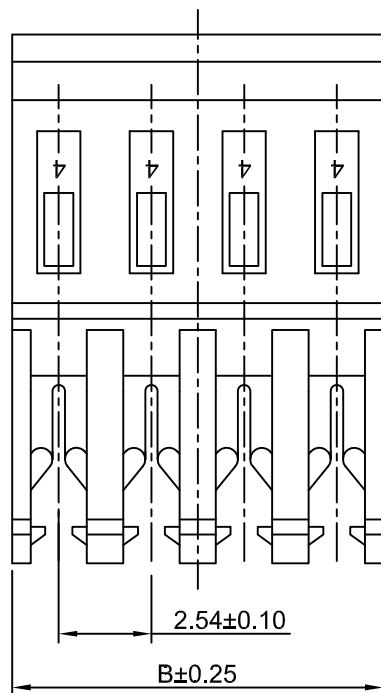
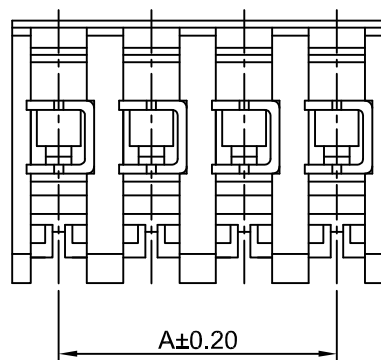
Withstanding Voltage: 1500V AC/minute

Housing Material: Nylon 66,UL94V-2 or UL94V-0(White)

Terminal Material: Phosphor bronze/Tin over Nickel

Ordering Information & Dimensions

Circuits	Dimensions(mm)		Circuits	Dimensions(mm)	
	A	B		A	B
2P	2.54	5.08	10P	22.86	25.40
3P	5.08	7.62	11P	25.40	27.94
4P	7.62	10.16	12P	27.94	30.48
5P	10.16	12.70	13P	30.48	33.02
6P	12.70	15.24	14P	33.02	35.56
7P	15.24	17.78	15P	35.56	38.10
8P	17.78	20.32	16P	38.10	40.64
9P	20.32	22.86	17P	40.64	43.18



深圳市华德共创科技有限公司

Shenzhen Huade co-create Technology Co.,LTD
TEL : 0755-27129737 FAX : 0755-29940187

-TOLERANCES- UNLESS OTHERWISE SPECIFIED 公差参数表				TITLE: 2.54mm IDC Closed 产品名称: End IDC Connector							
X.X	±0.30	X.X°	±3°	APPD: 核准:	XIE			PART NO: 产品编号:	HDGC2544HF-XP		
X.XX	±0.30	X.XX°	±2°	CHECK: 校对:	WANG			DATE	SCALE	UNIT	CODE NUMBER
X.XXX	±0.10	X.XXX°	±1°	DRAW: 绘图:	WANG			2019-03-10	5:1	mm	A008

修订 REV	标记 MARK	修改摘要 REVISION DESCRIPTION	签名 SIGNATURE	日期 DATE
AO		NEW RELEASE	WANG	2019-03-10

Ordering Information:

HDGC2541HG-XP - $\frac{**}{1}$ - $\frac{**}{2}$ - $\frac{**}{3}$

1.Part No.

2.Wire Range and Material:

2-22 AWG OD:1.40mm Max(UL94-V2)

4-24 AWG OD:1.40mm Max(UL94-V2)

6-26 AWG OD:1.20mm Max(UL94-V2)

8-28 AWG OD:1.20mm Max(UL94-V2)

3.Plating Code:

(Blank)-Phosphor bronze/Tin over Nickel,Ni:30~50u"(0.76~1.27um)

GP-Phosphor bronze/Gold over Nickel,

Au:1u"(0.0254um) MIN,Ni:30~50u"(0.76~1.27um)

(Optional Gold plating available but MOQ requested)

G15-Phosphor bronze/Gold over Nickel,

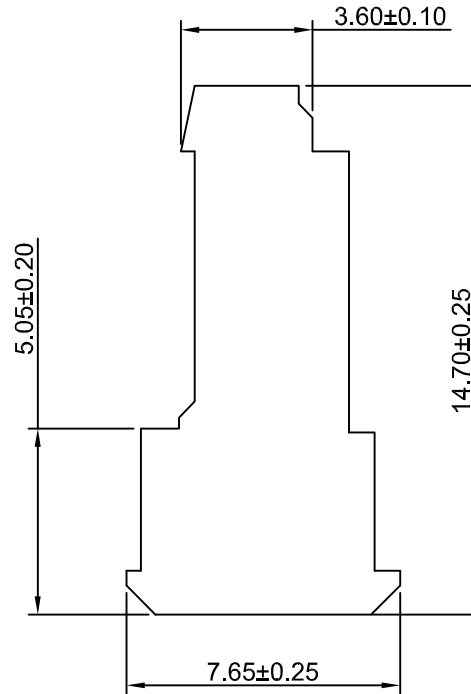
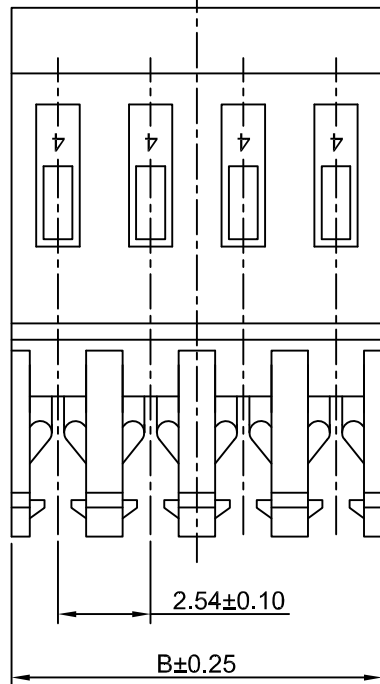
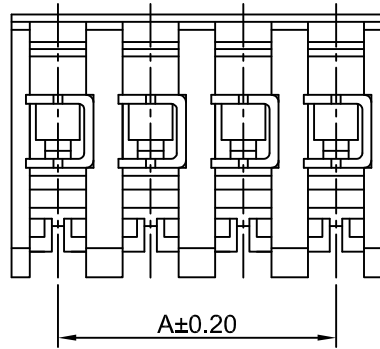
Au:15u"(0.38um) MIN,Ni:30~50u"(0.76~1.27um)

(Optional Gold plating available but MOQ requested)

G30-Phosphor bronze/Gold over Nickel,

Au:30u"(0.76um) MIN,Ni:30~50u"(0.76~1.27um)

(Optional Gold plating available but MOQ requested)



SPECIFICATIONS:

Current Rating: 3A AC,DC

Voltage Rating: 250V AC,DC

Temperature Range:-25°C~+85°C

Contact Resistance: 20mΩ Max.

Insulation Resistance: 1000MΩ Min.

Withstanding Voltage: 1500V AC/minute

Housing Material: Nylon 66,UL94V-2 or UL94V-0(White)

Terminal Material: Phosphor bronze/Tin over Nickel

Ordering Information & Dimensions

Circuits	Dimensions(mm)		Circuits	Dimensions(mm)	
	A	B		A	B
2P	2.54	5.08	10P	22.86	25.40
3P	5.08	7.62	11P	25.40	27.94
4P	7.62	10.16	12P	27.94	30.48
5P	10.16	12.70	13P	30.48	33.02
6P	12.70	15.24	14P	33.02	35.56
7P	15.24	17.78	15P	35.56	38.10
8P	17.78	20.32	16P	38.10	40.64
9P	20.32	22.86	17P	40.64	43.18



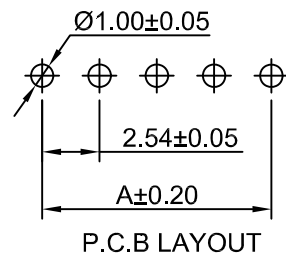
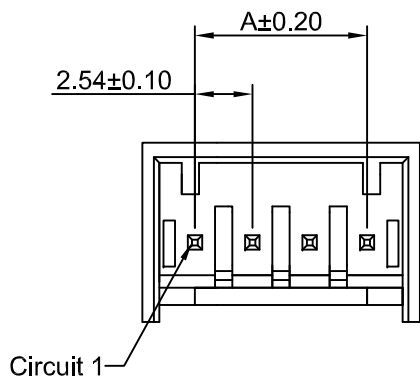
深圳市华德共创科技有限公司

Shenzhen Huade co-create Technology Co.,LTD

TEL : 0755-27129737 FAX : 0755-29940187

-TOLERANCES- OTHERWISE SPECIFIED 公差参数表				TITLE: 产品名称: 2.54mm IDC Closed End IDC Connector	
X.X	±0.30	X.X°	±3°	APPD: 核准:	XIE
X.XX	±0.30	X.XX°	±2°	CHECK: 校对:	WANG
X.XXX	±0.10	X.XXX°	±1°	DRAW: 绘图:	WANG
PART NO: 产品编号:		HDGC2544HG-XP			
DATE	SCALE	UNIT	CODE NUMBER		
2019-03-10	5:1	mm	A008		

修订 REV	标记 MARK	修改摘要 REVISION DESCRIPTION	签名 SIGNATURE	日期 DATE
AO		NEW RELEASE	WANG	2017-04-10



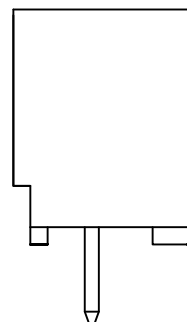
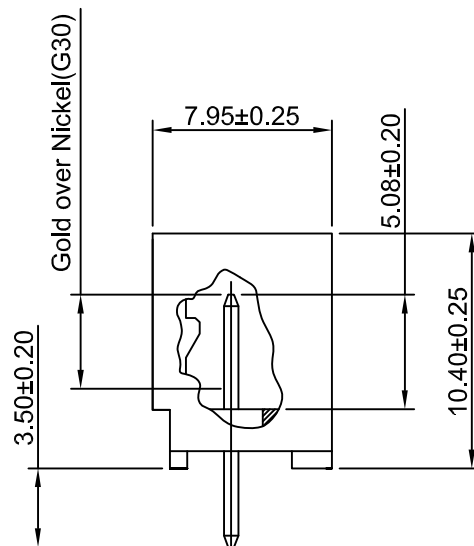
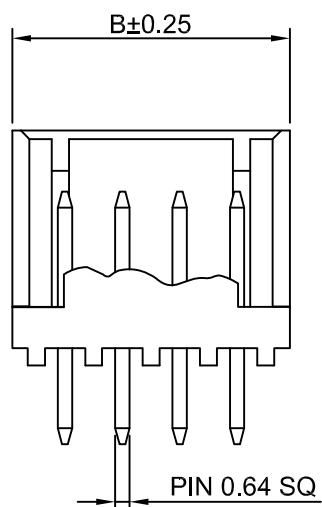
Ordering Information:
HDGC2541WV-XP - **
 1 2

- 1.Part No.
 2.Finish:
(Blank):Brass/Tin over Nickel
G:Brass/Gold over Nickel(1u")
G30:Brass/Gold over Nickel(30u")

SPECIFICATIONS:
 Current Rating: 3A AC,DC
 Voltage Rating: 250V AC,DC
 Temperature Range:-25°C~+85°C
 Contact Resistance: 20mΩ Max.
 Insulation Resistance: 1000MΩ Min.
 Withstanding Voltage: 1500V AC/minute
 Material: PBT, UL 94V-0 (Black)
 Pin Material:Brass/Tin over Nickel

Ordering Information & Dimensions

Circuits	Dimensions(mm)		Circuits	Dimensions(mm)	
	A	B		A	B
2P	2.54	7.21	14P	33.02	37.69
3P	5.08	9.75	15P	35.56	40.23
4P	7.62	12.29	16P	38.10	42.77
5P	10.16	14.83	17P	40.64	45.31
6P	12.70	17.37	18P	43.18	47.85
7P	15.24	19.91	19P	45.72	50.39
8P	17.78	22.45	20P	48.26	52.93
9P	20.32	24.99	21P	50.80	55.47
10P	22.86	27.53	22P	53.34	58.01
11P	25.40	30.07	23P	55.88	60.55
12P	27.94	32.61	24P	58.42	63.09
13P	30.48	35.15			

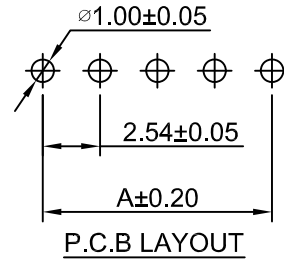
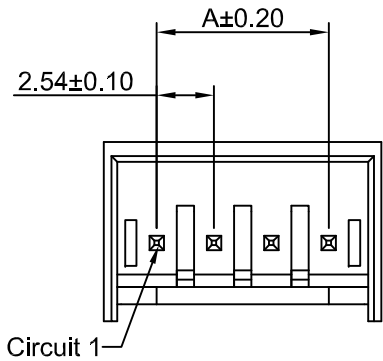


深圳市华德共创科技有限公司

Shenzhen Huade co-create Technology Co.,LTD
 TEL : 0755-27129737 FAX : 0755-29940187

-TOLERANCES- UNLESS OTHERWISE SPECIFIED 公差参数表						TITLE: 2.54mm IDC 产品名称: 180° Wafer			
X.X	±0.30	X.X°	±3°	APPD: 核准:	XIE	PART NO: 产品编号: HDGC2544WV-XP			
X.XX	±0.30	X.XX°	±2°	CHECK: 校对:	WANG	DATE	SCALE	UNIT	CODE NUMBER
X.XXX	±0.10	X.XXX°	±1°	DRAW: 绘图:	WANG	2017-04-10	3:1	mm	A008

修订 REV	标记 MARK	修改摘要 REVISION DESCRIPTION	签名 SIGNATURE	日期 DATE
AO		NEW RELEASE	WANG	2017-04-10



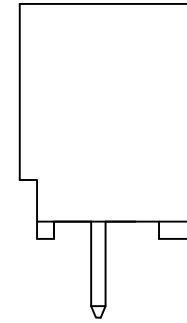
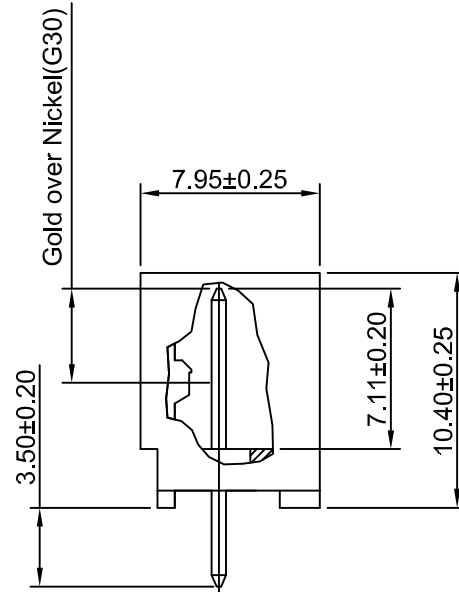
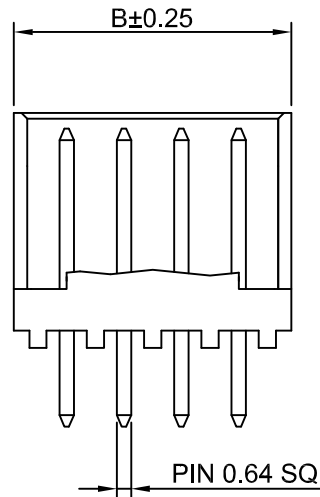
Ordering Information:
HDGC2541WVA-XP - **
1 2

- 1.Part No.
2.Finish:
(Blank):Brass/Tin over Nickel
G:Brass/Gold over Nickel(1u")
G30:Brass/Gold over Nickel(30u")

SPECIFICATIONS:
Current Rating: 3A AC,DC
Voltage Rating: 250V AC,DC
Temperature Range:-25°C~+85°C
Contact Resistance: 20mΩ Max.
Insulation Resistance: 1000MΩ Min.
Withstanding Voltage: 1500V AC/minute
Material: PBT, UL 94V-0 (Black)
Pin Material:Brass/Tin over Nickel

Ordering Information & Dimensions

Circuits	Dimensions(mm)		Circuits	Dimensions(mm)	
	A	B		A	B
2P	2.54	7.21	14P	33.02	37.69
3P	5.08	9.75	15P	35.56	40.23
4P	7.62	12.29	16P	38.10	42.77
5P	10.16	14.83	17P	40.64	45.31
6P	12.70	17.37	18P	43.18	47.85
7P	15.24	19.91	19P	45.72	50.39
8P	17.78	22.45	20P	48.26	52.93
9P	20.32	24.99	21P	50.80	55.47
10P	22.86	27.53	22P	53.34	58.01
11P	25.40	30.07	23P	55.88	60.55
12P	27.94	32.61	24P	58.42	63.09
13P	30.48	35.15			

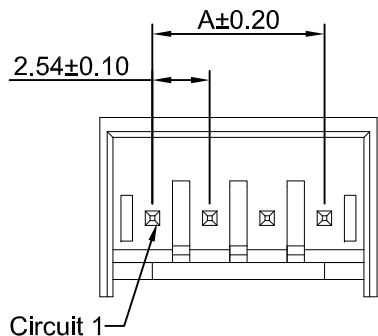


深圳市华德共创科技有限公司

Shenzhen Huade co-create Technology Co.,LTD
TEL : 0755-27129737 FAX : 0755-29940187

-TOLERANCES- UNLESS OTHERWISE SPECIFIED 公差参数表				 		TITLE: 2.54mm IDC 产品名称: 180° Wafer			
X.X	±0.30	X.X°	±3°	APPD: 核准:	XIE	PART NO: 产品编号: HDGC2544WVA-XP			
X.XX	±0.30	X.XX°	±2°	CHECK: 校对:	WANG	DATE	SCALE	UNIT	CODE NUMBER
X.XXX	±0.10	X.XXX°	±1°	DRAW: 绘图:	WANG	2017-04-10	3:1	mm	A008

修订 REV	标记 MARK	修改摘要 REVISION DESCRIPTION	签名 SIGNATURE	日期 DATE
AO		NEW RELEASE	WANG	2017-04-10



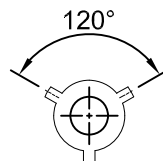
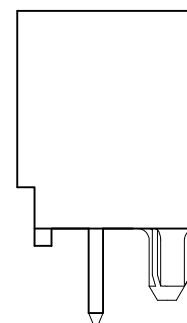
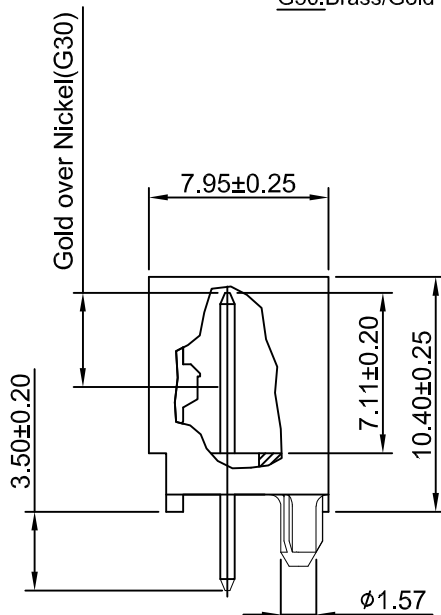
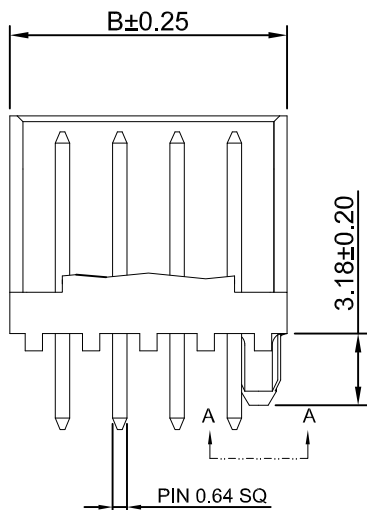
Ordering Information:
HDGC2541WVA-F-XP - **
 1 2

- 1.Part No.
 2.Finish:
 (Blank):Brass/Tin over Nickel
 G:Brass/Gold over Nickel(1u")
 G30:Brass/Gold over Nickel(30u")

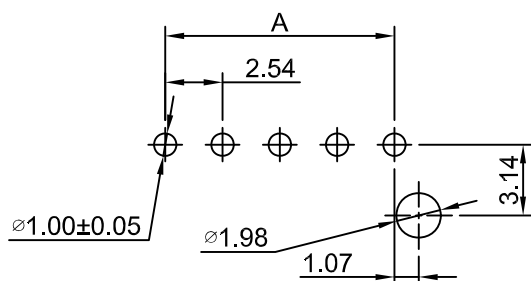
SPECIFICATIONS:
 Current Rating: 3A AC,DC
 Voltage Rating: 250V AC,DC
 Temperature Range: -25°C~+85°C
 Contact Resistance: 20mΩ Max.
 Insulation Resistance: 1000MΩ Min.
 Withstanding Voltage: 1500V AC/minute
 Material: PBT, UL 94V-0 (Black)
 Pin Material:Brass/Tin over Nickel

Ordering Information & Dimensions

Circuits	Dimensions(mm)		Circuits	Dimensions(mm)	
	A	B		A	B
2P	2.54	7.21	14P	33.02	37.69
3P	5.08	9.75	15P	35.56	40.23
4P	7.62	12.29	16P	38.10	42.77
5P	10.16	14.83	17P	40.64	45.31
6P	12.70	17.37	18P	43.18	47.85
7P	15.24	19.91	19P	45.72	50.39
8P	17.78	22.45	20P	48.26	52.93
9P	20.32	24.99	21P	50.80	55.47
10P	22.86	27.53	22P	53.34	58.01
11P	25.40	30.07	23P	55.88	60.55
12P	27.94	32.61	24P	58.42	63.09
13P	30.48	35.15			



VIEW A-A



P.C.B LAYOUT



深圳市华德共创科技有限公司
 Shenzhen Huade co-create Technology Co.,LTD
 TEL : 0755-27129737 FAX : 0755-29940187

-TOLERANCES- UNLESS OTHERWISE SPECIFIED 公差参数表				 	TITLE: 2.54mm IDC 产品名称: 180° Wafer			
X.X	±0.30	X.X°	±3°	APPD: 核准:	XIE			
X.XX	±0.30	X.XX°	±2°	CHECK: 校对:	WANG			
X.XXX	±0.10	X.XXX°	±1°	DRAW: 绘图:	WANG			
PART NO: 产品编号:					HDGC2544WVA-F-XP			
DATE		SCALE	UNIT	CODE NUMBER				
2017-04-10		3:1	mm	A008				

修订 REV	标记 MARK	修改摘要 REVISION DESCRIPTION	签名 SIGNATURE	日期 DATE
AO		NEW RELEASE	WANG	2017-04-10

Ordering Information:

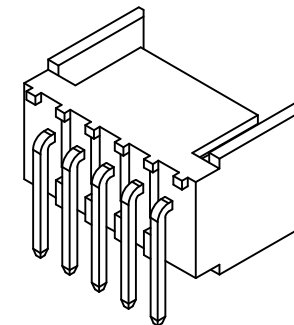
HDGC2541WR-XP - *
1 2

1.Part No.

2.Finish:

(Blank):Brass/Tin over Nickel

G:Brass/Gold over Nickel



SPECIFICATIONS:

Current Rating: 3A AC,DC

Voltage Rating: 250V AC,DC

Temperature Range: -25°C~+85°C

Contact Resistance: 20mΩ Max.

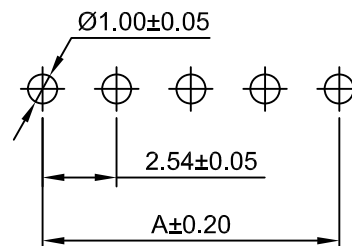
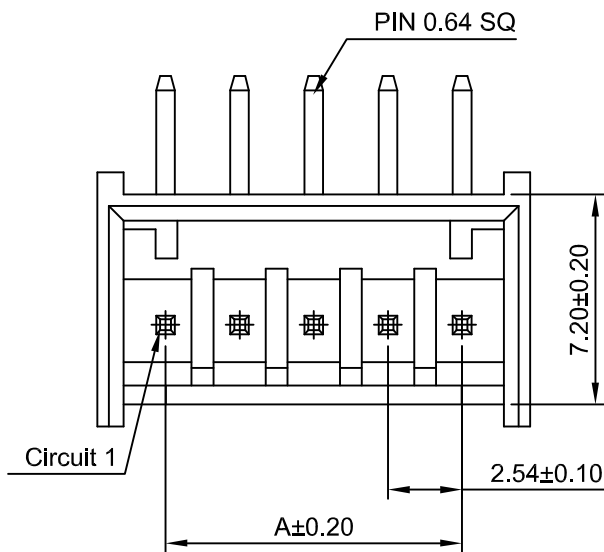
Insulation Resistance: 1000MΩ Min.

Withstanding Voltage: 1500V AC/minute

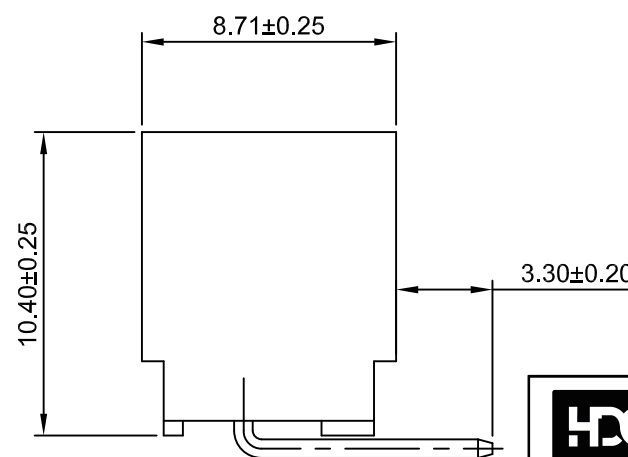
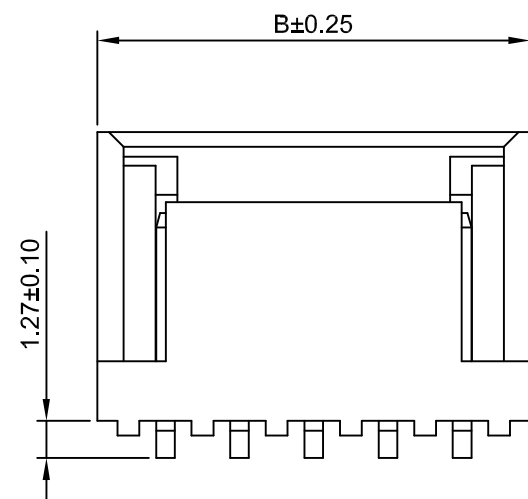
Material: PBT, UL 94V-0(Black)

Pin Material:Brass/Tin over Nickel

Ordering Information & Dimensions



P.C.B LAYOUT



Circuits	Dimensions(mm)		Circuits	Dimensions(mm)	
	A	B		A	B
2P	2.54	7.62	14P	33.02	38.10
3P	5.08	10.16	15P	35.56	40.64
4P	7.62	12.70	16P	38.10	43.18
5P	10.16	15.24	17P	40.64	45.72
6P	12.70	17.78	18P	43.18	48.26
7P	15.24	20.32	19P	45.72	50.80
8P	17.78	22.86	20P	48.26	53.34
9P	20.32	25.40	21P	50.80	55.88
10P	22.86	27.94	22P	53.34	58.42
11P	25.40	30.48	23P	55.88	60.96
12P	27.94	33.02	24P	58.42	63.50
13P	30.48	35.56			



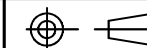
深圳市华德共创科技有限公司

Shenzhen Huade co-create Technology Co.,LTD

TEL : 0755-27129737

FAX : 0755-29940187

-TOLERANCES-
UNLESS OTHERWISE SPECIFIED
公差参数表



TITLE: 2.54mm IDC
产品名称: 90° Wafer

X.X ±0.30 X.X° ±3°

APPD: XIE
核准:

PART NO: HDGC2544WR-XP
产品编号:

X.XX ±0.30 X.XX° ±2°

CHECK: WANG
校对:

DATE SCALE UNIT CODE NUMBER

X.XXX ±0.10 X.XXX° ±1°

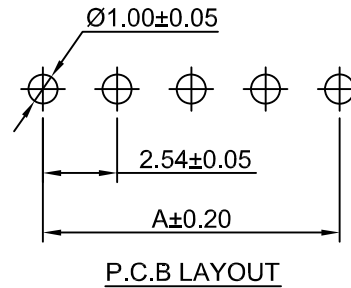
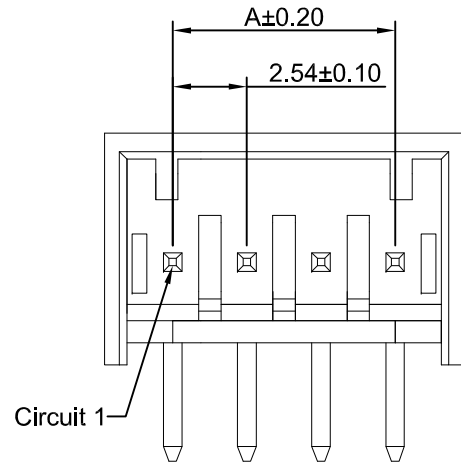
DRAW: WANG
绘图:

2017-04-10 4:1 mm A008

修订 REV	标记 MARK	修改摘要 REVISION DESCRIPTION	签名 SIGNATURE	日期 DATE
AO		NEW RELEASE	WANG	2017-04-10

Ordering Information:
HDGC2541WRA-XP - *
 1 2

- Part No.
- Finish:
 (Blank): Brass/Tin over Nickel
 G: Brass/Gold over Nickel

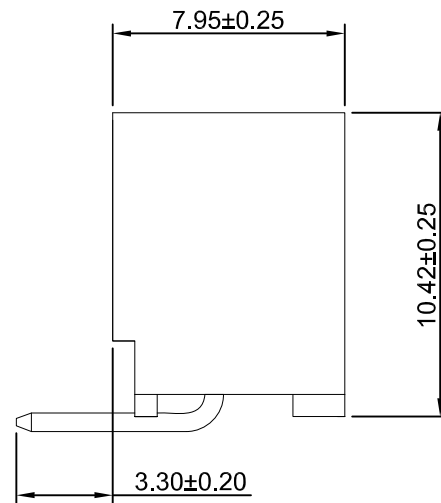
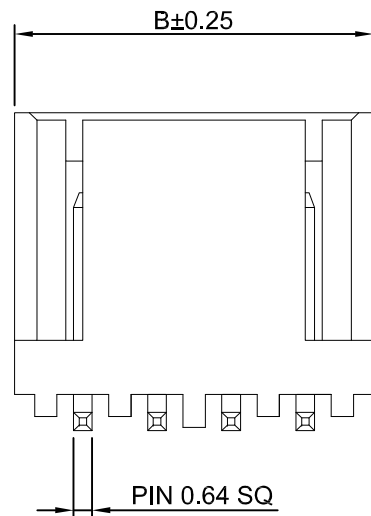


SPECIFICATIONS:

Current Rating: 3A AC,DC
 Voltage Rating: 250V AC,DC
 Temperature Range: -25°C~+85°C
 Contact Resistance: 20mΩ Max.
 Insulation Resistance: 1000MΩ Min.
 Withstanding Voltage: 1500V AC/minute
 Material: PBT, UL 94V-0 (Black)
 Pin Material: Brass/Tin over Nickel

Ordering Information & Dimensions

Circuits	Dimensions(mm)		Circuits	Dimensions(mm)	
	A	B		A	B
2P	2.54	7.21	14P	33.02	37.69
3P	5.08	9.75	15P	35.56	40.23
4P	7.62	12.29	16P	38.10	42.77
5P	10.16	14.83	17P	40.64	45.31
6P	12.70	17.37	18P	43.18	47.85
7P	15.24	19.91	19P	45.72	50.39
8P	17.78	22.45	20P	48.26	52.93
9P	20.32	24.99	21P	50.80	55.47
10P	22.86	27.53	22P	53.34	58.01
11P	25.40	30.07	23P	55.88	60.55
12P	27.94	32.61	24P	58.42	63.09
13P	30.48	35.15			



HDGC 深圳市华德共创科技有限公司
 Shenzhen Huade co-create Technology Co.,LTD
 TEL : 0755-27129737 FAX : 0755-29940187

-TOLERANCES- UNLESS OTHERWISE SPECIFIED 公差参数表				TITLE: 产品名称: 2.54mm IDC 90° Wafer	
X.X	±0.30	X.X°	±3°	APPD: 核准:	XIE
X.XX	±0.30	X.XX°	±2°	CHECK: 校对:	WANG
X.XXX	±0.10	X.XXX°	±1°	DRAW: 绘图:	WANG
PART NO: 产品编号:		HDGC2544WRA-XP			
DATE	SCALE	UNIT	CODE NUMBER		
2017-04-10	4:1	mm	A008		

修订 REV	标记 MARK	修改摘要 REVISION DESCRIPTION	签名 SIGNATURE	日期 DATE
AO		NEW RELEASE	WANG	2017-04-10

Ordering Information:
HDGC2541WRB-XP - *
 1 2

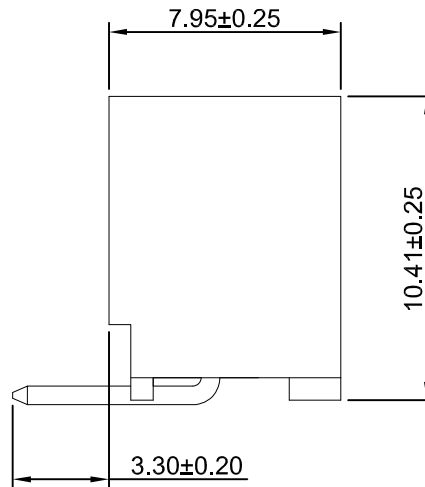
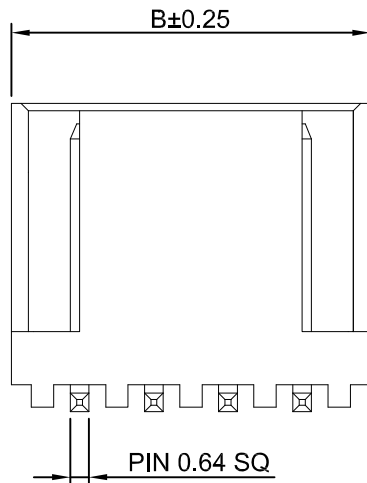
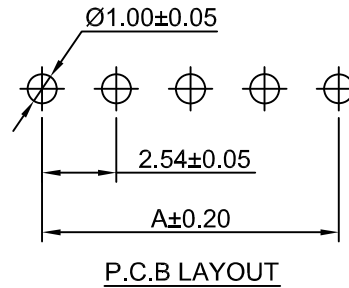
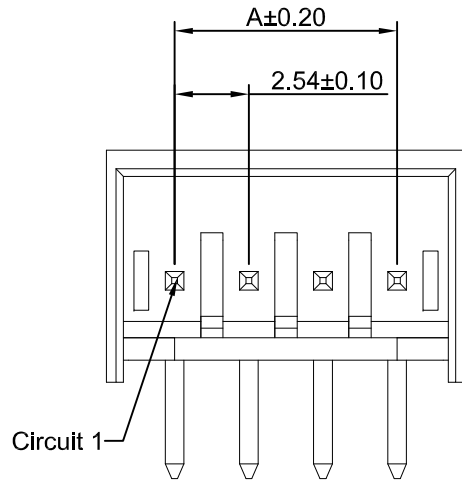
1.Part No.
 2.Finish:
(Blank):Brass/Tin over Nickel
G:Brass/Gold over Nickel

SPECIFICATIONS:

Current Rating: 3A AC,DC
 Voltage Rating: 250V AC,DC
 Temperature Range: -25°C~+85°C
 Contact Resistance: 20mΩ Max.
 Insulation Resistance: 1000MΩ Min.
 Withstanding Voltage: 1500V AC/minute
 Material: PBT, UL 94V-0 (Black)
 Pin Material:Brass/Tin over Nickel

Ordering Information & Dimensions

Circuits	Dimensions(mm)		Circuits	Dimensions(mm)	
	A	B		A	B
2P	2.54	7.21	14P	33.02	37.69
3P	5.08	9.75	15P	35.56	40.23
4P	7.62	12.29	16P	38.10	42.77
5P	10.16	14.83	17P	40.64	45.31
6P	12.70	17.37	18P	43.18	47.85
7P	15.24	19.91	19P	45.72	50.39
8P	17.78	22.45	20P	48.26	52.93
9P	20.32	24.99	21P	50.80	55.47
10P	22.86	27.53	22P	53.34	58.01
11P	25.40	30.07	23P	55.88	60.55
12P	27.94	32.61	24P	58.42	63.09
13P	30.48	35.15			



深圳市华德共创科技有限公司

Shenzhen Huade co-create Technology Co.,LTD
 TEL : 0755-27129737 FAX : 0755-29940187

-TOLERANCES- UNLESS OTHERWISE SPECIFIED 公差参数表				TITLE: 产品名称 : 2.54mm IDC 90° Wafer	
X.X	±0.30	X.X°	±3°	APPD: 核准 :	XIE
X.XX	±0.30	X.XX°	±2°	CHECK: 校对 :	WANG
X.XXX	±0.10	X.XXX°	±1°	DRAW: 绘图 :	WANG
PART NO: 产品编号 :		HDGC2544WRB-XP			
DATE	SCALE	UNIT	CODE NUMBER		
2017-04-10	4:1	mm	A008		