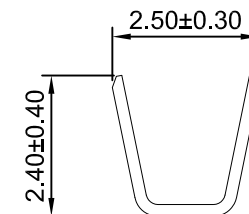
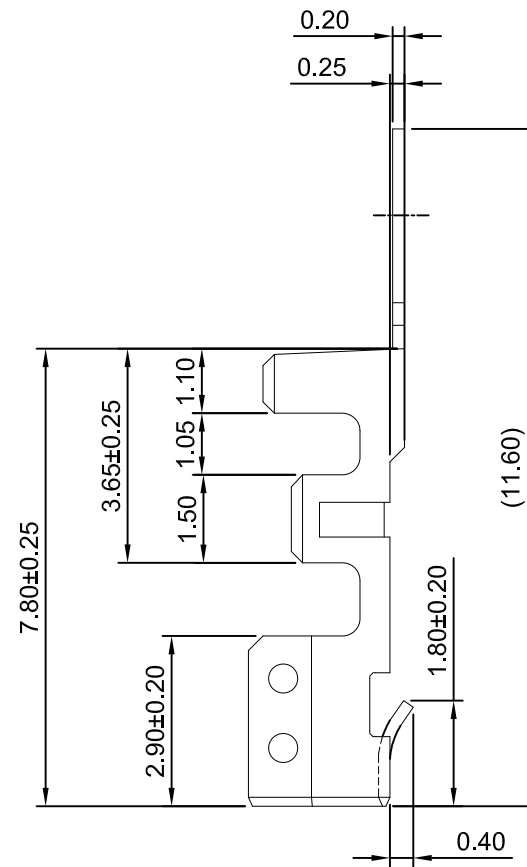
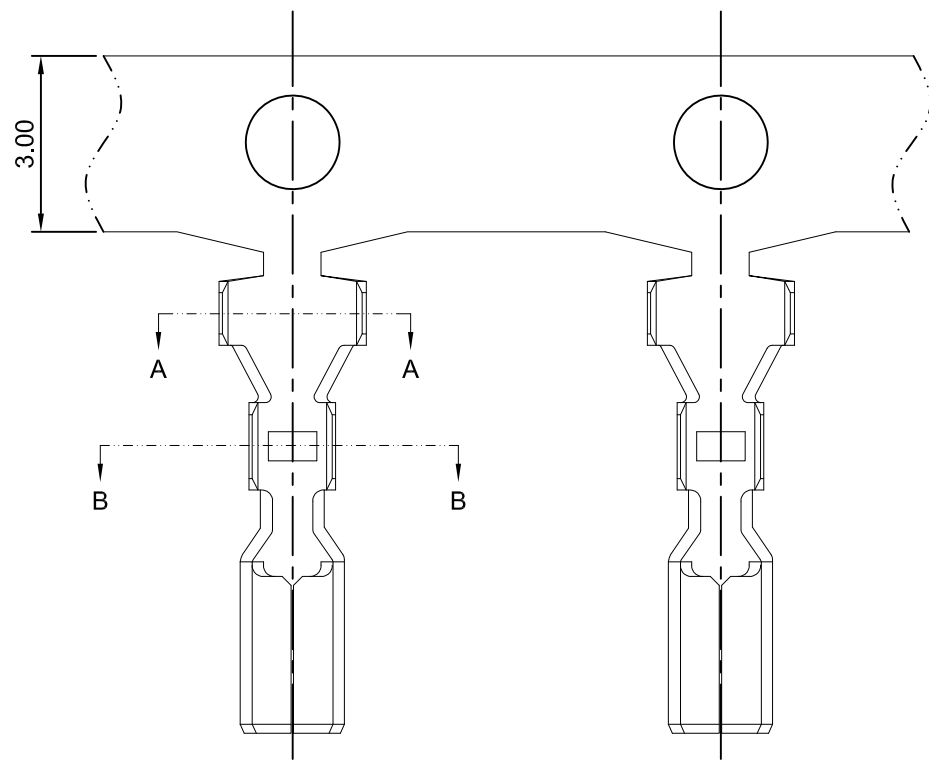
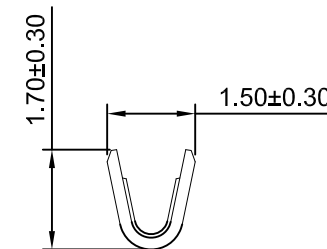


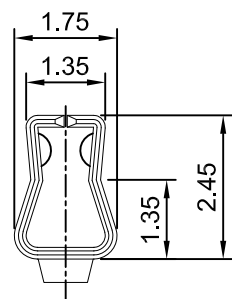
修订 REV	标记 MARK	修改摘要 REVISION DESCRIPTION	签名 SIGNATURE	日期 DATE
AO		NEW RELEASE	WANG	2018-06-10



SEC:B-B



SEC:A-A



Ordering information & Specifications

Unit:mm

Part No	Wire Range	Insulation O.D.	Material	Finish	Qty/reel
HDGC2509-TP-A	AWG#22-#28	1.90mm(max)	Phosphor Bronze	Tin over Nickel	7,000 PCS
HDGC2509-GP-A	AWG#22-#28	1.90mm(max)	Phosphor Bronze	Gold over Nickel	7,000 PCS

Optional Gold plating available but MOQ requested



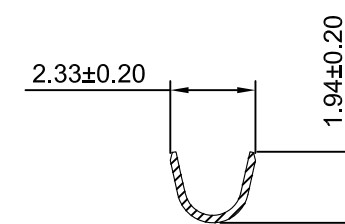
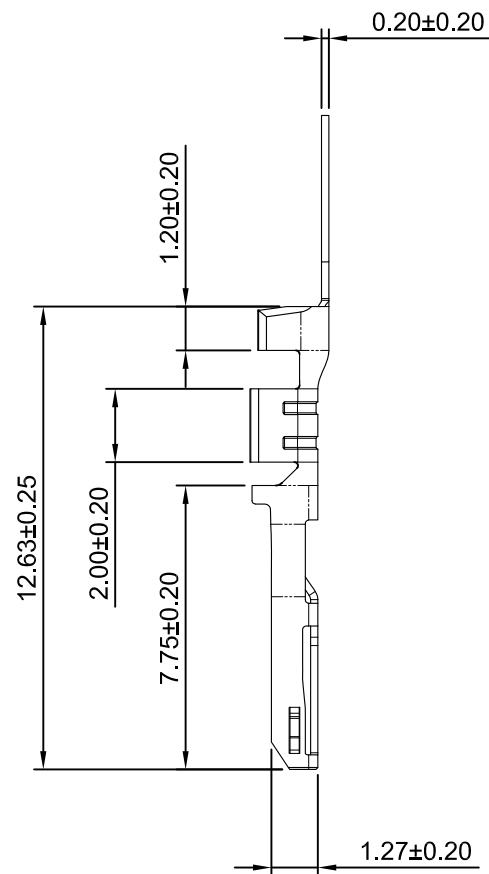
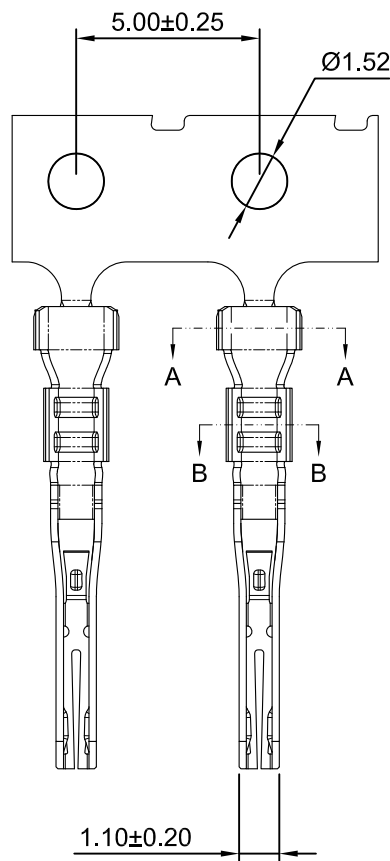
深圳市华德共创科技有限公司

Shenzhen Huade co-create Technology Co.,LTD

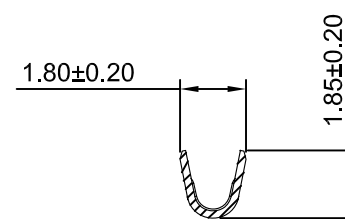
TEL : 0755-27129737 FAX : 0755-29940187

-TOLERANCES- UNLESS OTHERWISE SPECIFIED 公差参数表						TITLE: 2.50mm Pitch 产品名称: Crimp Terminal			
X.X	±0.30	X.X°	±3°	APPD: 核准:	XIE	PART NO: 产品编号: HDGC2509-T-A			
X.XX	±0.30	X.XX°	±2°	CHECK: 校对:	WANG	DATE	SCALE	UNIT	CODE NUMBER
X.XXX	±0.10	X.XXX°	±1°	DRAW: 绘图:	WANG	2018-06-10	8:1	mm	A008

修订 REV	标记 MARK	修改摘要 REVISION DESCRIPTION	签名 SIGNATURE	日期 DATE
AO		NEW RELEASE	WANG	2019-07-08



SEC:A-A



SEC:B-B

Ordering information & Specifications

Part No	Wire Range	Insultion O.D.	Material	Finish	Qty/reel
HDGC2509-TP-B	AWG#20-#22	1.60mm(max)	Phosphor Bronze	Tin over Nickel	15,000 PCS
HDGC2509-GP-B	AWG#20-#22	1.60mm(max)	Phosphor Bronze	Gold over Nickel	15,000 PCS

Unit:mm



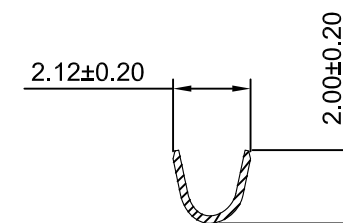
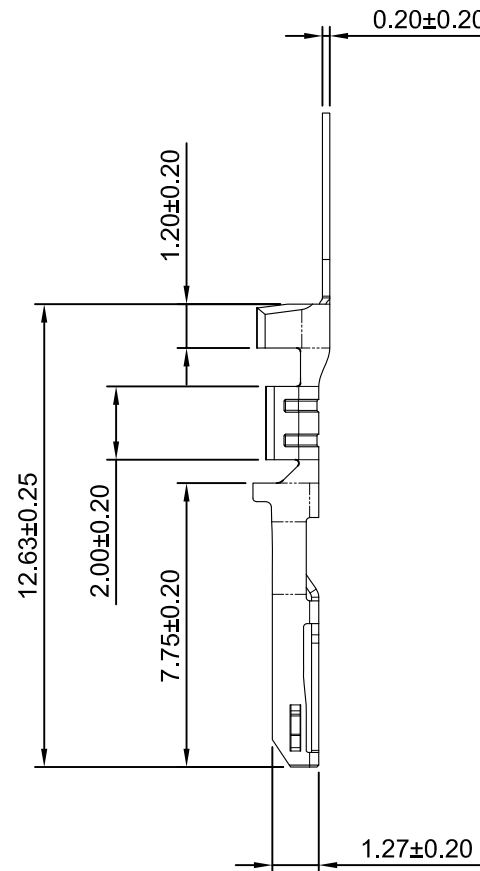
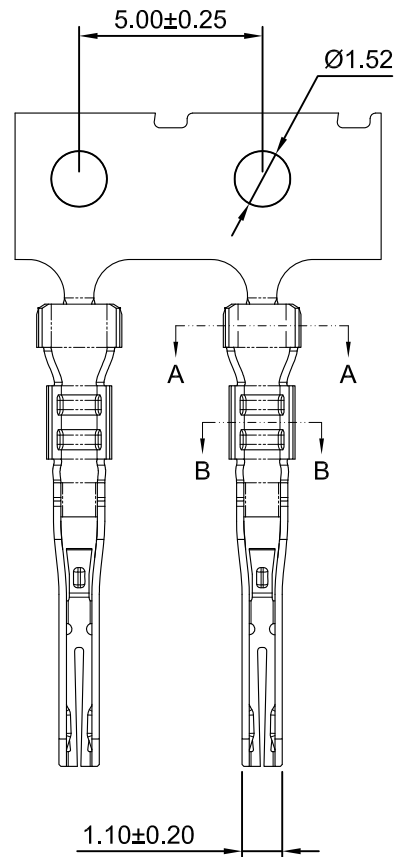
深圳市华德共创科技有限公司

Shenzhen Huade co-create Technology Co.,LTD

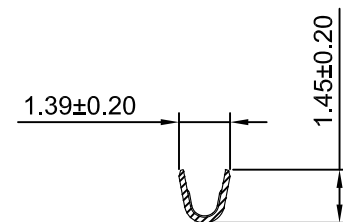
TEL : 0755-27129737 FAX : 0755-29940187

-TOLERANCES- UNLESS OTHERWISE SPECIFIED 公差参数表				TITLE: 产品名称: 2.50mm Pitch Crimp Terminal	
X.X	±0.30	X.X°	±3°	APPD: 核准: XIE	PART NO: 产品编号: HDGC2509-T-B
X.XX	±0.30	X.XX°	±2°	CHECK: 校对: WANG	DATE
X.XXX	±0.10	X.XXX°	±1°	DRAW: 绘图: WANG	SCALE
					UNIT
					CODE NUMBER
					A008

修订 REV	标记 MARK	修改摘要 REVISION DESCRIPTION	签名 SIGNATURE	日期 DATE
AO		NEW RELEASE	WANG	2019-07-08



SEC:A-A



SEC:B-B

Ordering information & Specifications

Unit:mm

Part No	Wire Range	Insultion O.D.	Material	Finish	Qty/reel
HDGC2509-TP-B-L	AWG#24-#26	1.30mm(max)	Phosphor Bronze	Tin over Nickel	15,000 PCS
HDGC2509-GP-B-L	AWG#24-#26	1.30mm(max)	Phosphor Bronze	Gold over Nickel	15,000 PCS



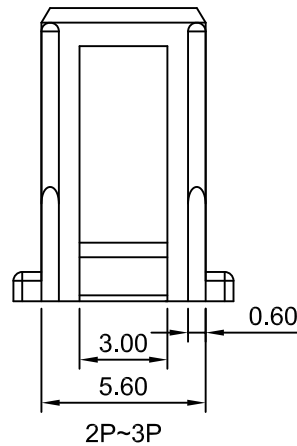
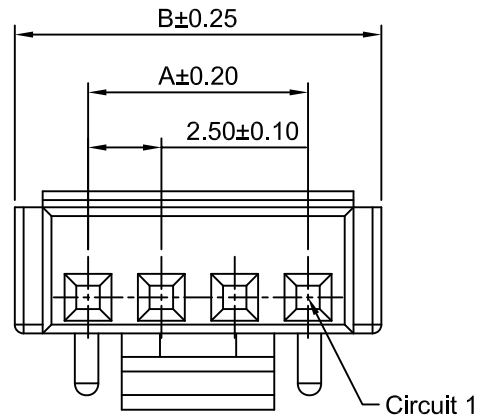
深圳市华德共创科技有限公司

Shenzhen Huade co-create Technology Co.,LTD

TEL : 0755-27129737 FAX : 0755-29940187

-TOLERANCES- UNLESS OTHERWISE SPECIFIED 公差参数表						TITLE: 2.50mm Pitch 产品名称: Crimp Terminal			
X.X	±0.30	X.X°	±3°	APPD: 核准:	XIE	PART NO: 产品编号: HDGC2509-T-B-L			
X.XX	±0.30	X.XX°	±2°	CHECK: 校对:	WANG	DATE	SCALE	UNIT	CODE NUMBER
X.XXX	±0.10	X.XXX°	±1°	DRAW: 绘图:	WANG	2019-07-08	5:1	mm	A008

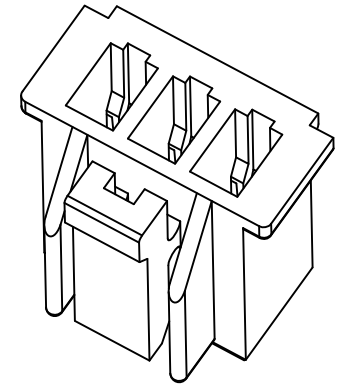
修订 REV	标记 MARK	修改摘要 REVISION DESCRIPTION	签名 SIGNATURE	日期 DATE
AO		NEW RELEASE	WANG	2017-10-25



**Ordering Information:**

HDGC2509HA-XP - \*\*\* - \*\*  
1 2 3

- Part No.
- Material:  
(blank):Nylon 66,UL94V-0  
GWT:Nylon 66,UL94V-0,GWT 750°C
- Color:  
(Blank):Natural  
RD:Red  
YL:Yellow  
BL:Blue

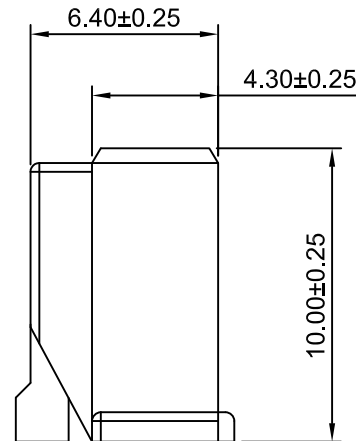
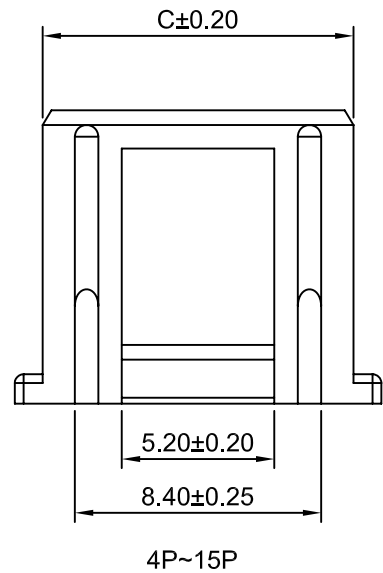


**SPECIFICATIONS:**

Current Rating: 3A AC,DC  
Voltage Rating: 250V AC,DC  
Temperature Range: -25°C ~ +85°C  
Contact Resistance: 20mΩ Max  
Insulation Resistance: 1000MΩ Min  
Withstanding Voltage:1000VAC/minute  
Material: Nylon 66,UL94V-0(Natural)

**Ordering Information & Dimensions**

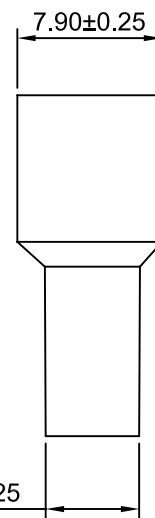
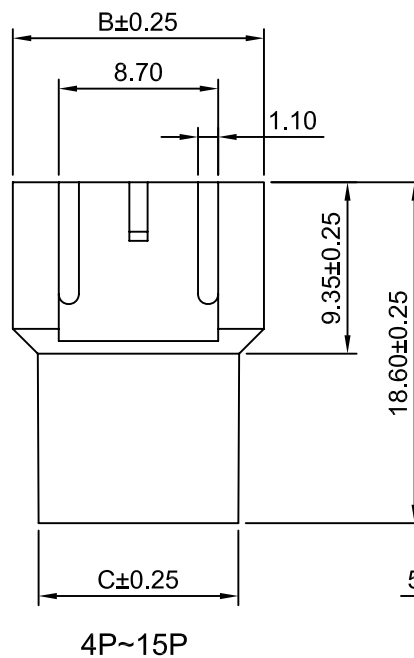
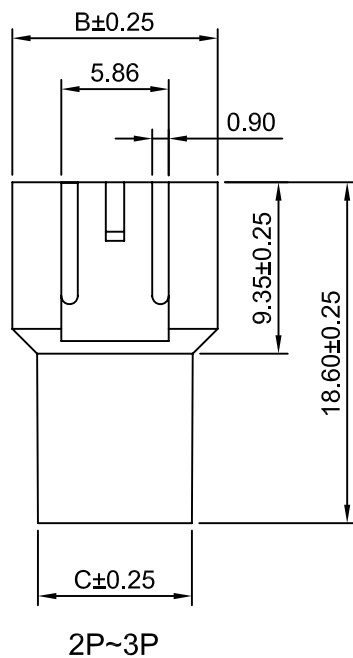
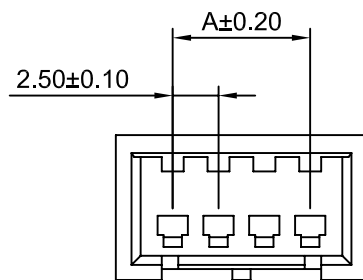
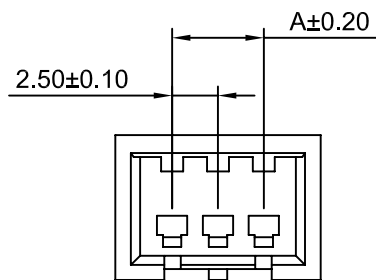
Circuits	Dimensions(mm)			Circuits	Dimensions(mm)		
	A	B	C		A	B	C
2P	2.50	7.50	5.60	9P	20.00	25.00	23.10
3P	5.00	10.00	8.10	10P	22.50	27.50	25.60
4P	7.50	12.50	10.60	11P	25.00	30.00	28.10
5P	10.00	15.00	13.10	12P	27.50	32.50	30.60
6P	12.50	17.50	15.60	13P	30.00	35.00	33.10
7P	15.00	20.00	18.10	14P	32.50	37.50	35.60
8P	17.50	22.50	20.60	15P	35.00	40.00	38.10



**HDGC** 深圳市华德共创科技有限公司  
Shenzhen Huade co-create Technology Co.,LTD  
TEL : 0755-27129737 FAX : 0755-29940187

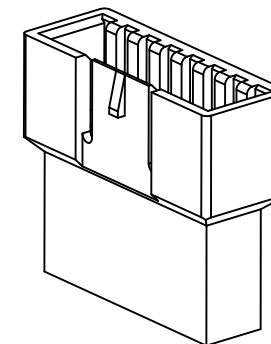
-TOLERANCES- UNLESS OTHERWISE SPECIFIED 公差参数表				TITLE: 产品名称: 2.50mm Pitch Housing				
X.X	±0.30	X.X°	±3°	APPD: 核准: XIE	PART NO: 产品编号: HDGC2509HA-XP			
X.XX	±0.30	X.XX°	±2°	CHECK: 校对: WANG	DATE	SCALE	UNIT	CODE NUMBER
X.XXX	±0.10	X.XXX°	±1°	DRAW: 绘图: WANG	2017-10-25	4:1	mm	A008

修订 REV	标记 MARK	修改摘要 REVISION DESCRIPTION	签名 SIGNATURE	日期 DATE
AO		NEW RELEASE	WANG	2015-04-25



Ordering Information:  
HDGC2509HM-XP - \*\*  
1 2

1.Part No.  
2.Color:  
(blank):White  
BK:Black



**SPECIFICATIONS:**

Current Rating: 3A AC,DC  
Voltage Rating: 250V AC,DC  
Temperature Range: -25°C ~ +85°C  
Contact Resistance: 20mΩ Max  
Insulation Resistance: 1000MΩ Min  
Withstanding Voltage:1000VAC/minute  
Material: Nylon 66,UL94V-0(White)

**Ordering Information & Dimensions**

Circuits	Dimensions(mm)			Circuits	Dimensions(mm)		
	A	B	C		A	B	C
2P	2.50	7.70	5.90	9P	20.00	26.20	23.40
3P	5.00	11.20	8.40	10P	22.50	28.70	25.90
4P	7.50	13.70	10.90	11P	25.00	31.20	28.40
5P	10.00	16.20	13.40	12P	27.50	33.70	30.90
6P	12.50	18.70	15.90	13P	30.00	36.20	33.40
7P	15.00	21.20	18.40	14P	32.50	38.70	35.90
8P	17.50	23.70	20.90	15P	35.00	41.20	38.40



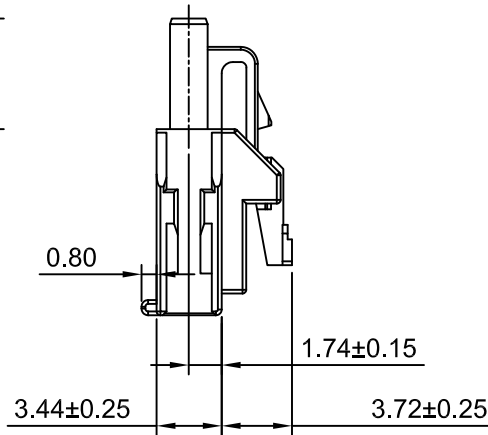
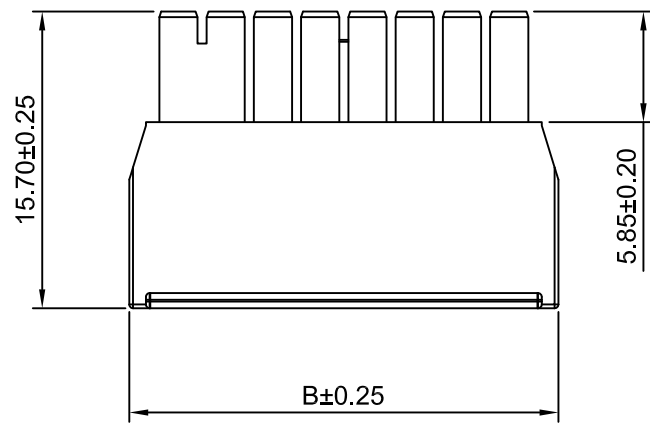
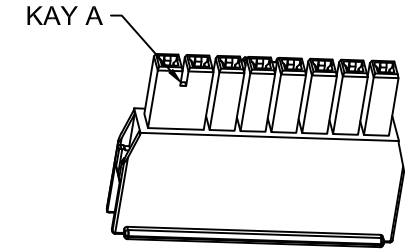
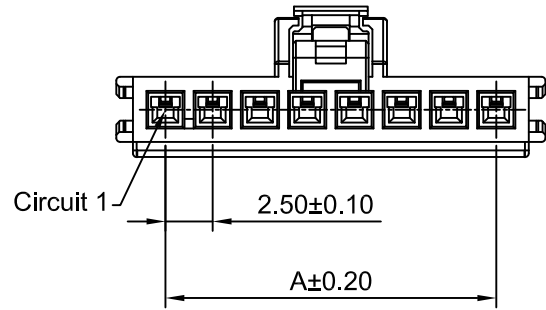
深圳市华德共创科技有限公司

Shenzhen Huade co-create Technology Co.,LTD

TEL : 0755-27129737 FAX : 0755-29940187

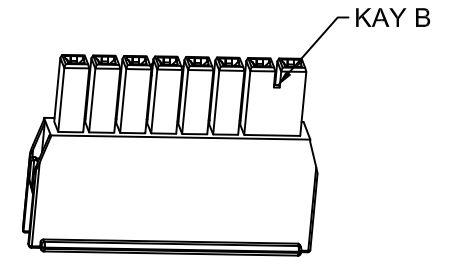
-TOLERANCES- UNLESS OTHERWISE SPECIFIED 公差参数表						TITLE: 2.50mm Pitch 产品名称: Housing			
X.X	±0.30	X.X°	±3°	APPD: 核准:	XIE	PART NO: 产品编号: HDGC2509HM-XP			
X.XX	±0.30	X.XX°	±2°	CHECK: 校对:	WANG	DATE	SCALE	UNIT	CODE NUMBER
X.XXX	±0.10	X.XXX°	±1°	DRAW: 绘图:	WANG	2015-04-25	2.5:1	mm	A008

修订 REV	标记 MARK	修改摘要 REVISION DESCRIPTION	签名 SIGNATURE	日期 DATE
AO		NEW RELEASE	WANG	2019-05-30



Ordering Information:  
HDGC2509HFA-XP - \*\*\*  
1 2

1.Part No.  
2.Color.  
(Blank):Black,KAY A  
NAT:Natural,KAY B

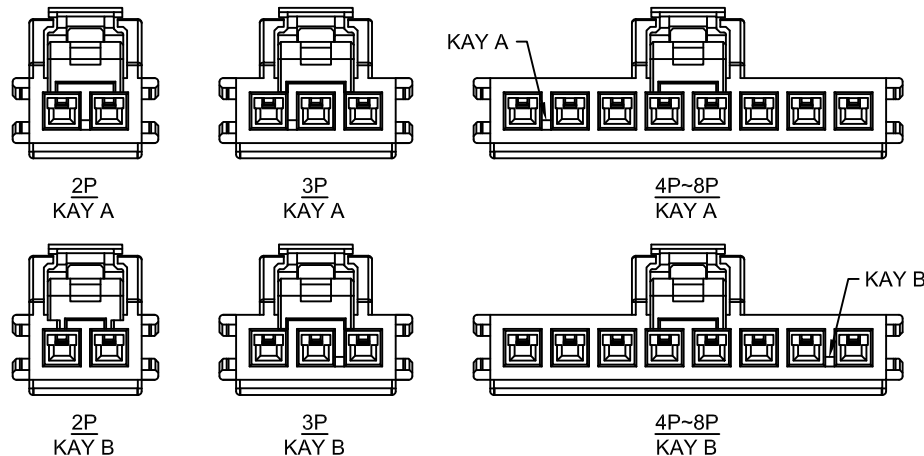


**SPECIFICATIONS:**

Current Rating: 3A AC,DC  
Voltage Rating: 250V AC,DC  
Temperature Range: -25°C ~ +85°C  
Contact Resistance: 20mΩ Max  
Insulation Resistance: 1000MΩ Min  
Withstanding Voltage:1000VAC/minute  
Material: PA4T + 30%GF,UL94V-0(Black)

**Ordering Information & Dimensions**

Circuits	Dimensions(mm)		Circuits	Dimensions(mm)	
	A	B		A	B
2P	2.50	7.70	6P	12.50	17.70
3P	5.00	10.20	7P	15.00	20.20
4P	7.50	12.70	8P	17.50	22.70
5P	10.00	15.20			



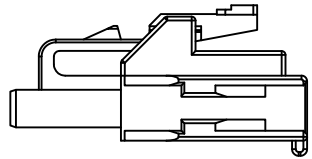
深圳市华德共创科技有限公司

Shenzhen Huade co-create Technology Co.,LTD

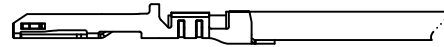
TEL : 0755-27129737 FAX : 0755-29940187

-TOLERANCES- OTHERWISE SPECIFIED 公差参数表				TITLE: 产品名称: 2.50mm Pitch Housing	
X.X	±0.30	X.X°	±3°	APPD: 核准: XIE	PART NO: 产品编号: HDGC2509HFA-XP
X.XX	±0.30	X.XX°	±2°	CHECK: 校对: WANG	DATE
X.XXX	±0.10	X.XXX°	±1°	DRAW: 绘图: WANG	SCALE
					UNIT
					CODE NUMBER
					A008

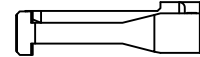
修订 REV	标记 MARK	修改摘要 REVISION DESCRIPTION	签名 SIGNATURE	日期 DATE
AO		NEW RELEASE	WANG	2019-05-30



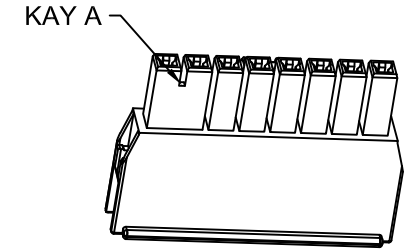
HDGC2509HFA-XP



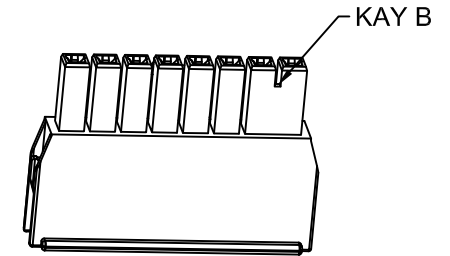
HDGC2509-T-B/HDGC2509-T-B-L



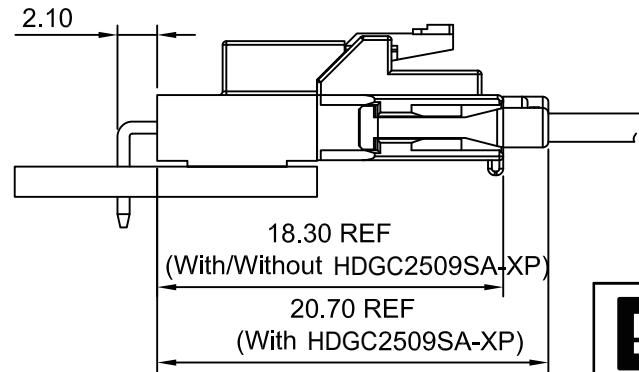
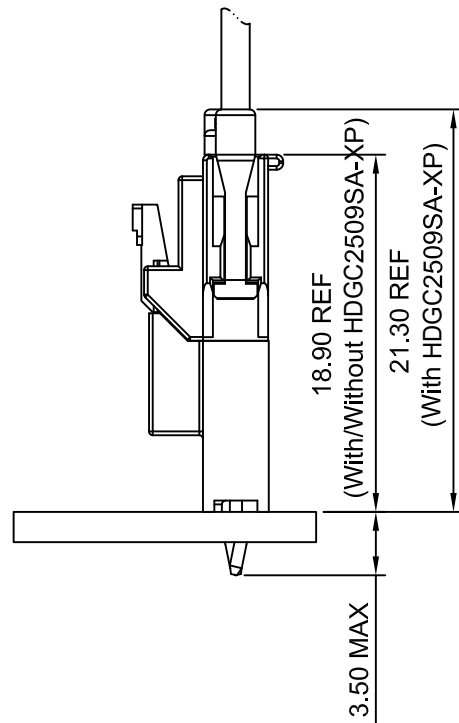
HDGC2509SA-XP



KAY A



KAY B



Ordering Information:  
HDGC2509HFA-XP - \*\*\*

- 1.Part No.
- 2.Color.
- (Blank):Black,KAY A
- NAT:Natural,KAY B

**SPECIFICATIONS:**

Current Rating: 3A AC,DC  
Voltage Rating: 250V AC,DC  
Temperature Range: -25°C ~ +85°C  
Contact Resistance: 20mΩ Max  
Insulation Resistance: 1000MΩ Min  
Withstanding Voltage:1000VAC/minute  
Material: PA4T + 30%GF,UL94V-0(Black)

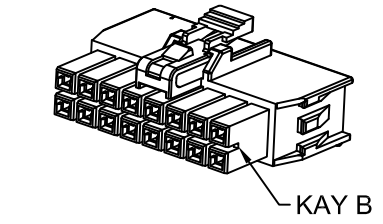
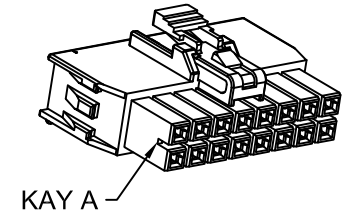
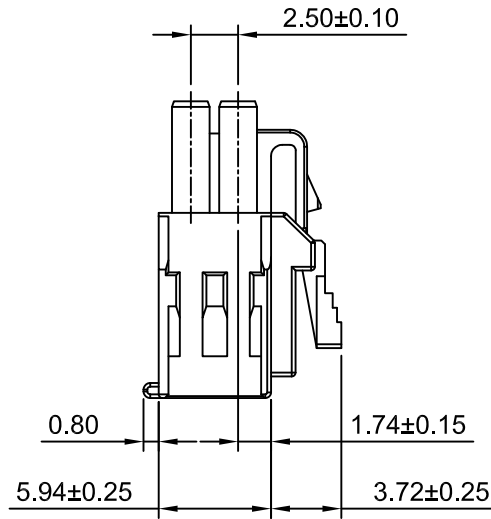
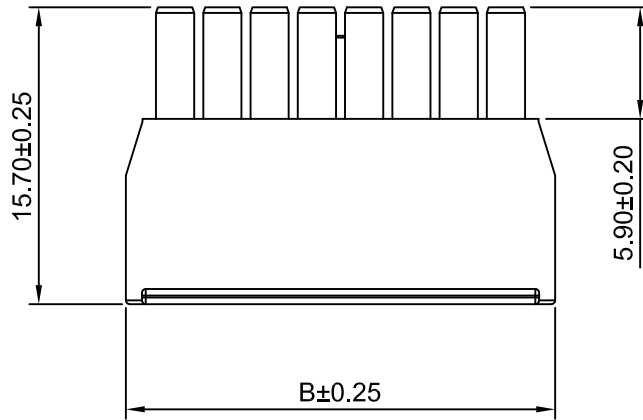
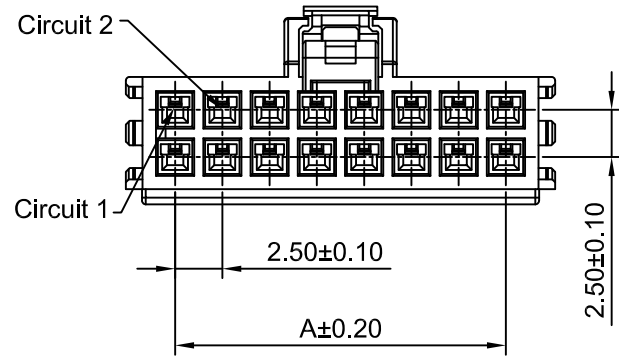


**深圳市华德共创科技有限公司**

Shenzhen Huade co-create Technology Co.,LTD  
TEL : 0755-27129737 FAX : 0755-29940187

-TOLERANCES- UNLESS OTHERWISE SPECIFIED 公差参数表				TITLE: 产品名称 : 2.50mm Pitch Housing				
X.X	±0.30	X.X°	±3°	APPD: 核准 : XIE	PART NO: 产品编号 : HDGC2509HFA-XP			
X.XX	±0.30	X.XX°	±2°	CHECK: 校对 : WANG	DATE	SCALE	UNIT	CODE NUMBER
X.XXX	±0.10	X.XXX°	±1°	DRAW: 绘图 : WANG	2019-05-30	2.5:1	mm	A008

修订 REV	标记 MARK	修改摘要 REVISION DESCRIPTION	签名 SIGNATURE	日期 DATE
AO		NEW RELEASE	WANG	2019-05-30



Ordering Information:  
HDGC2509HFA-2xXP - \*\*\*  
1 2

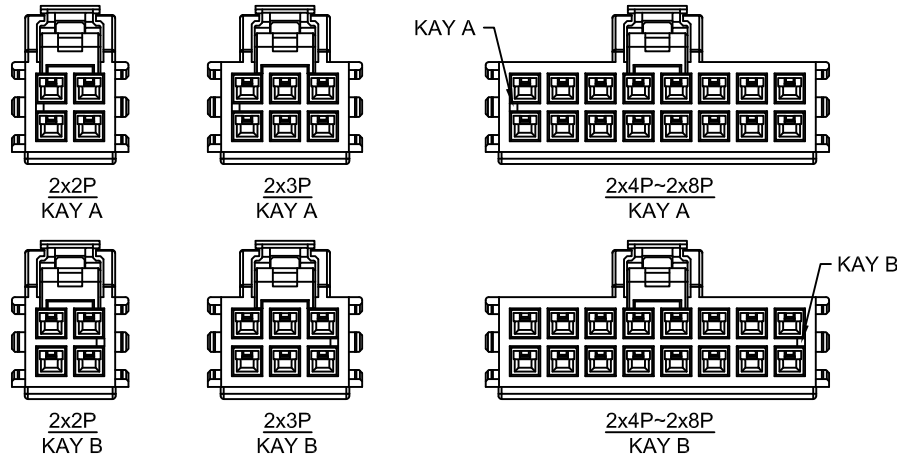
- Part No.
- Color.  
(Blank):Black,KAY A  
NAT:Natural,KAY B

**SPECIFICATIONS:**

Current Rating: 3A AC,DC  
Voltage Rating: 250V AC,DC  
Temperature Range: -25°C ~ +85°C  
Contact Resistance: 20mΩ Max  
Insulation Resistance: 1000MΩ Min  
Withstanding Voltage:1000VAC/minute  
Material: PA4T + 30%GF,UL94V-0(Black)

Ordering Information & Dimensions

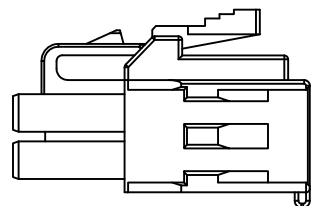
Circuits	Dimensions(mm)		Circuits	Dimensions(mm)	
	A	B		A	B
2x2P	2.50	7.70	2x6P	12.50	17.70
2x3P	5.00	10.20	2x7P	15.00	20.20
2x4P	7.50	12.70	2x8P	17.50	22.70
2x5P	10.00	15.20			



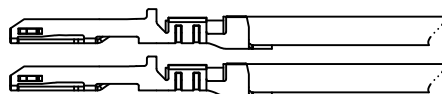
**HDGC** 深圳市华德共创科技有限公司  
Shenzhen Huade co-create Technology Co.,LTD  
TEL : 0755-27129737 FAX : 0755-29940187

-TOLERANCES- UNLESS OTHERWISE SPECIFIED 公差参数表				TITLE: 产品名称: 2.50mm Pitch Housing	
X.X	±0.30	X.X°	±3°	APPD: 核准:	XIE
X.XX	±0.30	X.XX°	±2°	CHECK: 校对:	WANG
X.XXX	±0.10	X.XXX°	±1°	DRAW: 绘图:	WANG
PART NO: 产品编号:		HDGC2509HFA-2xXP			
DATE	SCALE	UNIT	CODE NUMBER		
2019-05-30	2.5:1	mm	A008		

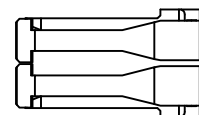
修订 REV	标记 MARK	修改摘要 REVISION DESCRIPTION	签名 SIGNATURE	日期 DATE
AO		NEW RELEASE	WANG	2019-05-30



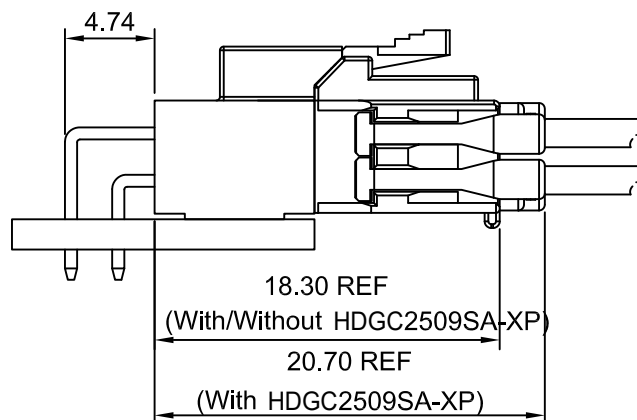
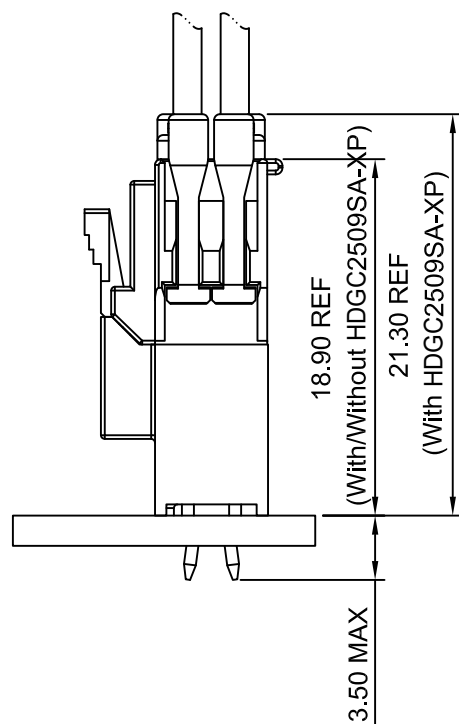
HDGC2509HFA-2xXP



HDGC2509-T-B/HDGC2509-T-B-L



HDGC2509SA-XP



Ordering Information:  
HDGC2509HFA-2xXP - \*\*\*  
 1 2

- Part No.
- Color.  
 (Blank):Black,KAY A  
 NAT:Natural,KAY B

**SPECIFICATIONS:**  
 Current Rating: 3A AC,DC  
 Voltage Rating: 250V AC,DC  
 Temperature Range: -25°C ~ +85°C  
 Contact Resistance: 20mΩ Max  
 Insulation Resistance: 1000MΩ Min  
 Withstanding Voltage:1000VAC/minute  
 Material: PA4T + 30%GF,UL94V-0(Black)



**深圳市华德共创科技有限公司**

Shenzhen Huade co-create Technology Co.,LTD  
 TEL : 0755-27129737 FAX : 0755-29940187

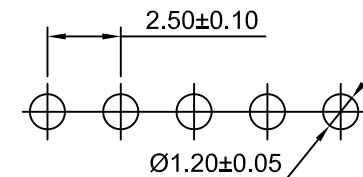
-TOLERANCES- UNLESS OTHERWISE SPECIFIED 公差参数表						TITLE: 2.50mm Pitch 产品名称: Housing			
X.X	±0.30	X.X°	±3°	APPD: 核准:	XIE	PART NO: 产品编号: HDGC2509HFA-2xXP			
X.XX	±0.30	X.XX°	±2°	CHECK: 校对:	WANG	DATE	SCALE	UNIT	CODE NUMBER
X.XXX	±0.10	X.XXX°	±1°	DRAW: 绘图:	WANG	2019-05-30	2.5:1	mm	A008

修订 REV	标记 MARK	修改摘要 REVISION DESCRIPTION	签名 SIGNATURE	日期 DATE
AO		NEW RELEASE	WANG	2017-10-25

### Ordering Information:

HDGC2509WV-XP -  $\frac{***}{1}$  -  $\frac{**}{2}$  -  $\frac{**}{3}$  -  $\frac{**}{4}$

- Part No.
- Material:  
(blank):Nylon 66+20%GF,UL94V-0  
GWT:Nylon 66,UL94V-0,GWT 750°C
- Color:  
(Blank):Natural  
RD:Red  
YL:Yellow  
BL:Blue
- Finish:  
(blank):Tin over Nickel  
G:Gold over Nickel



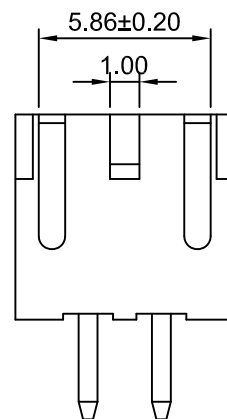
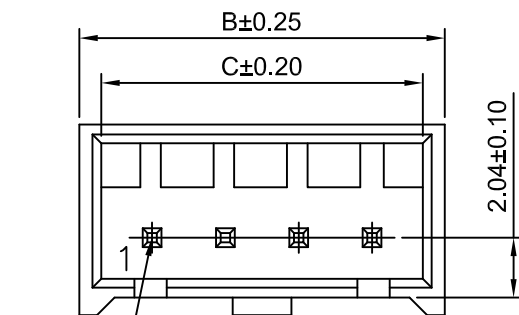
P.C.B LAYOUT

### SPECIFICATIONS:

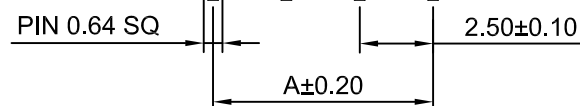
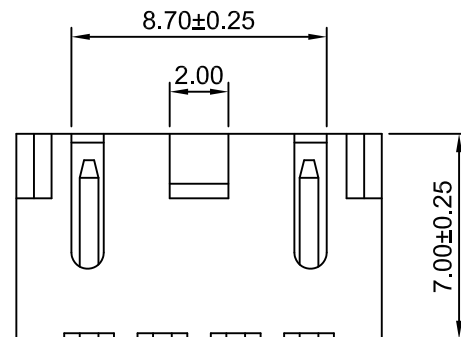
Current Rating: 3A AC,DC  
Voltage Rating: 250V AC,DC  
Temperature Range:-25°C ~ +85°C  
Contact Resistance: 20mΩ Max  
Insulation Resistance: 1000MΩ Min  
Withstanding Voltage:1000VAC/minute  
Pin Material: Brass/Tin over Nickel  
Material: Nylon 66+20%GF,UL94V-0(Natural)

### Ordering Information & Dimensions

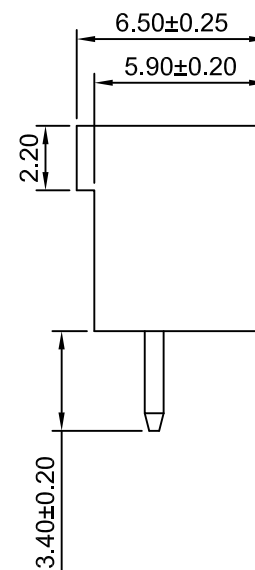
Circuits	Dimensions(mm)			Circuits	Dimensions(mm)		
	A	B	C		A	B	C
2P	2.50	7.46	5.96	9P	20.00	24.96	23.46
3P	5.00	9.96	8.46	10P	22.50	27.46	25.96
4P	7.50	12.46	10.96	11P	25.00	29.96	28.46
5P	10.00	14.96	13.46	12P	27.50	32.46	30.96
6P	12.50	17.46	15.96	13P	30.00	34.96	33.46
7P	15.00	19.96	18.46	14P	32.50	37.46	35.96
8P	17.50	22.46	20.96	15P	35.00	39.96	38.46



2P~3P



4P~15P



**HDGC** 深圳市华德共创科技有限公司  
Shenzhen Huade co-create Technology Co.,LTD  
TEL : 0755-27129737 FAX : 0755-29940187

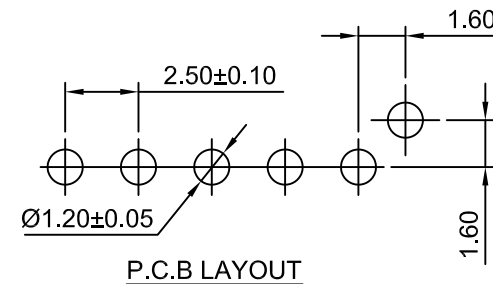
-TOLERANCES- UNLESS OTHERWISE SPECIFIED 公差参数表				TITLE: 产品名称: 2.50mm Pitch 180° Wafer	
X.X	±0.30	X.X°	±3°	APPD: 核准:	XIE
X.XX	±0.30	X.XX°	±2°	CHECK: 校对:	WANG
X.XXX	±0.10	X.XXX°	±1°	DRAW: 绘图:	WANG
PART NO: 产品编号:			HDGC2509WV-XP		
DATE	SCALE	UNIT	CODE NUMBER		
2017-10-25	4:1	mm	A008		

修订 REV	标记 MARK	修改摘要 REVISION DESCRIPTION	签名 SIGNATURE	日期 DATE
AO		NEW RELEASE	WANG	2017-10-25

**Ordering Information:**

HDGC2509WV-F-XP - \*\*\* - \*\* - \*\*  
1 2 3 4

- Part No.
- Material:  
(blank):Nylon 66+20%GF,UL94V-0  
GWT:Nylon 66,UL94V-0,GWT 750°C
- Color:  
(Blank):Natural  
RD:Red  
YL:Yellow  
BL:Blue
- Finish:  
(blank):Tin over Nickel  
G:Gold over Nickel

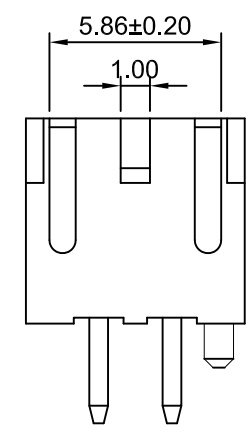
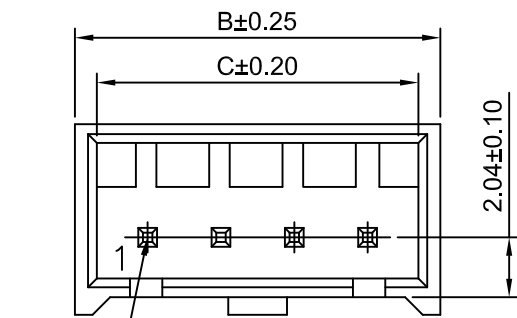


**SPECIFICATIONS:**

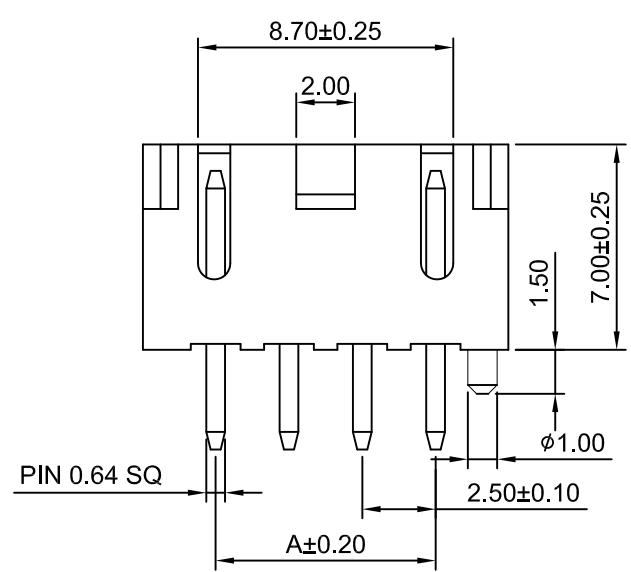
Current Rating: 3A AC,DC  
Voltage Rating: 250V AC,DC  
Temperature Range: -25°C ~ +85°C  
Contact Resistance: 20mΩ Max  
Insulation Resistance: 1000MΩ Min  
Withstanding Voltage:1000VAC/minute  
Pin Material: Brass/Tin over Nickel  
Material: Nylon 66+20%GF,UL94V-0(Natural)

**Ordering Information & Dimensions**

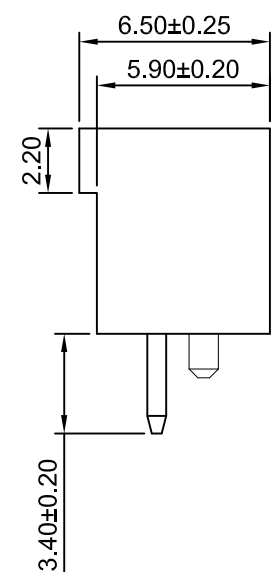
Circuits	Dimensions(mm)			Circuits	Dimensions(mm)		
	A	B	C		A	B	C
2P	2.50	7.46	5.96	9P	20.00	24.96	23.46
3P	5.00	9.96	8.46	10P	22.50	27.46	25.96
4P	7.50	12.46	10.96	11P	25.00	29.96	28.46
5P	10.00	14.96	13.46	12P	27.50	32.46	30.96
6P	12.50	17.46	15.96	13P	30.00	34.96	33.46
7P	15.00	19.96	18.46	14P	32.50	37.46	35.96
8P	17.50	22.46	20.96	15P	35.00	39.96	38.46



2P~3P



4P~15P



**HDGC** 深圳市华德共创科技有限公司  
Shenzhen Huade co-create Technology Co.,LTD  
TEL : 0755-27129737 FAX : 0755-29940187

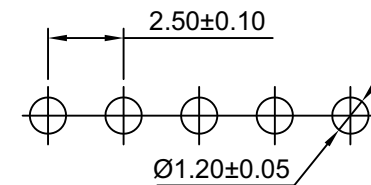
-TOLERANCES- OTHERWISE SPECIFIED 公差参数表				TITLE: 产品名称: 2.50mm Pitch 180° Wafer	
X.X	±0.30	X.X°	±3°	APPD: 核准:	XIE
X.XX	±0.30	X.XX°	±2°	CHECK: 校对:	WANG
X.XXX	±0.10	X.XXX°	±1°	DRAW: 绘图:	WANG
PART NO: 产品编号:				HDGC2509WV-F-XP	
DATE		SCALE	UNIT	CODE NUMBER	
2017-10-25		4:1	mm	A008	

修订 REV	标记 MARK	修改摘要 REVISION DESCRIPTION	签名 SIGNATURE	日期 DATE
AO		NEW RELEASE	WANG	2017-10-25

**Ordering Information:**

HDGC2509WR-XP -  $\frac{***}{1}$  -  $\frac{**}{2}$  -  $\frac{**}{3}$  -  $\frac{**}{4}$

- Part No.
- Material:  
(blank): Nylon 66+20%GF, UL94V-0  
GWT: Nylon 66, UL94V-0, GWT 750 °C
- Color:  
(Blank): Natural  
RD: Red  
YL: Yellow  
BL: Blue
- Finish:  
(blank): Tin over Nickel  
G: Gold over Nickel



P.C.B LAYOUT

**SPECIFICATIONS:**

Current Rating: 3A AC,DC  
Voltage Rating: 250V AC,DC  
Temperature Range: -25°C ~ +85°C  
Contact Resistance: 20mΩ Max  
Insulation Resistance: 1000MΩ Min  
Withstanding Voltage: 1000VAC/minute  
Pin Material: Brass/Tin over Nickel  
Material: Nylon 66+20%GF, UL94V-0(Natural)

**Ordering Information & Dimensions**

Circuits	Dimensions(mm)			Circuits	Dimensions(mm)		
	A	B	C		A	B	C
2P	2.50	7.46	5.96	9P	20.00	24.96	23.46
3P	5.00	9.96	8.46	10P	22.50	27.46	25.96
4P	7.50	12.46	10.96	11P	25.00	29.96	28.46
5P	10.00	14.96	13.46	12P	27.50	32.46	30.96
6P	12.50	17.46	15.96	13P	30.00	34.96	33.46
7P	15.00	19.96	18.46	14P	32.50	37.46	35.96
8P	17.50	22.46	20.96	15P	35.00	39.96	38.46

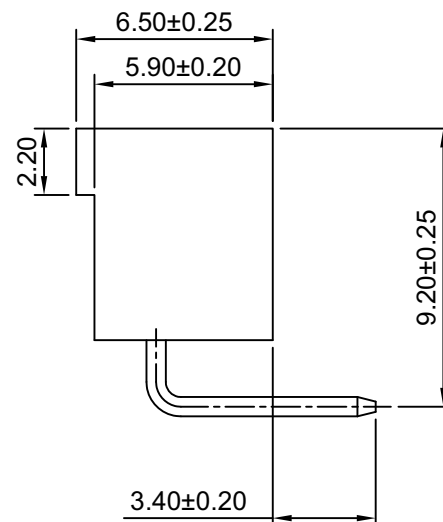
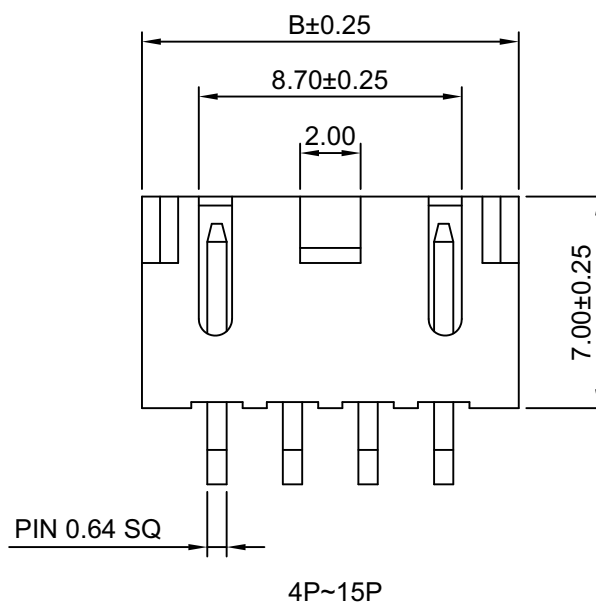
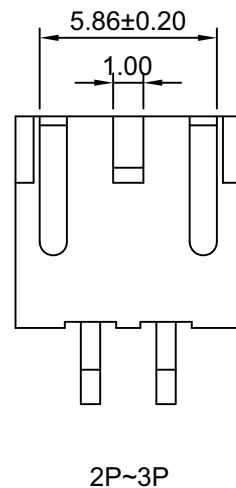
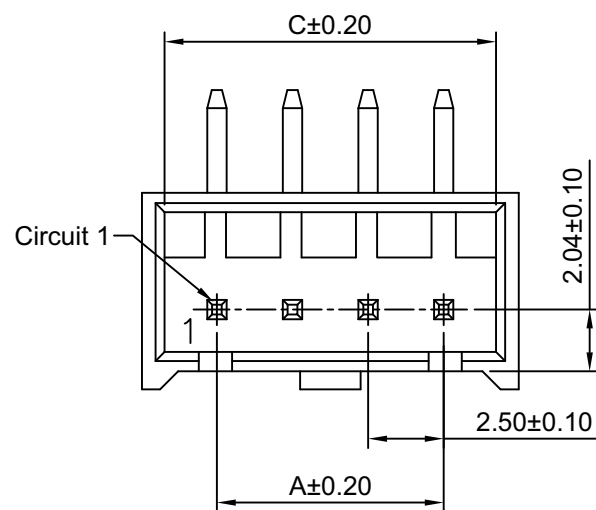


**深圳市华德共创科技有限公司**

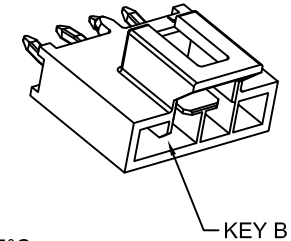
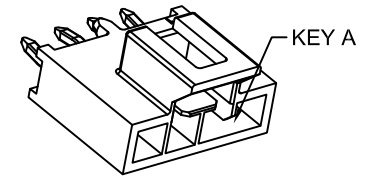
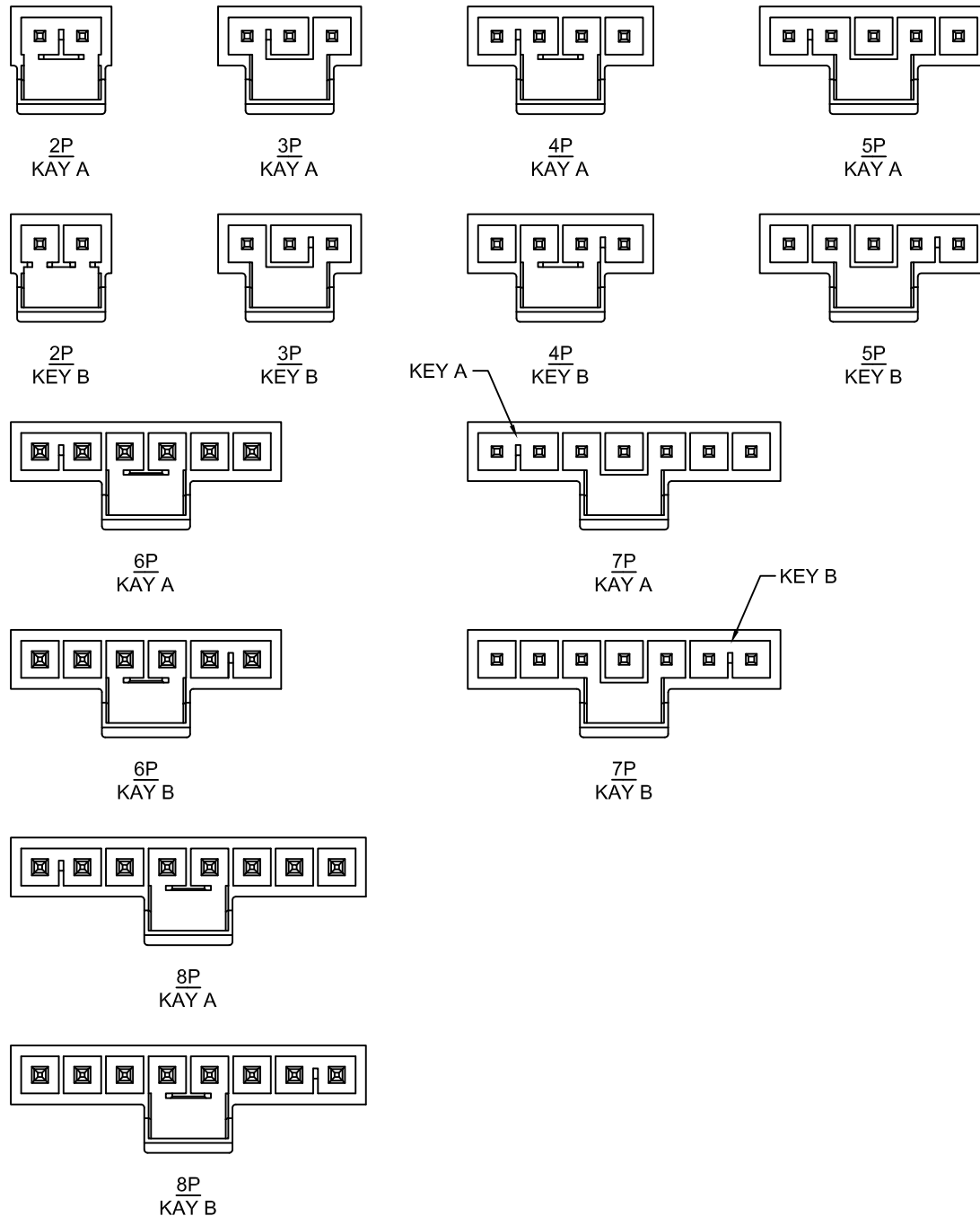
Shenzhen Huade co-create Technology Co., LTD

TEL : 0755-27129737 FAX : 0755-29940187

-TOLERANCES- OTHERWISE SPECIFIED 公差参数表				TITLE: 产品名称: 2.50mm Pitch 90° Wafer	
X.X	±0.30	X.X°	±3°	APPD: 核准:	XIE
X.XX	±0.30	X.XX°	±2°	CHECK: 校对:	WANG
X.XXX	±0.10	X.XXX°	±1°	DRAW: 绘图:	WANG
PART NO: 产品编号:		HDGC2509WR-XP			
DATE	SCALE	UNIT	CODE NUMBER		
2017-10-25	4:1	mm	A008		



修订 REV	标记 MARK	修改摘要 REVISION DESCRIPTION	签名 SIGNATURE	日期 DATE
AO		NEW RELEASE	WANG	2018-08-22



Ordering Information:  
**HDGC2509WVA-XP - \*\*\***  
 1 2

- Part No.
- Color.  
 (Blank):Black,KAY A  
 NAT:Natural,KAY B

**SPECIFICATIONS:**

Current Rating: 6.5A AC,DC  
 Voltage Rating: 250V AC,DC  
 Temperature Range: -25°C ~ +85°C  
 Contact Resistance: 10mΩ Max  
 Insulation Resistance: 1000MΩ Min  
 Withstanding Voltage:1500VAC/minute  
 Pin Material: Brass/Tin over Nickel  
 Material: LCP,UL94V-0(Black)

Ordering Information & Dimensions

Circuits	Dimensions(mm)			
	A	B	R	L
2P	2.50	5.94	P1	P2
3P	5.00	8.44	P1.P3	P2
4P	7.50	10.94	P1.P4	P2.P3
5P	10.00	13.44	P1.P5	P2.P4
6P	12.50	15.94	P1.P6	P2.P5
7P	15.00	18.44	P1.P7	P2.P6
8P	17.50	20.94	P1.P8	P2.P7

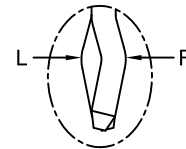
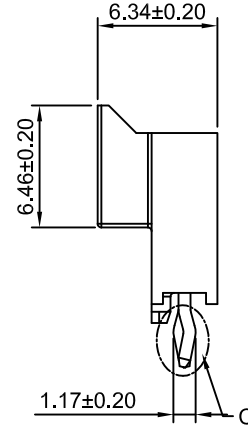
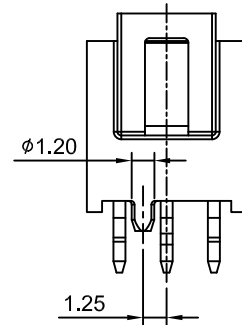
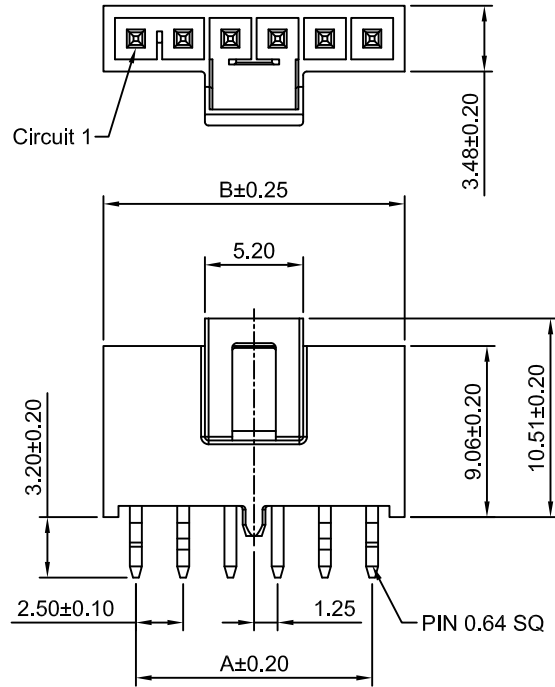


深圳市华德共创科技有限公司

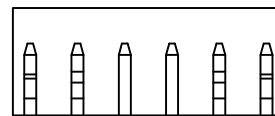
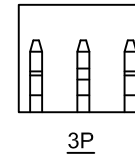
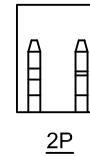
Shenzhen Huade co-create Technology Co.,LTD  
 TEL : 0755-27129737 FAX : 0755-29940187

-TOLERANCES- UNLESS OTHERWISE SPECIFIED 公差参数表						TITLE: 2.50mm Pitch 产品名称: 180° Wafer			
X.X	±0.30	X.X°	±3°	APPD: 核准:	XIE	PART NO: 产品编号: HDGC2509WVA-XP			
X.XX	±0.30	X.XX°	±2°	CHECK: 校对:	WANG	DATE	SCALE	UNIT	CODE NUMBER
X.XXX	±0.10	X.XXX°	±1°	DRAW: 绘图:	WANG	2018-08-22	2.5:1	mm	A008

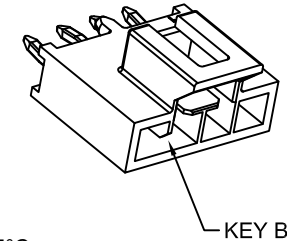
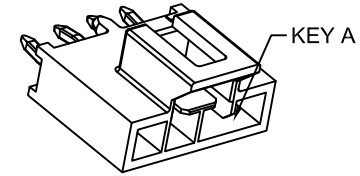
修订 REV	标记 MARK	修改摘要 REVISION DESCRIPTION	签名 SIGNATURE	日期 DATE
AO		NEW RELEASE	WANG	2018-08-22



Detail:C  
Scale 2:1



4P~8P



Ordering Information:  
**HDGC2509WVA-XP - \*\*\***

1.Part No.  
2.Color.  
(Blank):Black,KAY A  
NAT:Natural,KAY B

**SPECIFICATIONS:**

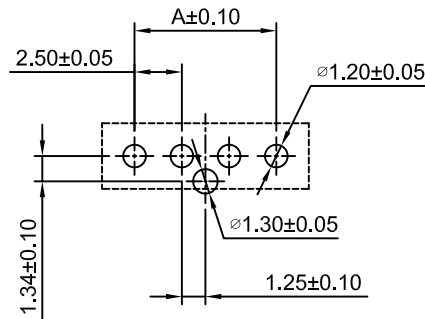
Current Rating: 6.5A AC,DC  
Voltage Rating: 250V AC,DC  
Temperature Range: -25°C ~ +85°C  
Contact Resistance: 10mΩ Max  
Insulation Resistance: 1000MΩ Min  
Withstanding Voltage:1500VAC/minute  
Pin Material: Brass/Tin over Nickel  
Material: LCP,UL94V-0(Black)

Ordering Information & Dimensions

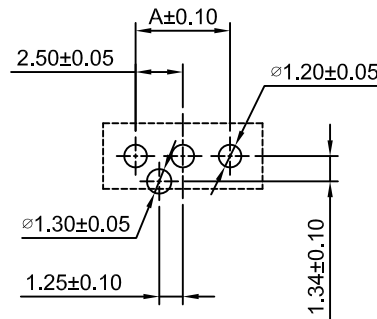
Circuits	Dimensions(mm)			
	A	B	R	L
2P	2.50	5.94	P1	P2
3P	5.00	8.44	P1.P3	P2
4P	7.50	10.94	P1.P4	P2.P3
5P	10.00	13.44	P1.P5	P2.P4
6P	12.50	15.94	P1.P6	P2.P5
7P	15.00	18.44	P1.P7	P2.P6
8P	17.50	20.94	P1.P8	P2.P7

Even Positions  
2P.4P.6P.8P

Odd Positions  
3P.5P.7P



Even Positions  
2P.4P.6P.8P



Odd Positions  
3P.5P.7P

P.C.B LAYOUT



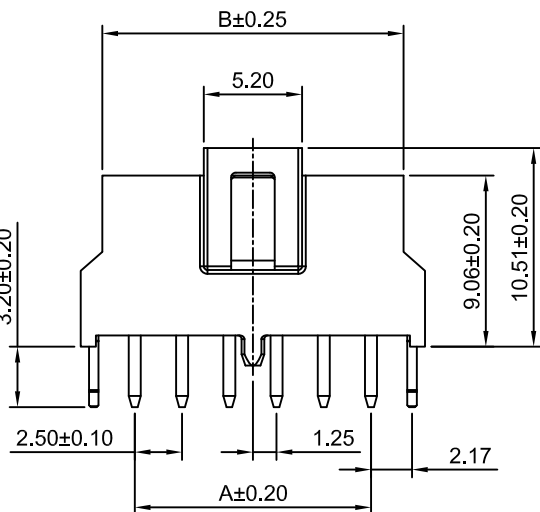
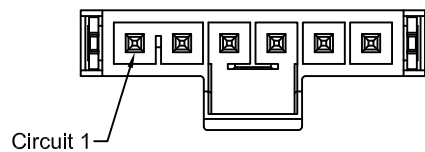
深圳市华德共创科技有限公司

Shenzhen Huade co-create Technology Co.,LTD

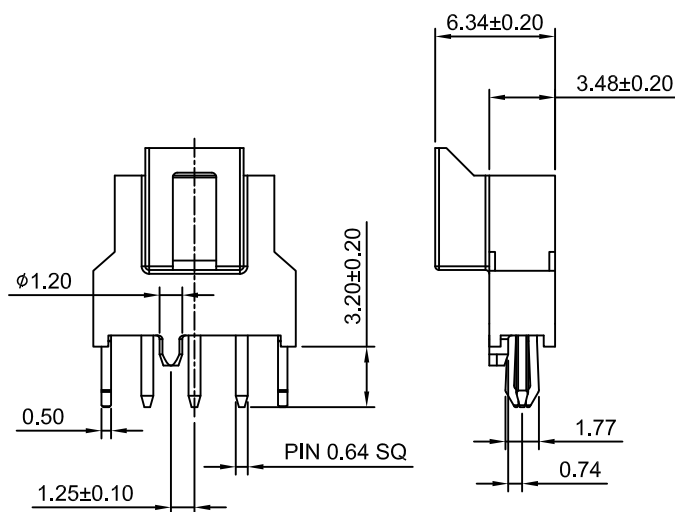
TEL : 0755-27129737 FAX : 0755-29940187

-TOLERANCES- UNLESS OTHERWISE SPECIFIED 公差参数表				TITLE: 产品名称: 2.50mm Pitch 180° Wafer	
X.X	±0.30	X.X°	±3°	APPD: 核准:	XIE
X.XX	±0.30	X.XX°	±2°	CHECK: 校对:	WANG
X.XXX	±0.10	X.XXX°	±1°	DRAW: 绘图:	WANG
PART NO: 产品编号:			HDGC2509WVA-XP		
DATE	SCALE	UNIT	CODE NUMBER		
2018-08-22	2.5:1	mm	A008		

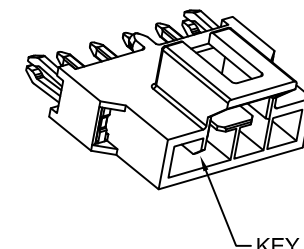
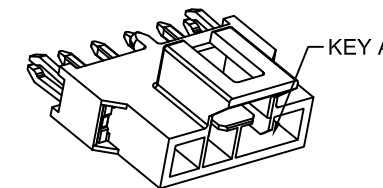
修订 REV	标记 MARK	修改摘要 REVISION DESCRIPTION	签名 SIGNATURE	日期 DATE
AO		NEW RELEASE	WANG	2018-08-22



Even Positions  
2P.4P.6P.8P



Odd Positions  
3P.5P.7P



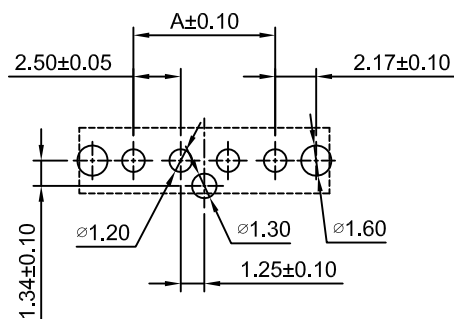
Ordering Information:  
HDGC2509WVA-F-XP - \*\*\*  
1 2  
1.Part No.  
2.Color.  
(Blank):Black,KAY A  
NAT:Natural,KAY B

**SPECIFICATIONS:**

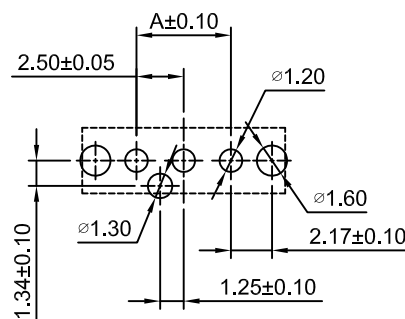
Current Rating: 6.5A AC,DC  
Voltage Rating: 250V AC,DC  
Temperature Range: -25°C ~ +85°C  
Contact Resistance: 10mΩ Max  
Insulation Resistance: 1000MΩ Min  
Withstanding Voltage: 1500VAC/minute  
Pin Material: Brass/Tin over Nickel  
Material: LCP,UL94V-0(Black)

**Ordering Information & Dimensions**

Circuits	Dimensions(mm)		Circuits	Dimensions(mm)	
	A	B		A	B
2P	2.50	5.94	6P	12.50	15.94
3P	5.00	8.44	7P	15.00	18.44
4P	7.50	10.94	8P	17.50	20.94
5P	10.00	13.44			



Even Positions  
2P.4P.6P.8P



Odd Positions  
3P.5P.7P

**P.C.B LAYOUT**



深圳市华德共创科技有限公司

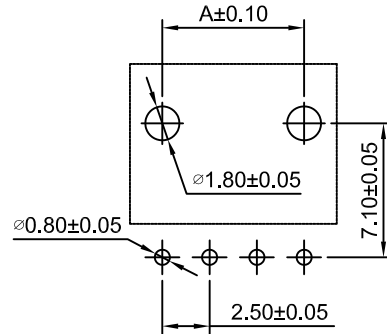
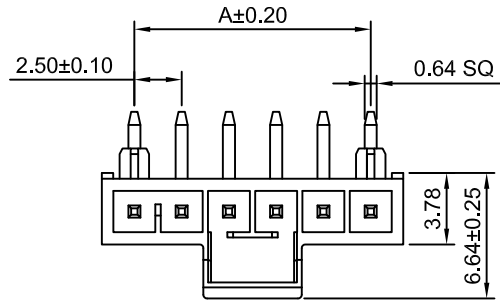
Shenzhen Huade co-create Technology Co.,LTD

TEL : 0755-27129737 FAX : 0755-29940187

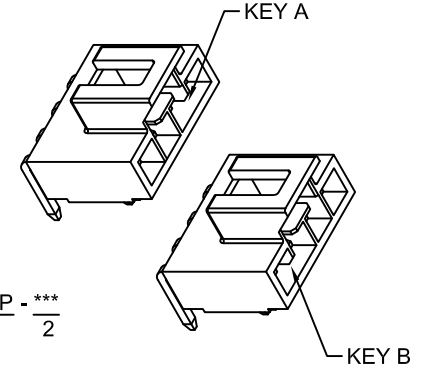
-TOLERANCES- UNLESS OTHERWISE SPECIFIED 公差参数表						TITLE: 2.50mm Pitch 产品名称: 180° Wafer	
X.X	±0.30	X.X°	±3°	APPD: 核准:	XIE	PART NO: 产品编号: HDGC2509WVA-F-XP	
X.XX	±0.30	X.XX°	±2°	CHECK: 校对:	WANG	DATE	SCALE
X.XXX	±0.10	X.XXX°	±1°	DRAW: 绘图:	WANG	2018-08-22	UNIT
						2.5:1	CODE NUMBER
						mm	A008



修订 REV	标记 MARK	修改摘要 REVISION DESCRIPTION	签名 SIGNATURE	日期 DATE
AO		NEW RELEASE	WANG	2018-08-22



P.C.B LAYOUT



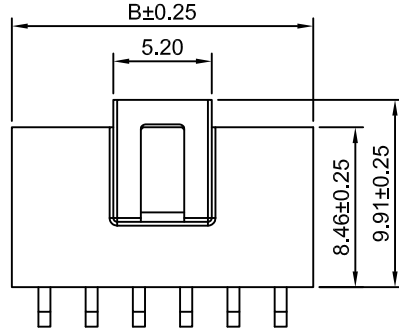
Ordering Information:  
 HDGC2509WRA-F-XP - \*\*\*  
 1 2

- 1.Part No.
- 2.Color.  
 (Blank):Black,KAY A  
 NAT:Natural,KAY B

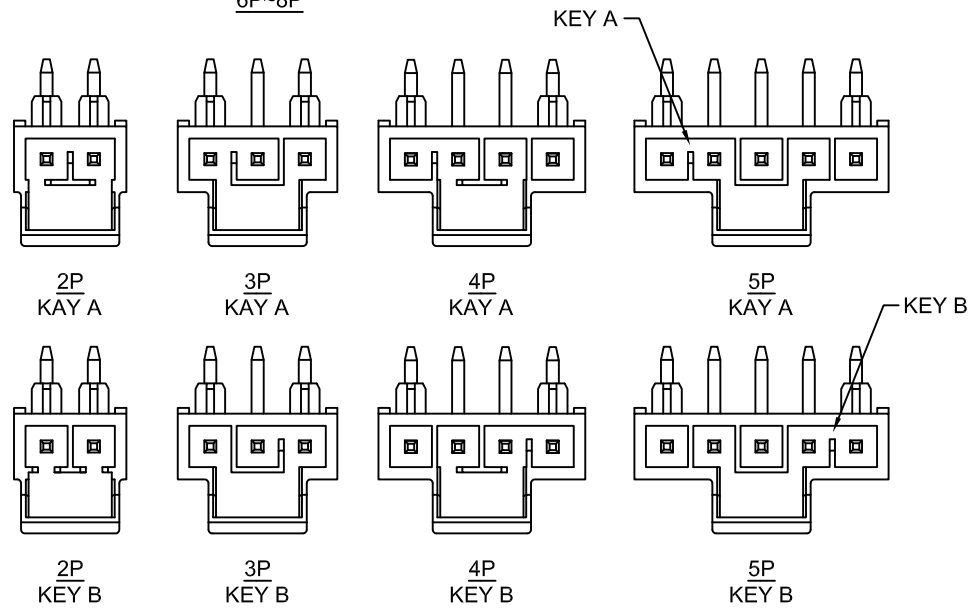
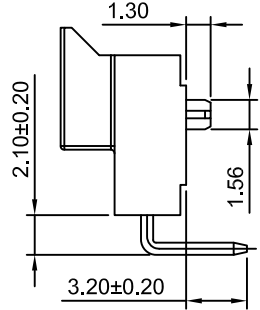
**SPECIFICATIONS:**  
 Current Rating: 6.5A AC,DC  
 Voltage Rating: 250V AC,DC  
 Temperature Range:-25°C ~ +85°C  
 Contact Resistance: 10mΩ Max  
 Insulation Resistance: 1000MΩ Min  
 Withstanding Voltage:1500VAC/minute  
 Pin Material: Brass/Tin over Nickel  
 Material: LCP,UL94V-0(Black)

Ordering Information & Dimensions

Circuits	Dimensions(mm)		Circuits	Dimensions(mm)	
	A	B		A	B
2P	2.50	5.95	6P	12.50	15.95
3P	5.00	8.45	7P	15.00	18.45
4P	7.50	10.95	8P	17.50	20.95
5P	10.00	13.45			



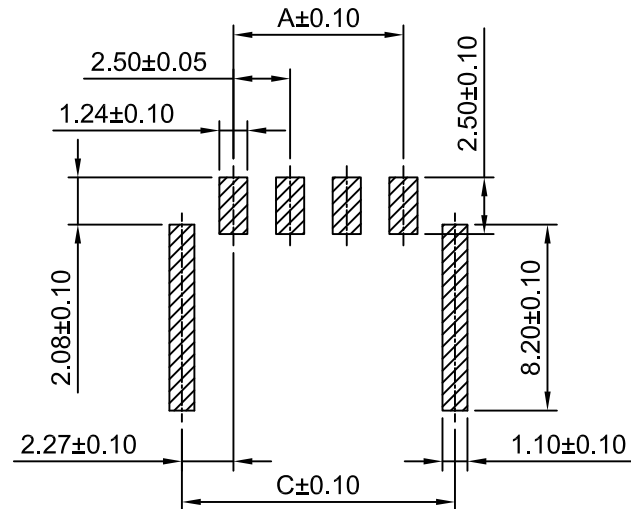
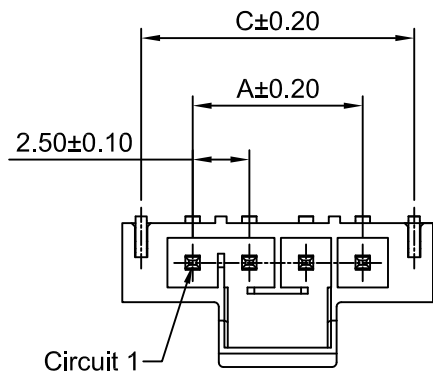
6P~8P



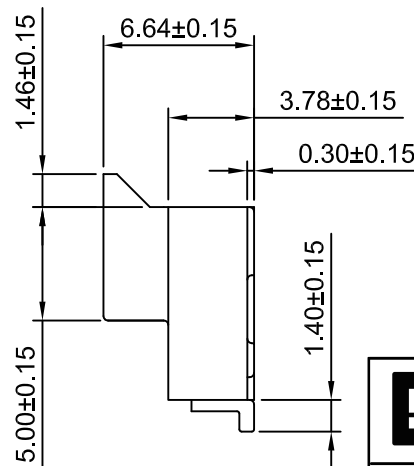
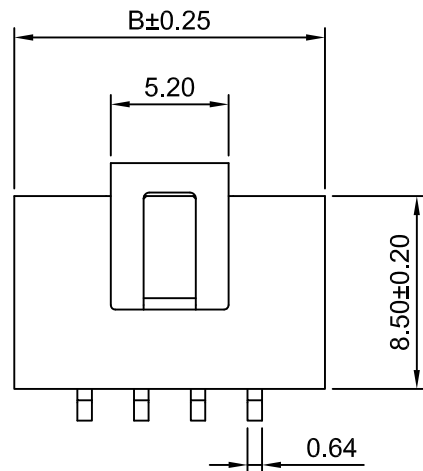
**HDGC** 深圳市华德共创科技有限公司  
 Shenzhen Huade co-create Technology Co.,LTD  
 TEL : 0755-27129737 FAX : 0755-29940187

-TOLERANCES- UNLESS OTHERWISE SPECIFIED 公差参数表				TITLE: 2.50mm Pitch 产品名称: 90° Wafer			
X.X	±0.30	X.X° ±3°	APPD: 核准: XIE	PART NO: 产品编号: HDGC2509WRA-F-XP			
X.XX	±0.30	X.XX° ±2°	CHECK: 校对: WANG	DATE	SCALE	UNIT	CODE NUMBER
X.XXX	±0.10	X.XXX° ±1°	DRAW: 绘图: WANG	2018-08-22	2.5:1	mm	A008

修订 REV	标记 MARK	修改摘要 REVISION DESCRIPTION	签名 SIGNATURE	日期 DATE
AO		NEW RELEASE	WANG	2018-08-22

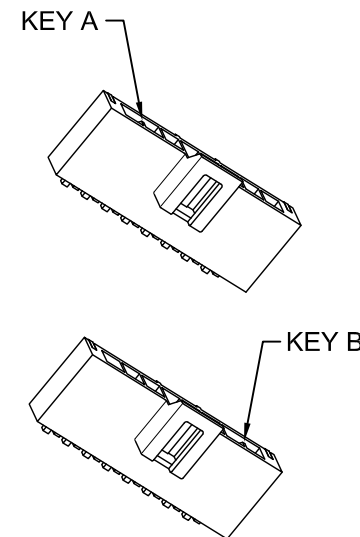


P.C.B LAYOUT



Ordering Information:  
HDGC2509WRA-S-XP - \*\*\*  
1 2

- Part No.
- Color.  
(Blank):Black,KAY A  
NAT:Natural,KAY B



SPECIFICATIONS:

Current Rating: 6.5A AC,DC  
Voltage Rating: 250V AC,DC  
Temperature Range: -25°C ~ +85°C  
Contact Resistance: 10mΩ Max  
Insulation Resistance: 1000MΩ Min  
Withstanding Voltage:1500VAC/minute  
Pin Material: Brass/Tin over Nickel  
Material: LCP,UL94V-0(Black)

Ordering Information & Dimensions

Circuits	Dimensions(mm)			Circuits	Dimensions(mm)		
	A	B	C		A	B	C
2P	2.50	8.74	7.04	6P	12.50	18.74	17.04
3P	5.00	11.24	9.54	7P	15.00	21.24	19.54
4P	7.50	13.74	12.04	8P	17.50	23.74	22.04
5P	10.00	16.24	14.54				



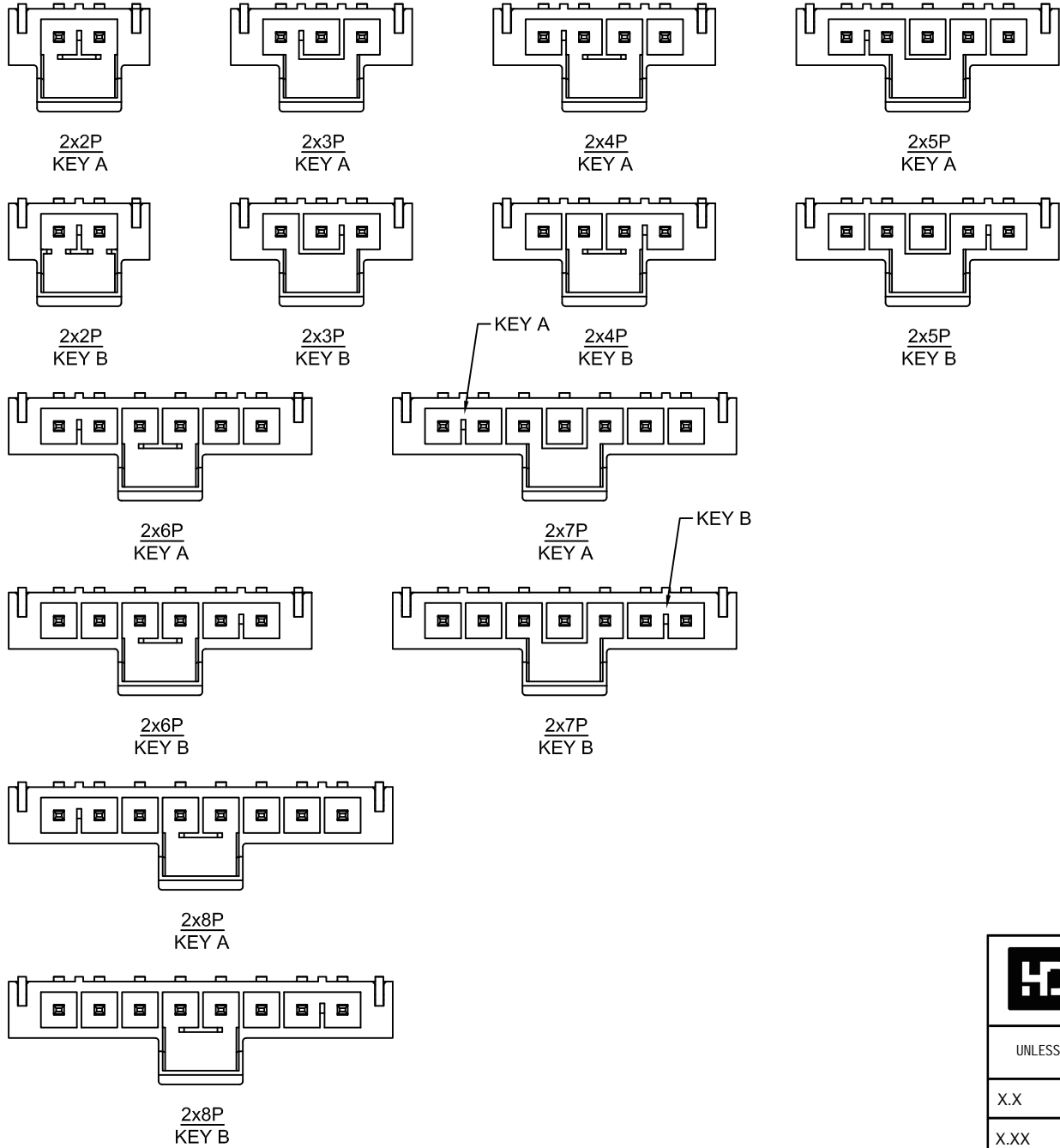
深圳市华德共创科技有限公司

Shenzhen Huade co-create Technology Co.,LTD

TEL : 0755-27129737 FAX : 0755-29940187

-TOLERANCES- UNLESS OTHERWISE SPECIFIED 公差参数表						TITLE: 产品名称: 2.50mm Pitch 90° Wafer	
X.X	±0.30	X.X°	±3°	APPD: 核准:	XIE	PART NO: 产品编号: HDGC2509WRA-S-XP	
X.XX	±0.30	X.XX°	±2°	CHECK: 校对:	WANG	DATE	SCALE
X.XXX	±0.10	X.XXX°	±1°	DRAW: 绘图:	WANG	2018-08-22	3:1
						UNIT	CODE NUMBER
						mm	A008

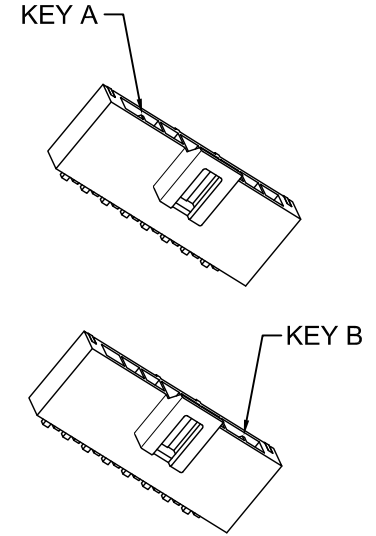
修订 REV	标记 MARK	修改摘要 REVISION DESCRIPTION	签名 SIGNATURE	日期 DATE
AO		NEW RELEASE	WANG	2018-08-22



**Ordering Information:**

HDGC2509WRA-S-XP - \*\*\*

- Part No.
- Color.  
(Blank):Black,KAY A  
NAT:Natural,KAY B



**SPECIFICATIONS:**

Current Rating: 6.5A AC,DC  
Voltage Rating: 250V AC,DC  
Temperature Range: -25°C ~ +85°C  
Contact Resistance: 10mΩ Max  
Insulation Resistance: 1000MΩ Min  
Withstanding Voltage:1500VAC/minute  
Pin Material: Brass/Tin over Nickel  
Material: LCP,UL94V-0(Black)

**Ordering Information & Dimensions**

Circuits	Dimensions(mm)			Circuits	Dimensions(mm)		
	A	B	C		A	B	C
2P	2.50	8.74	7.04	6P	12.50	18.74	17.04
3P	5.00	11.24	9.54	7P	15.00	21.24	19.54
4P	7.50	13.74	12.04	8P	17.50	23.74	22.04
5P	10.00	16.24	14.54				



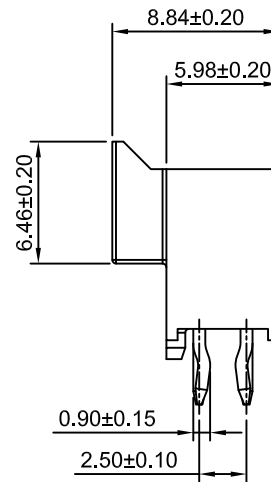
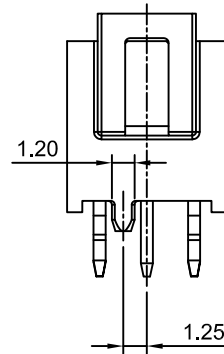
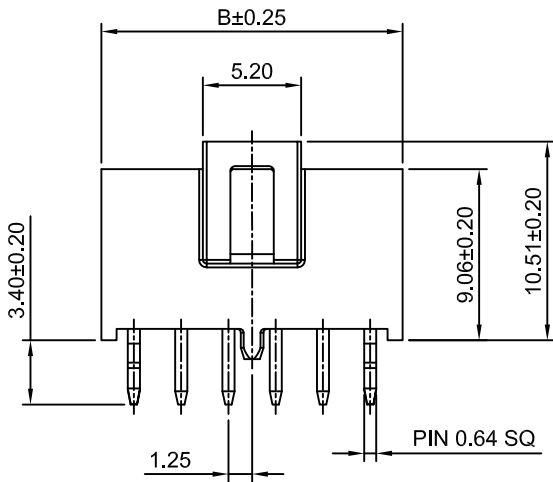
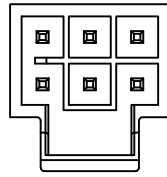
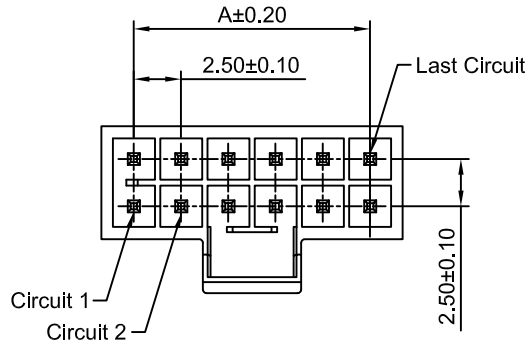
**深圳市华德共创科技有限公司**

Shenzhen Huade co-create Technology Co.,LTD

TEL : 0755-27129737 FAX : 0755-29940187

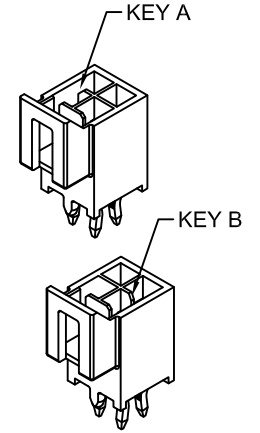
-TOLERANCES- UNLESS OTHERWISE SPECIFIED 公差参数表						TITLE: 产品名称: 2.50mm Pitch 90° Wafer			
X.X	±0.30	X.X°	±3°	APPD: 核准:	XIE	PART NO: 产品编号: HDGC2509WRA-S-2xXP			
X.XX	±0.30	X.XX°	±2°	CHECK: 校对:	WANG	DATE	SCALE	UNIT	CODE NUMBER
X.XXX	±0.10	X.XXX°	±1°	DRAW: 绘图:	WANG	2018-08-22	2.5:1	mm	A008

修订 REV	标记 MARK	修改摘要 REVISION DESCRIPTION	签名 SIGNATURE	日期 DATE
AO		NEW RELEASE	WANG	2018-08-22



Ordering Information:  
 HDGC2509WVA-2xXP - \*\*\*  
 1 2

- Part No.
- Color.  
 (Blank):Black,KAY A  
 NAT:Natural,KAY B



**SPECIFICATIONS:**

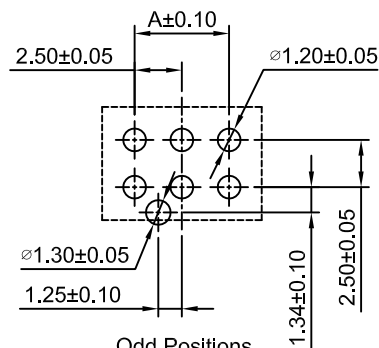
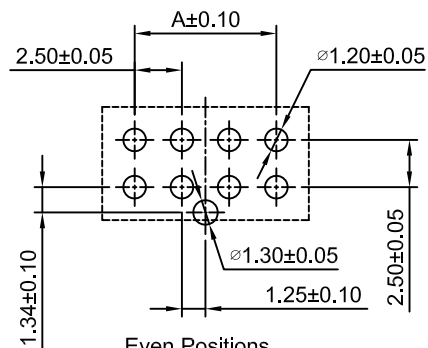
Current Rating: 6.5A AC,DC  
 Voltage Rating: 250V AC,DC  
 Temperature Range: -25°C ~ +85°C  
 Contact Resistance: 10mΩ Max  
 Insulation Resistance: 1000MΩ Min  
 Withstanding Voltage:1500VAC/minute  
 Pin Material: Brass/Tin over Nickel  
 Material: LCP,UL94V-0(Black)

Ordering Information & Dimensions

Circuits	Dimensions(mm)		Circuits	Dimensions(mm)	
	A	B		A	B
2x2P	2.50	5.94	2x6P	12.50	15.94
2x3P	5.00	8.44	2x7P	15.00	18.44
2x4P	7.50	10.94	2x8P	17.50	20.94
2x5P	10.00	13.44			

Even Positions  
 2x2P.2x4P.2x6P.2x8P

Odd Positions  
 2x3P.2x5P.2x7P



Even Positions  
 2x2P.2x4P.2x6P.2x8P

Odd Positions  
 2x3P.2x5P.2x7P

P.C.B LAYOUT



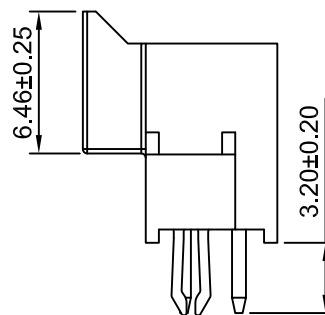
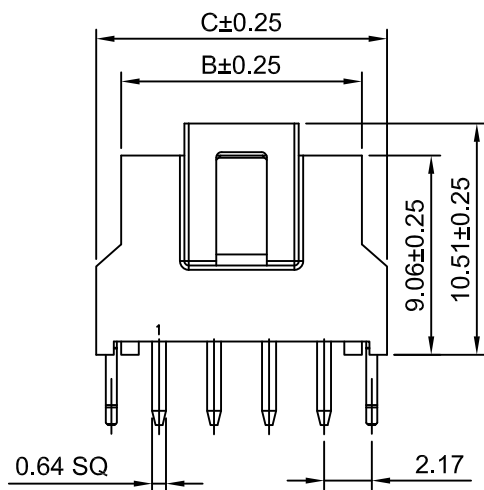
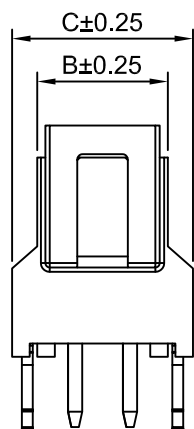
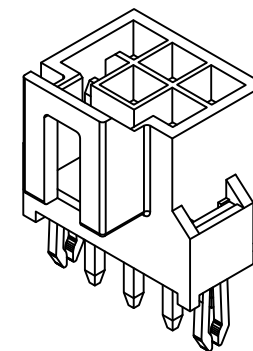
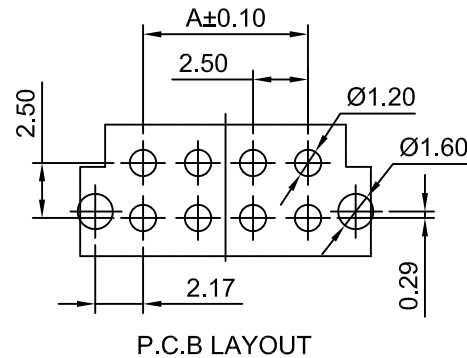
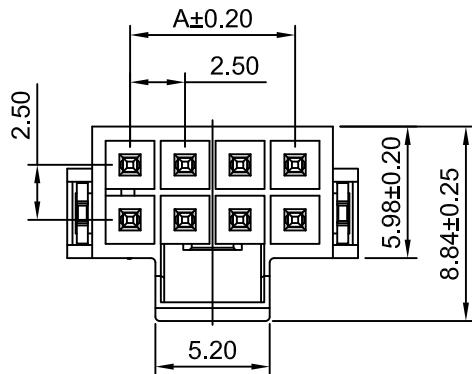
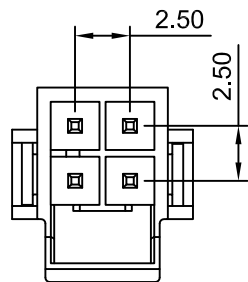
深圳市华德共创科技有限公司

Shenzhen Huade co-create Technology Co.,LTD  
 TEL : 0755-27129737 FAX : 0755-29940187

-TOLERANCES- UNLESS OTHERWISE SPECIFIED 公差参数表				TITLE: 产品名称: 2.50mm Pitch 180° Wafer	
X.X	±0.30	X.X°	±3°	APPD: 核准:	XIE
X.XX	±0.30	X.XX°	±2°	CHECK: 校对:	WANG
X.XXX	±0.10	X.XXX°	±1°	DRAW: 绘图:	WANG
PART NO: 产品编号:		HDGC2509WVA-2xXP			
DATE	SCALE	UNIT	CODE NUMBER		
2018-08-22	2.5:1	mm	A008		



修订 REV	标记 MARK	修改摘要 REVISION DESCRIPTION	签名 SIGNATURE	日期 DATE
AO		NEW RELEASE	WANG	2018-08-22



**SPECIFICATIONS:**

Current Rating: 6.5A AC,DC  
Voltage Rating: 250V AC,DC  
Temperature Range: -25°C ~ +85°C  
Contact Resistance: 10mΩ Max  
Insulation Resistance: 1000MΩ Min  
Withstanding Voltage: 1500VAC/minute  
Pin Material: Brass/Tin over Nickel  
Material: LCP, UL94V-0(Black)

**Ordering Information & Dimensions**

Circuits	Dimensions(mm)			Circuits	Dimensions(mm)		
	A	B	C		A	B	C
2x2P	2.50	5.95	8.22	2x6P	12.50	18.22	15.96
2x3P	5.00	8.45	10.72	2x7P	15.00	20.72	18.46
2x4P	7.50	10.95	13.22	2x8P	17.50	23.22	20.96
2x5P	10.00	13.45	15.72				

2x2P

2x3P~2x8P



**深圳市华德共创科技有限公司**

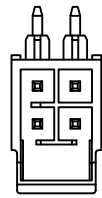
Shenzhen Huade co-create Technology Co.,LTD

TEL : 0755-27129737 FAX : 0755-29940187

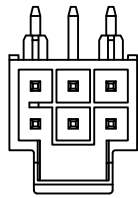
-TOLERANCES- UNLESS OTHERWISE SPECIFIED 公差参数表					TITLE: 2.50mm Pitch 产品名称: 180° Wafer				
X.X	±0.30	X.X°	±3°	APPD: 核准:	XIE				
X.XX	±0.30	X.XX°	±2°	CHECK: 校对:	WANG	DATE	SCALE	UNIT	CODE NUMBER
X.XXX	±0.10	X.XXX°	±1°	DRAW: 绘图:	WANG	2018-08-22	3:1	mm	A008



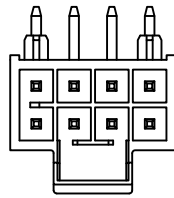
修订 REV	标记 MARK	修改摘要 REVISION DESCRIPTION	签名 SIGNATURE	日期 DATE
AO		NEW RELEASE	WANG	2018-08-22



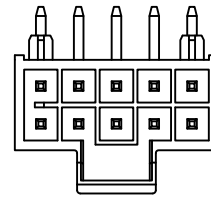
2x2P  
KEY A



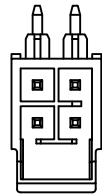
2x3P  
KEY A



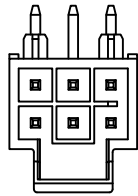
2x4P  
KEY A



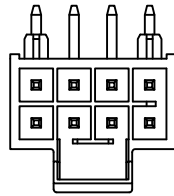
2x5P  
KEY A



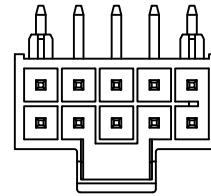
2x2P  
KEY B



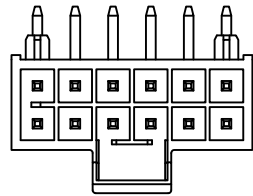
2x3P  
KEY B



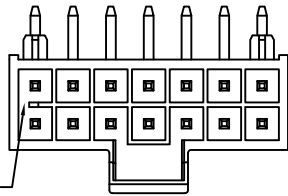
2x4P  
KEY B



2x5P  
KEY B

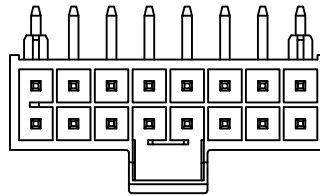


2x6P  
KEY A

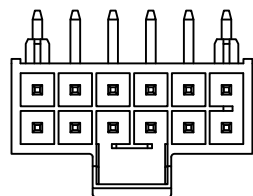


KEY A

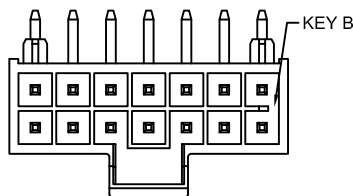
2x7P  
KEY A



2x8P  
KEY A

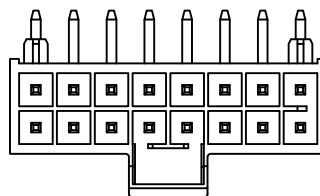


2x6P  
KEY B



KEY B

2x7P  
KEY B



2x8P  
KEY B

Ordering Information:

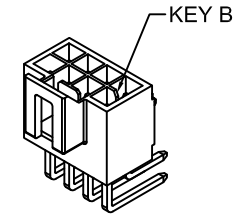
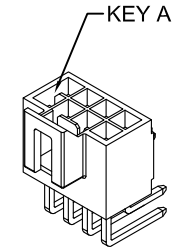
HDGC2509WRA-F-2xXP - \*\*\*  
1 2

1.Part No.

2.Color.

(Blank):Black,KAY A

NAT:Natural,KAY B



SPECIFICATIONS:

Current Rating: 6.5A AC,DC

Voltage Rating: 250V AC,DC

Temperature Range: -25°C ~ +85°C

Contact Resistance: 10mΩ Max

Insulation Resistance: 1000MΩ Min

Withstanding Voltage:1500VAC/minute

Pin Material: Brass/Tin over Nickel

Material: LCP,UL94V-0(Black)

Ordering Information & Dimensions

Circuits	Dimensions(mm)		Circuits	Dimensions(mm)	
	A	B		A	B
2x2P	2.50	5.94	2x6P	12.50	15.94
2x3P	5.00	8.44	2x7P	15.00	18.44
2x4P	7.50	10.94	2x8P	17.50	20.94
2x5P	10.00	13.44			



深圳市华德共创科技有限公司

Shenzhen Huade co-create Technology Co.,LTD

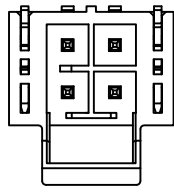
TEL : 0755-27129737

FAX : 0755-29940187

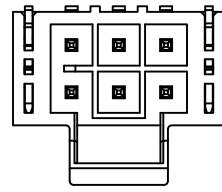
-TOLERANCES- UNLESS OTHERWISE SPECIFIED 公差参数表						TITLE: 2.50mm Pitch 产品名称: 90° Wafer			
X.X	±0.30	X.X°	±3°	APPD: 核准:	XIE	PART NO: 产品编号: HDGC2509WRA-F-2xXP			
X.XX	±0.30	X.XX°	±2°	CHECK: 校对:	WANG	DATE	SCALE	UNIT	CODE NUMBER
X.XXX	±0.10	X.XXX°	±1°	DRAW: 绘图:	WANG	2018-08-22	2:1	mm	A008



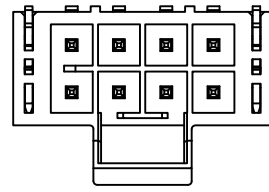
修订 REV	标记 MARK	修改摘要 REVISION DESCRIPTION	签名 SIGNATURE	日期 DATE
AO		NEW RELEASE	WANG	2018-08-22



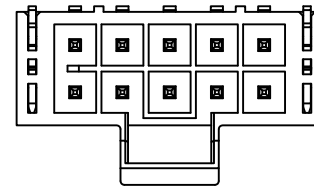
2x2P  
KEY A



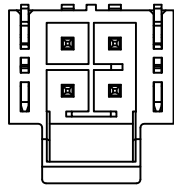
2x3P  
KEY A



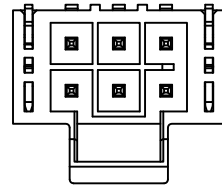
2x4P  
KEY A



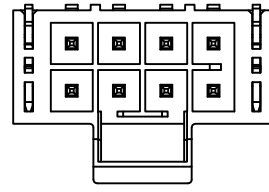
2x5P  
KEY A



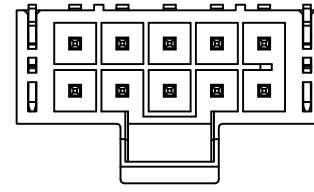
2x2P  
KEY B



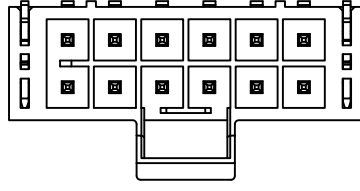
2x3P  
KEY B



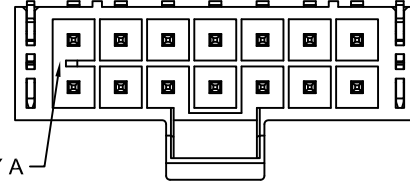
2x4P  
KEY B



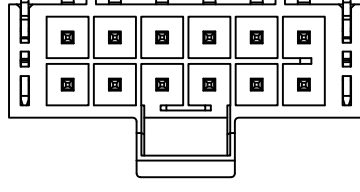
2x5P  
KEY B



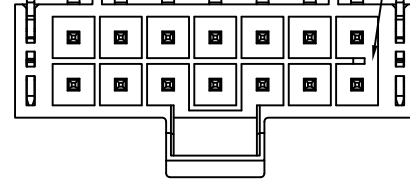
2x6P  
KEY A



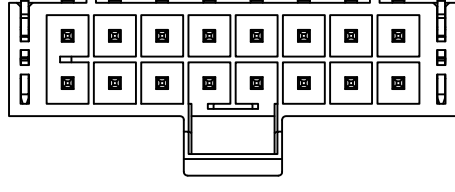
2x7P  
KEY A



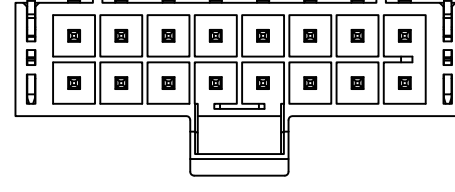
2x6P  
KEY B



2x7P  
KEY B



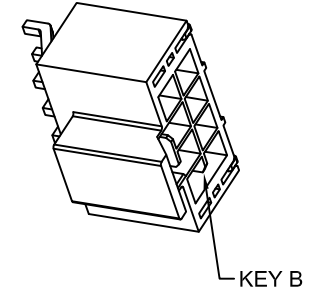
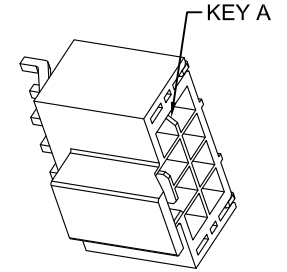
2x8P  
KEY A



2x8P  
KEY B

Ordering Information:  
HDGC2509WRA-S-2xXP - \*\*\*  
1 2

- Part No.
- Color.  
(Blank):Black,KAY A  
NAT:Natural,KAY B



**SPECIFICATIONS:**

Current Rating: 6.5A AC,DC  
Voltage Rating: 250V AC,DC  
Temperature Range:-25°C ~ +85°C  
Contact Resistance: 10mΩ Max  
Insulation Resistance: 1000MΩ Min  
Withstanding Voltage:1500VAC/minute  
Pin Material: Brass/Tin over Nickel  
Material: LCP,UL94V-0(Black)

**Ordering Information & Dimensions**

Circuits	Dimensions(mm)			Circuits	Dimensions(mm)		
	A	B	C		A	B	C
2x2P	2.50	8.74	7.04	2x6P	12.50	18.74	17.04
2x3P	5.00	11.24	9.54	2x7P	15.00	21.24	19.54
2x4P	7.50	13.74	12.04	2x8P	17.50	23.74	22.04
2x5P	10.00	16.24	14.54				

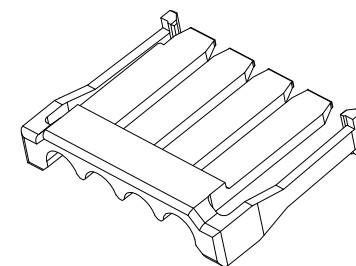
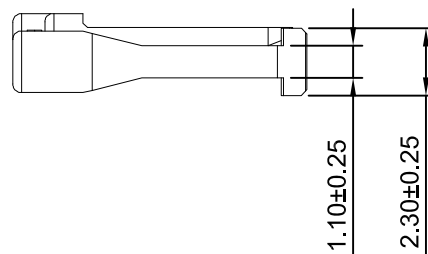
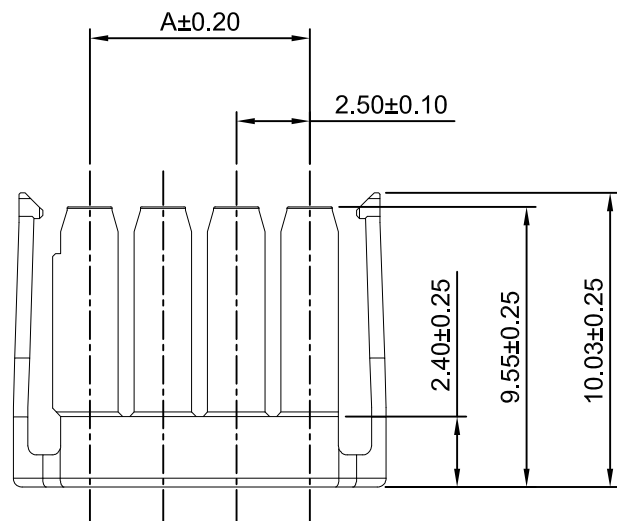


深圳市华德共创科技有限公司

Shenzhen Huade co-create Technology Co.,LTD  
TEL : 0755-27129737 FAX : 0755-29940187

-TOLERANCES- UNLESS OTHERWISE SPECIFIED 公差参数表						TITLE: 2.50mm Pitch 产品名称: 90° Wafer			
X.X	±0.30	X.X°	±3°	APPD: 核准:	XIE	PART NO: 产品编号: HDGC2509WRA-S-2xXP			
X.XX	±0.30	X.XX°	±2°	CHECK: 校对:	WANG	DATE	SCALE	UNIT	CODE NUMBER
X.XXX	±0.10	X.XXX°	±1°	DRAW: 绘图:	WANG	2018-08-22	2.5:1	mm	A008

修订 REV	标记 MARK	修改摘要 REVISION DESCRIPTION	签名 SIGNATURE	日期 DATE
AO		NEW RELEASE	WANG	2019-06-22



**Ordering Information:**

HDGC2509SA-XP - \*\*\*  
1 2

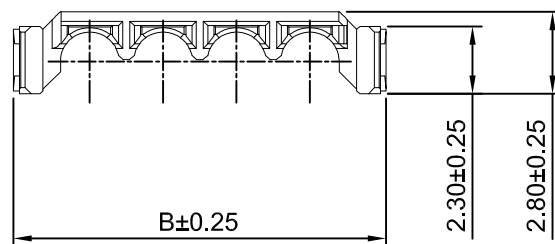
- 1.Part No.
- 2.Color:  
(Blank);Black  
NAT:Natural

**SPECIFICATIONS:**

Current Rating: 3A AC,DC  
Voltage Rating: 250V AC,DC  
Temperature Range: -25°C ~ +85°C  
Contact Resistance: 20mΩ Max  
Insulation Resistance: 1000MΩ Min  
Withstanding Voltage:1000VAC/minute  
Material: PA4T,UL94V-0(Black)

**Ordering Information & Dimensions**

Circuits	Dimensions(mm)		Circuits	Dimensions(mm)	
	A	B		A	B
2P	2.50	7.70	6P	12.50	17.70
3P	5.00	10.20	7P	15.00	20.20
4P	7.50	12.70	8P	17.50	22.70
5P	10.00	15.20	---	---	---



**HDGC** 深圳市华德共创科技有限公司  
Shenzhen Huade co-create Technology Co.,LTD  
TEL : 0755-27129737 FAX : 0755-29940187

-TOLERANCES- UNLESS OTHERWISE SPECIFIED 公差参数表				TITLE: 产品名称: 2.50mm Pitch Seal	
X.X	±0.30	X.X°	±3°	APPD: 核准:	XIE
X.XX	±0.30	X.XX°	±2°	CHECK: 校对:	WANG
X.XXX	±0.10	X.XXX°	±1°	DRAW: 绘图:	WANG
PART NO: 产品编号:		HDGC2509SA-XP			
DATE	SCALE	UNIT	CODE NUMBER		
2019-06-22	4:1	mm	A008		