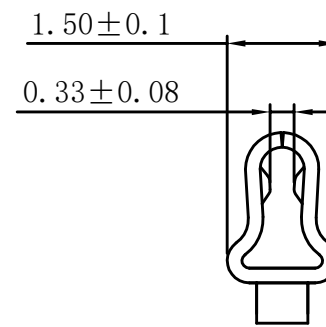
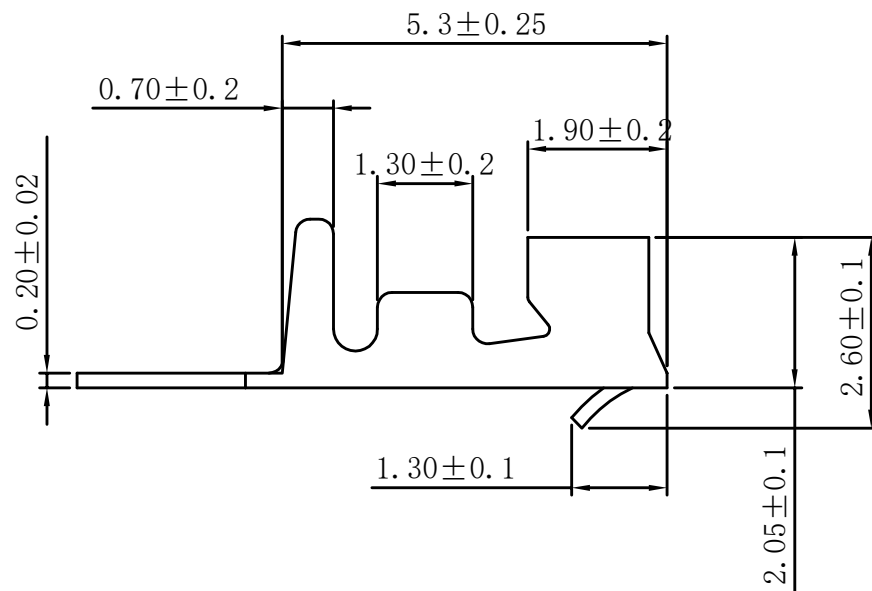
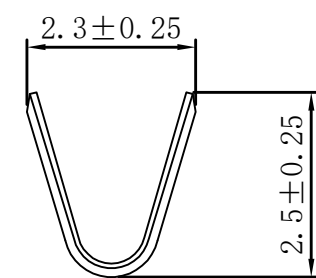
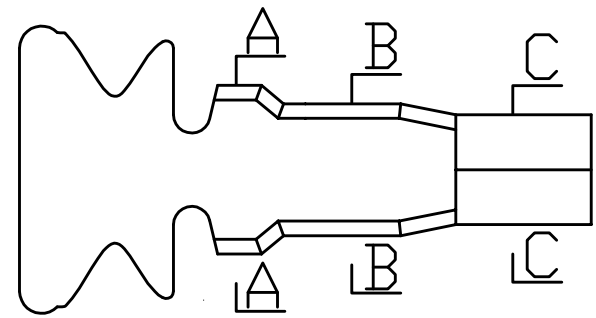


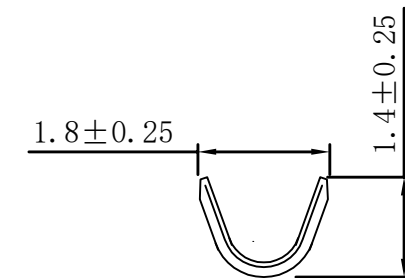
修订 REV	标记 MARK	修改摘要 REVISION DESCRIPTION	签名 SIGNATURE	日期 DATE
AO		NEW RELEASE	WANG	2015-10-09



C-C旋转



A-A旋转



B-B旋转

Ordering information & Specifications

Unit:mm

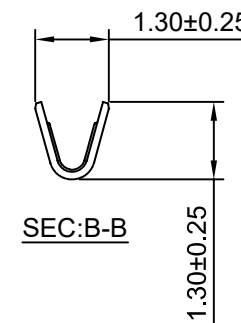
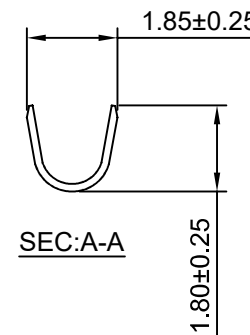
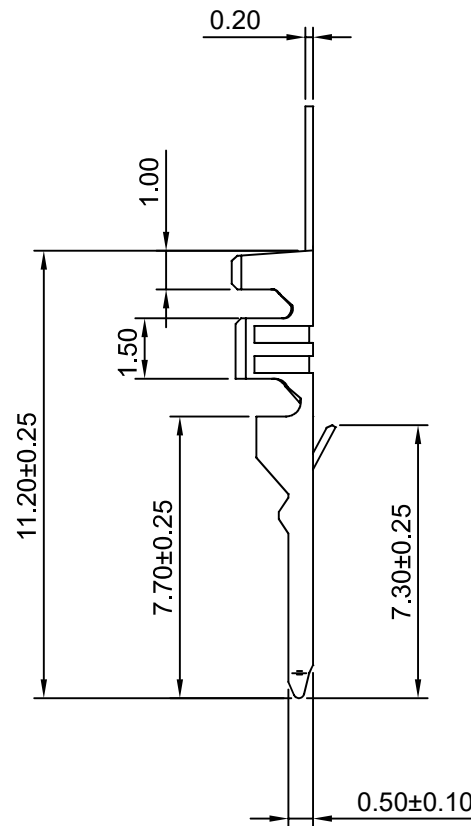
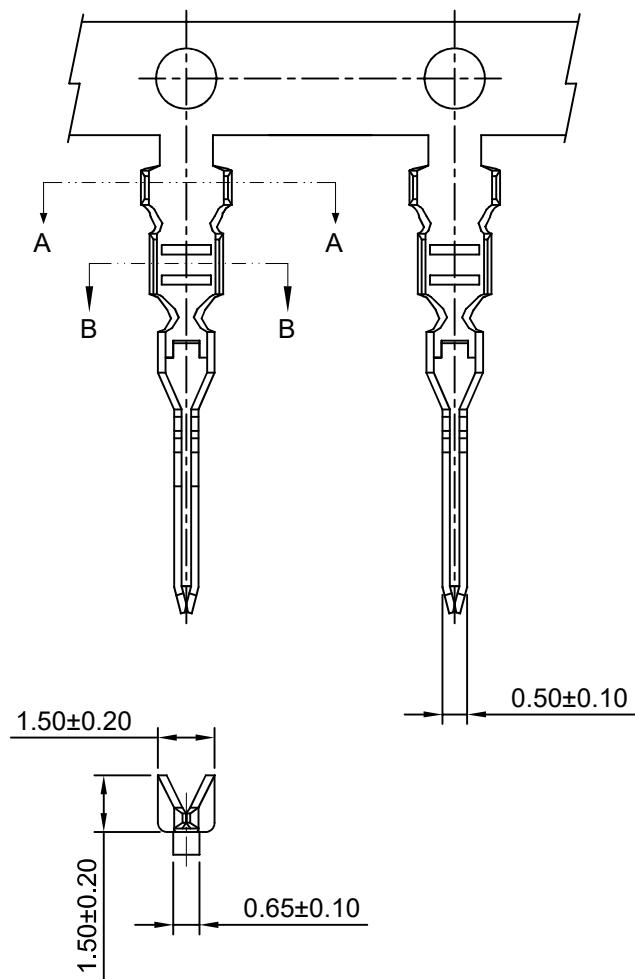
Part No	Wire Range	Insultion O.D.	Material	Finish	Qty/reel
HDGC2001-TP	AWG#24-#30	1.50mm(max)	Phosphor Bronze	Tin over Nickel	10,000 PCS
HDGC2001-GP	AWG#24-#30	1.50mm(max)	Phosphor Bronze	Gold over Nickel	10,000 PCS

Optional Gold plating available but MOQ requested

HDGC 深圳市华德共创科技有限公司
 Shenzhen Huade co-create Technology Co.,LTD
 TEL : 0755-27129737 FAX : 0755-29940187

-TOLERANCES- UNLESS OTHERWISE SPECIFIED 公差参数表						TITLE: 2.00mm Pitch 产品名称: Crimp Terminal			
X.X	±0.30	X.X°	±3°	APPD: 核准:	XIE	PART NO: 产品编号: HDGC2001-T			
X.XX	±0.30	X.XX°	±2°	CHECK: 校对:	WANG	DATE	SCALE	UNIT	CODE NUMBER
X.XXX	±0.10	X.XXX°	±1°	DRAW: 绘图:	WANG	2015-10-09	8:1	mm	A001

修订 REV	标记 MARK	修改摘要 REVISION DESCRIPTION	签名 SIGNATURE	日期 DATE
AO		NEW RELEASE	WANG	2017-07-10



Ordering information & Specifications

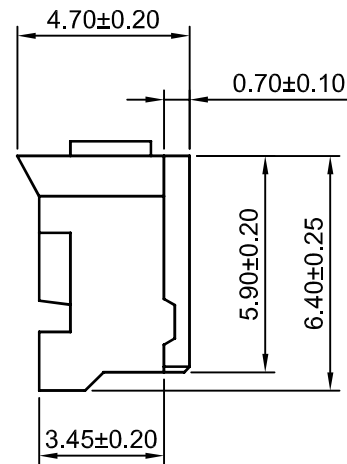
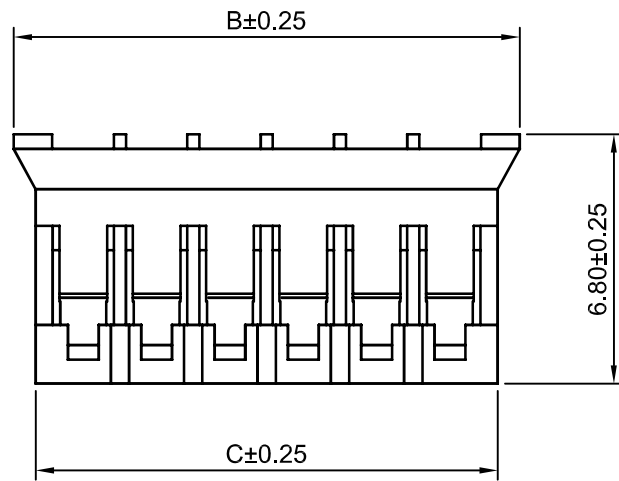
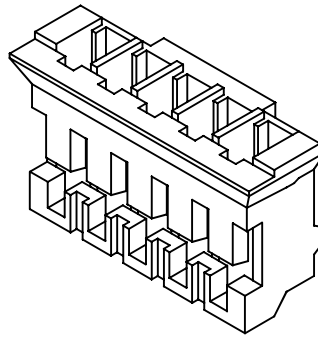
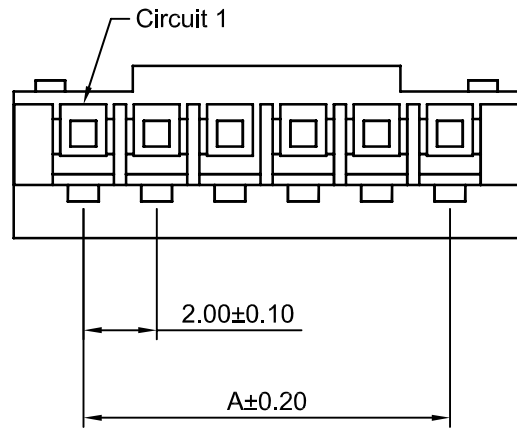
Unit:mm

Part No	Wire Range	Insultion O.D.	Material	Finish	Qty/reel
HDGC2001M-TB	AWG#24-#30	1.50mm(max)	Brass	Tin over Nickel	10,000 PCS
HDGC2001M-TP	AWG#24-#30	1.50mm(max)	Phosphor Bronze	Tin over Nickel	10,000 PCS
HDGC2001M-GB	AWG#24-#30	1.50mm(max)	Brass	Gold over Nickel	10,000 PCS
HDGC2001M-GP	AWG#24-#30	1.50mm(max)	Phosphor Bronze	Gold over Nickel	10,000 PCS

Optional Gold plating available but MOQ requested

 深圳市华德共创科技有限公司 Shenzhen Huade co-create Technology Co.,LTD TEL : 0755-27129737 FAX : 0755-29940187			TITLE: 2.00mm Pitch 产品名称: Crimp Terminal	
-TOLERANCES- UNLESS OTHERWISE SPECIFIED 公差参数表				
X.X	±0.30	X.X°	±3°	APPD: 核准: XIE PART NO: HDGC2001M-T 产品编号:
X.XX	±0.30	X.XX°	±2°	CHECK: 校对: WANG DATE SCALE UNIT CODE NUMBER
X.XXX	±0.10	X.XXX°	±1°	DRAW: 绘图: WANG 2017-07-10 5:1 mm A008

修订 REV	标记 MARK	修改摘要 REVISION DESCRIPTION	签名 SIGNATURE	日期 DATE
AO		NEW RELEASE	WANG	2017-07-10



Ordering Information & Dimensions

Circuits	Dimensions(mm)			Circuits	Dimensions(mm)		
	A	B	C		A	B	C
2P	2.00	5.80	4.60	12P	22.00	25.80	24.60
3P	4.00	7.80	6.60	13P	24.00	27.80	26.60
4P	6.00	9.80	8.60	14P	26.00	29.80	28.60
5P	8.00	11.80	10.60	15P	28.00	31.80	30.60
6P	10.00	13.80	12.60	16P	30.00	33.80	32.60
7P	12.00	15.80	14.60	17P	32.00	35.80	34.60
8P	14.00	17.80	16.60	18P	34.00	37.80	36.60
9P	16.00	19.80	18.60	19P	36.00	39.80	38.60
10P	18.00	21.80	20.60	20P	38.00	41.80	40.60
11P	20.00	23.80	22.60				

SPECIFICATIONS:

Current Rating: 2A AC,DC
Voltage Rating: 100V AC,DC
Temperature Range: -25°C~+85°C
Contact Resistance: 10mΩ Max.
Insulation Resistance: 1000MΩ Min.
Withstanding Voltage: 800V AC/minute
Material: Nylon 66,UL94V-0 (White)



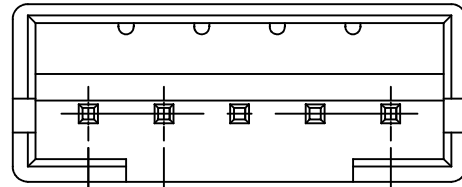
深圳市华德共创科技有限公司

Shenzhen Huade co-create Technology Co.,LTD

TEL : 0755-27129737 FAX : 0755-29940187

-TOLERANCES- UNLESS OTHERWISE SPECIFIED 公差参数表						TITLE: 产品名称: 2.00mm Pitch Housing			
X.X	±0.30	X.X°	±3°	APPD: 核准:	XIE	PART NO: 产品编号: HDGC2001H-XP			
X.XX	±0.30	X.XX°	±2°	CHECK: 校对:	WANG	DATE	SCALE	UNIT	CODE NUMBER
X.XXX	±0.10	X.XXX°	±1°	DRAW: 绘图:	WANG	2017-07-10	5:1	mm	A023

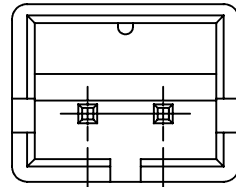
修订 REV	标记 MARK	修改摘要 REVISION DESCRIPTION	签名 SIGNATURE	日期 DATE
AO		NEW RELEASE	WANG	2017-07-10



2.00±0.10

A±0.20

3P~20P

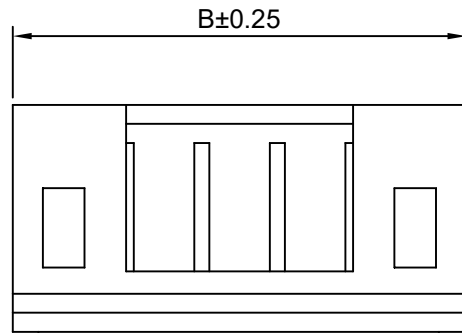


A±0.10

2P

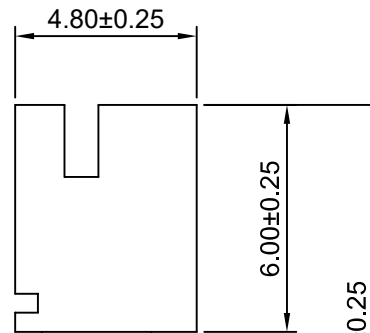
Ordering Information:
HDGC2001HM-XP - **
1 2

1.Part No.
2.Color:
(Blank):White
RD:Red
YL:Yellow
BL:Blue
BK:Black
GN:Green



B±0.25

C±0.25



4.80±0.25

6.00±0.25

12.70±0.25

2.90±0.20

Ordering Information & Dimensions

Circuits	Dimensions(mm)			Circuits	Dimensions(mm)		
	A	B	C		A	B	C
2P	2.00	6.00	4.60	12P	22.00	26.00	24.60
3P	4.00	8.00	6.60	13P	24.00	28.00	26.60
4P	6.00	10.00	8.60	14P	26.00	30.00	28.60
5P	8.00	12.00	10.60	15P	28.00	32.00	30.60
6P	10.00	14.00	12.60	16P	30.00	34.00	32.60
7P	12.00	16.00	14.60	17P	32.00	36.00	34.60
8P	14.00	18.00	16.60	18P	34.00	38.00	36.60
9P	16.00	20.00	18.60	19P	36.00	40.00	38.60
10P	18.00	22.00	20.60	20P	38.00	42.00	40.60
11P	20.00	24.00	22.60				

SPECIFICATIONS:

Current Rating: 2A AC,DC
Voltage Rating:100V AC,DC
Temperature Range: -25°C ~ +85°C
Contact Resistance: 10mΩ Max.
Insulation Resistance: 1000MΩ Min.
Withstanding Voltage: 800V AC/minute
Material: Nylon 66,UL94V-0 (White)

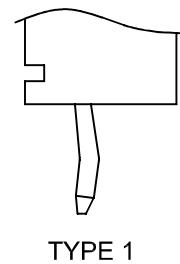
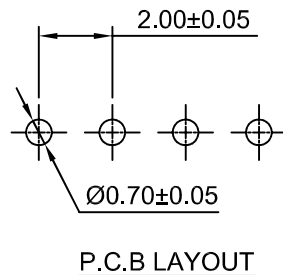
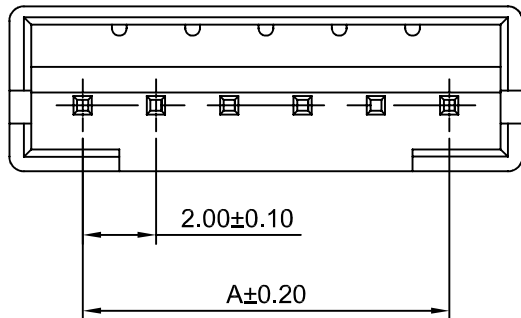


深圳市华德共创科技有限公司

Shenzhen Huade co-create Technology Co.,LTD
TEL : 0755-27129737 FAX : 0755-29940187

-TOLERANCES- UNLESS OTHERWISE SPECIFIED 公差参数表						TITLE: 产品名称: 2.00mm Pitch Housing			
X.X	±0.30	X.X°	±3°	APPD: 核准:	XIE	PART NO: 产品编号: HDGC2001HM-XP			
X.XX	±0.30	X.XX°	±2°	CHECK: 校对:	WANG	DATE	SCALE	UNIT	CODE NUMBER
X.XXX	±0.10	X.XXX°	±1°	DRAW: 绘图:	WANG	2017-07-10	5:1	mm	A008

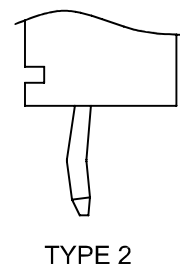
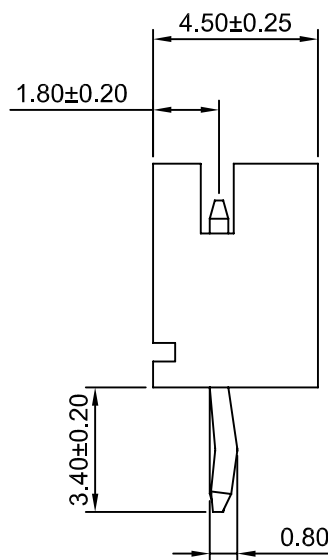
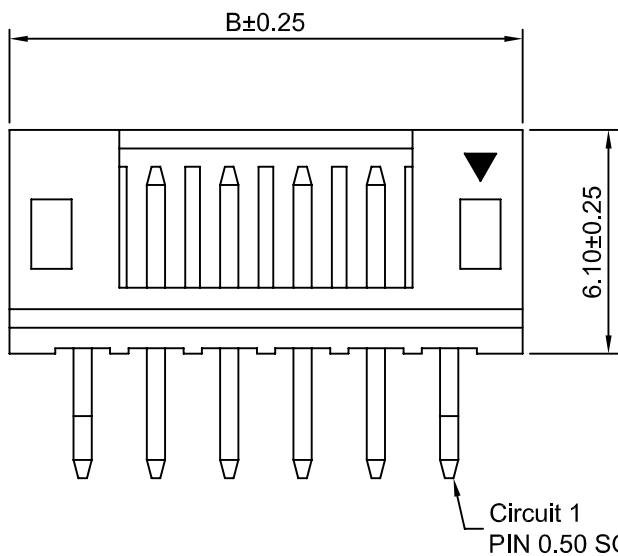
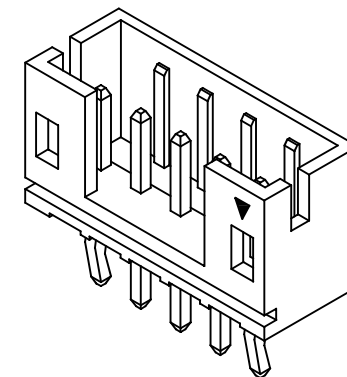
修订 REV	标记 MARK	修改摘要 REVISION DESCRIPTION	签名 SIGNATURE	日期 DATE
AO		NEW RELEASE	WANG	2017-07-10



TYPE 1

Ordering Information:
HDGC2001WV-XP - ** - **
1 2 3

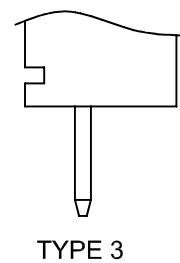
1. Part No.
2. Style:
(blank) -Type 1
2 -Type 2
3 -Type 3
3. Color:
(blank) -White
GN -Green
RD -Red



TYPE 2

Ordering Information & Dimensions

Circuits	Dimensions(mm)		Circuits	Dimensions(mm)	
	A	B		A	B
2P	2.00	6.00	12P	22.00	26.00
3P	4.00	8.00	13P	24.00	28.00
4P	6.00	10.00	14P	26.00	30.00
5P	8.00	12.00	15P	28.00	32.00
6P	10.00	14.00	16P	30.00	34.00
7P	12.00	16.00	17P	32.00	36.00
8P	14.00	18.00	18P	34.00	38.00
9P	16.00	20.00	19P	36.00	40.00
10P	18.00	22.00	20P	38.00	42.00
11P	20.00	24.00			



TYPE 3

SPECIFICATIONS:

Current Rating: 2A AC,DC
Voltage Rating: 100V AC,DC
Temperature Range: -25°C ~ +85°C
Contact Resistance: 10mΩ Max.
Insulation Resistance: 1000MΩ Min.
Withstanding Voltage: 800V AC/minute
Pin Material: Brass/Tin over Nickel
Material: Nylon 66, UL94V-0(White)

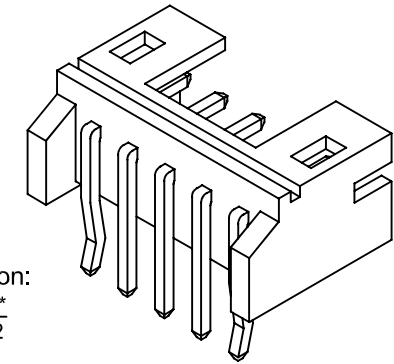
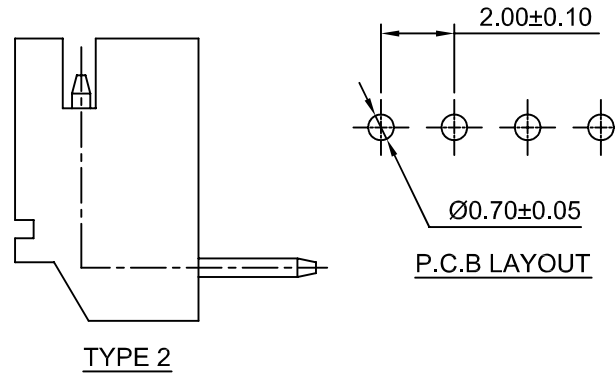
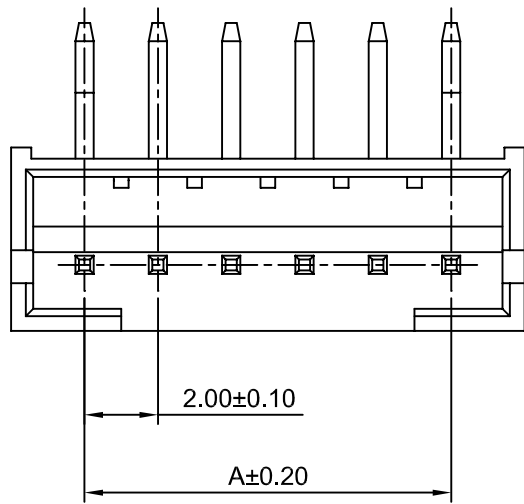


深圳市华德共创科技有限公司

Shenzhen Huade co-create Technology Co., LTD
TEL : 0755-27129737 FAX : 0755-29940187

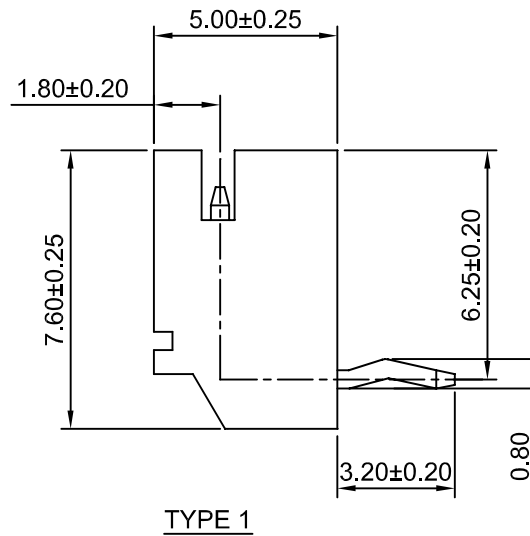
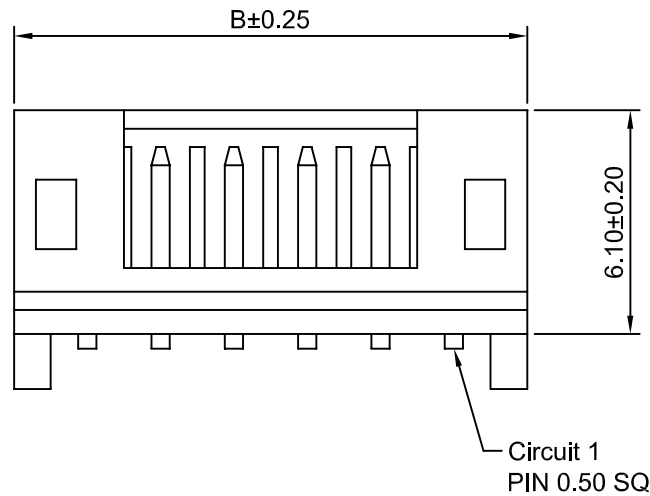
-TOLERANCES- UNLESS OTHERWISE SPECIFIED 公差参数表				TITLE: 产品名称: 2.00mm Pitch 180° Wafer	
X.X	±0.30	X.X°	±3°	APPD: 核准:	XIE
X.XX	±0.30	X.XX°	±2°	CHECK: 校对:	WANG
X.XXX	±0.10	X.XXX°	±1°	DRAW: 绘图:	WANG
PART NO: 产品编号:			HDGC2001WV-XP		
DATE	SCALE	UNIT	CODE NUMBER		
2017-07-10	5:1	mm	A008		

修订 REV	标记 MARK	修改摘要 REVISION DESCRIPTION	签名 SIGNATURE	日期 DATE
AO		NEW RELEASE	WANG	2017-07-10



Ordering Information:
HDGC2001WR-XP - **

1. Part No.
2. Style:
(blank) -Type 1
2 -Type 2



Ordering Information & Dimensions

Circuits	Dimensions(mm)		Circuits	Dimensions(mm)	
	A	B		A	B
2P	2.00	6.00	12P	22.00	26.00
3P	4.00	8.00	13P	24.00	28.00
4P	6.00	10.00	14P	26.00	30.00
5P	8.00	12.00	15P	28.00	32.00
6P	10.00	14.00	16P	30.00	34.00
7P	12.00	16.00	17P	32.00	36.00
8P	14.00	18.00	18P	34.00	38.00
9P	16.00	20.00	19P	36.00	40.00
10P	18.00	22.00	20P	38.00	42.00
11P	20.00	24.00			

SPECIFICATIONS:

Current Rating: 2A AC,DC
Voltage Rating: 100V AC,DC
Temperature Range: -25°C~+85°C
Contact Resistance: 10mΩ Max.
Insulation Resistance: 1000MΩ Min.
Withstanding Voltage: 800V AC/minute
Pin Material: Brass/Tin over Nickel
Material: Nylon 33 (L94V) White

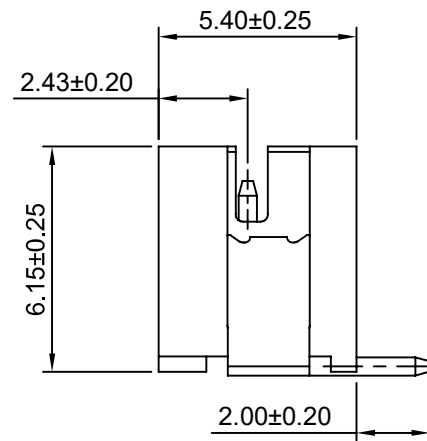
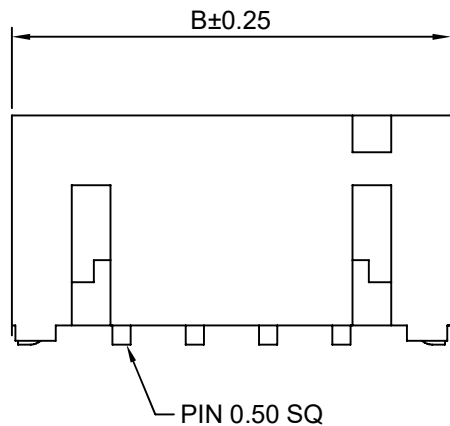
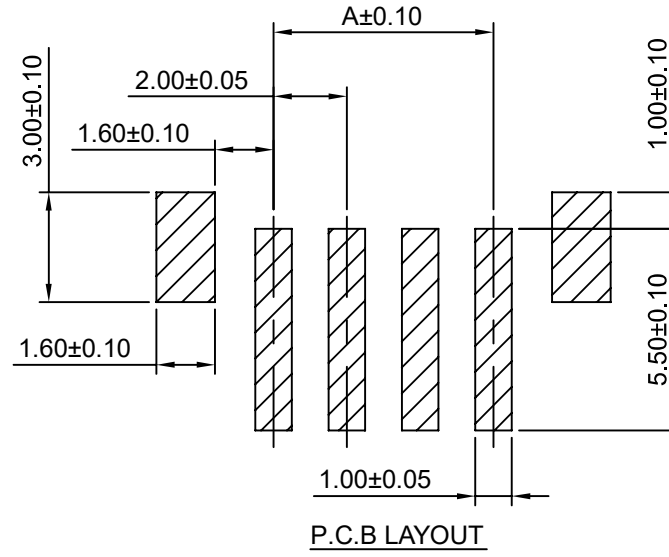
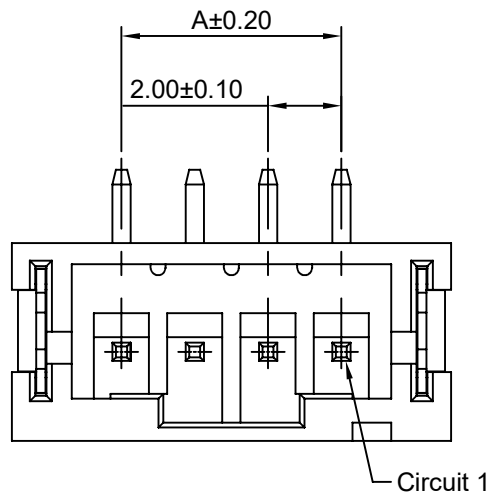
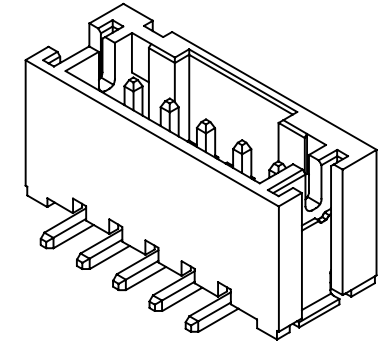


深圳市华德共创科技有限公司

Shenzhen Huade co-create Technology Co.,LTD
TEL : 0755-27129737 FAX : 0755-29940187

-TOLERANCES- UNLESS OTHERWISE SPECIFIED 公差参数表				TITLE: 产品名称: 2.00mm Pitch 90° Wafer	
X.X	±0.30	X.X°	±3°	APPD: 核准:	XIE
X.XX	±0.30	X.XX°	±2°	CHECK: 校对:	WANG
X.XXX	±0.10	X.XXX°	±1°	DRAW: 绘图:	WANG
PART NO: 产品编号:				HDGC2001WR-XP	
DATE		SCALE	UNIT	CODE NUMBER	
2017-07-10		5:1	mm	A008	

修订 REV	标记 MARK	修改摘要 REVISION DESCRIPTION	签名 SIGNATURE	日期 DATE
AO		NEW RELEASE	WANG	2017-07-10



Ordering Information & Dimensions

Circuits	Dimensions(mm)		Circuits	Dimensions(mm)	
	A	B		A	B
2P	2.00	8.00	12P	22.00	28.00
3P	4.00	10.00	13P	24.00	30.00
4P	6.00	12.00	14P	26.00	32.00
5P	8.00	14.00	15P	28.00	34.00
6P	10.00	16.00	16P	30.00	36.00
7P	12.00	18.00	17P	32.00	38.00
8P	14.00	20.00	18P	34.00	40.00
9P	16.00	22.00	19P	36.00	42.00
10P	18.00	24.00	20P	38.00	44.00
11P	20.00	26.00			

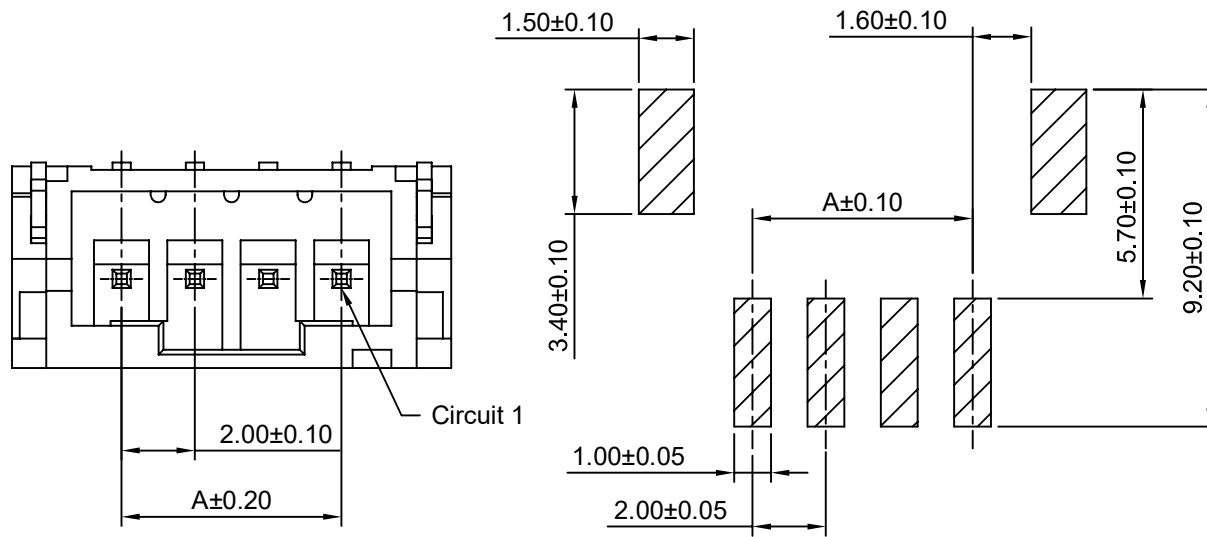
SPECIFICATIONS:

Current Rating: 2A AC,DC
Voltage Rating: 100V AC,DC
Temperature Range: -25°C ~ +85°C
Contact Resistance: 10mΩ Max.
Insulation Resistance: 1000MΩ Min.
Withstanding Voltage: 800V AC/minute
Pin Material: Brass/Tin over Nickel
Solder Tabs: Brass/Tin over Nickel
Material: Nylon 6T, UL94V-0(Ivory)

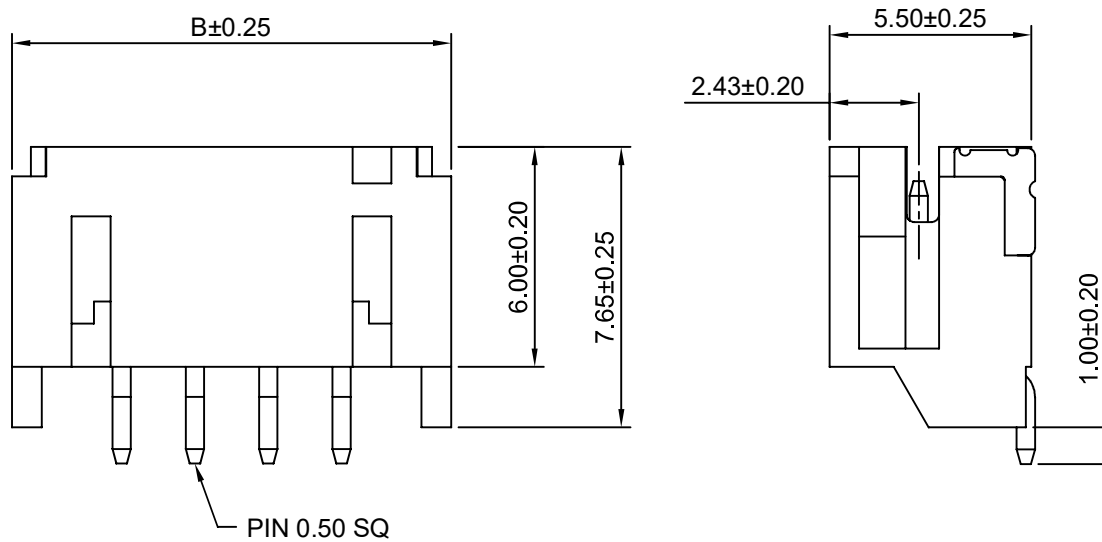
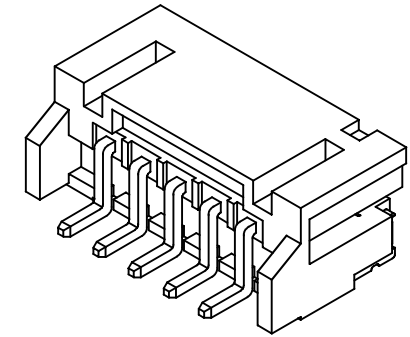
深圳市华德共创科技有限公司
Shenzhen Huade co-create Technology Co., LTD
TEL : 0755-27129737 FAX : 0755-29940187

-TOLERANCES- UNLESS OTHERWISE SPECIFIED 公差参数表					TITLE: 2.00mm Pitch 产品名称: 180° Wafer						
X.X	±0.30	X.X°	±3°	APPD: 核准:	XIE				PART NO: 产品编号:	HDGC2001WV-S-XP	
X.XX	±0.30	X.XX°	±2°	CHECK: 校对:	WANG		DATE	SCALE	UNIT	CODE NUMBER	
X.XXX	±0.10	X.XXX°	±1°	DRAW: 绘图:	WANG		2017-07-10	5:1	mm	A008	

修订 REV	标记 MARK	修改摘要 REVISION DESCRIPTION	签名 SIGNATURE	日期 DATE
AO		NEW RELEASE	WANG	2017-07-10



P.C.B LAYOUT



Ordering Information & Dimensions

Circuits	Dimensions(mm)		Circuits	Dimensions(mm)	
	A	B		A	B
2P	2.00	8.00	12P	22.00	28.00
3P	4.00	10.00	13P	24.00	30.00
4P	6.00	12.00	14P	26.00	32.00
5P	8.00	14.00	15P	28.00	34.00
6P	10.00	16.00	16P	30.00	36.00
7P	12.00	18.00	17P	32.00	38.00
8P	14.00	20.00	18P	34.00	40.00
9P	16.00	22.00	19P	36.00	42.00
10P	18.00	24.00	20P	38.00	44.00
11P	20.00	26.00			

SPECIFICATIONS:

Current Rating: 2A AC,DC
Voltage Rating: 100V AC,DC
Temperature Range: -25°C ~ +85°C
Contact Resistance: 10mΩ Max.
Insulation Resistance: 1000MΩ Min.
Withstanding Voltage: 800V AC/minute
Pin Material: Brass/Tin over Nickel
Solder Tabs: Brass/Tin over Nickel
Material: Nylon 6T,UL94V-0(Ivory)

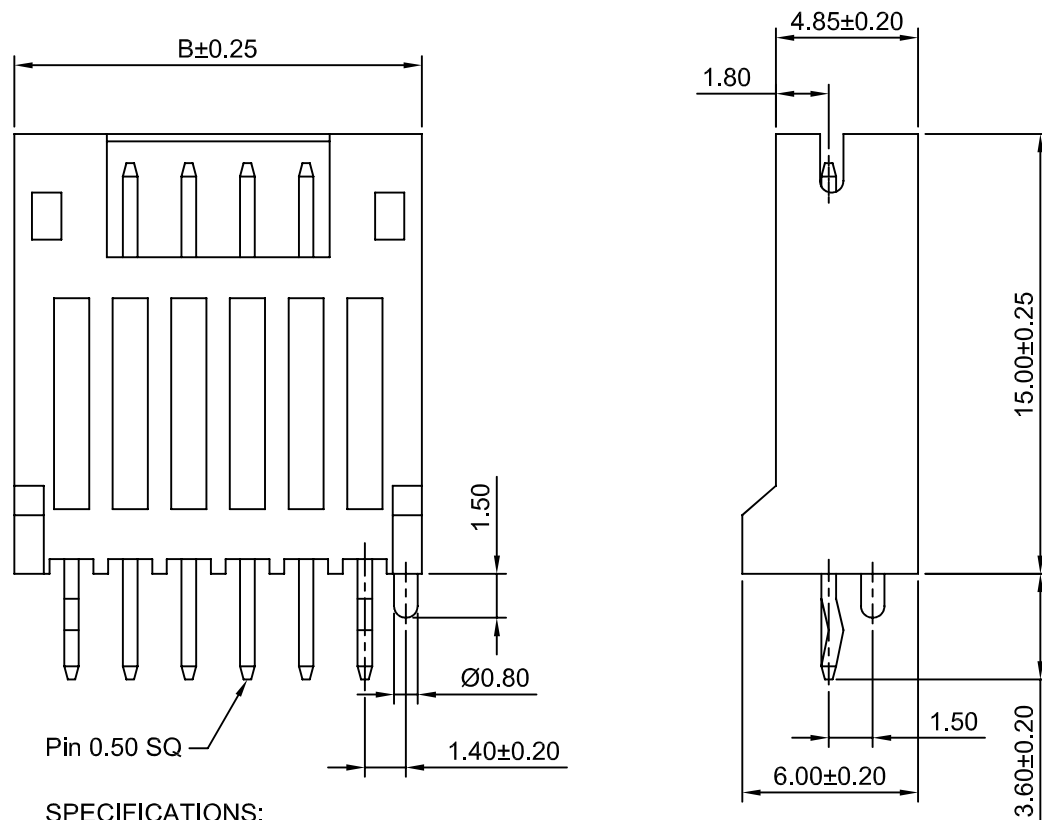
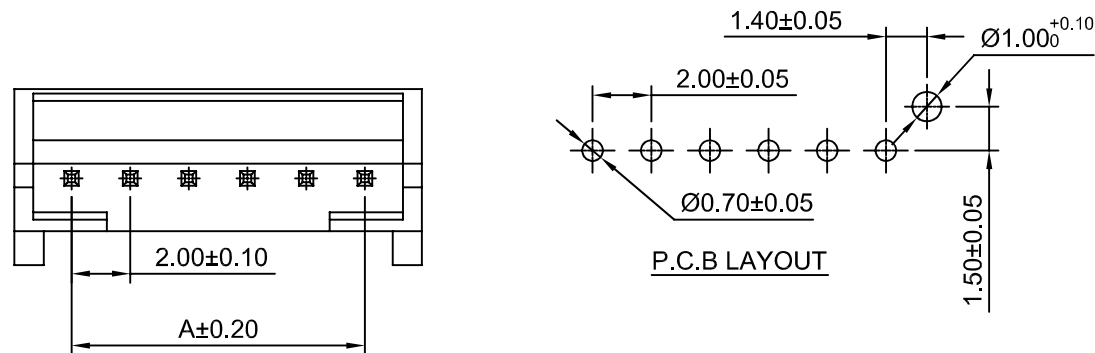


深圳市华德共创科技有限公司

Shenzhen Huade co-create Technology Co.,LTD
TEL : 0755-27129737 FAX : 0755-29940187

-TOLERANCES- UNLESS OTHERWISE SPECIFIED 公差参数表				TITLE: 产品名称: 2.00mm Pitch 90° Wafer	
X.X	±0.30	X.X°	±3°	APPD: 核准:	XIE
X.XX	±0.30	X.XX°	±2°	CHECK: 校对:	WANG
X.XXX	±0.10	X.XXX°	±1°	DRAW: 绘图:	WANG
PART NO: 产品编号:		HDGC2001WR-S-XP			
DATE	SCALE	UNIT	CODE NUMBER		
2017-07-10	5:1	mm	A008		

修订 REV	标记 MARK	修改摘要 REVISION DESCRIPTION	签名 SIGNATURE	日期 DATE
AO		NEW RELEASE	WANG	2017-07-10



SPECIFICATIONS:

Current Rating: 2A AC,DC
Voltage Rating:100V AC,DC
Temperature Range: -25°C ~ +85°C
Contact Resistance: 10mΩ Max.
Insulation Resistance: 1000MΩ Min.
Withstanding Voltage: 800V AC/minute
Pin Material: Brass/Tin over Nickel
Material: Nylon 66,UL94V-0(White)

Ordering Information & Dimensions

Circuits	Dimensions(mm)		Circuits	Dimensions(mm)	
	A	B		A	B
2P	2.00	6.00	12P	22.00	26.00
3P	4.00	8.00	13P	24.00	28.00
4P	6.00	10.00	14P	26.00	30.00
5P	8.00	12.00	15P	28.00	32.00
6P	10.00	14.00	16P	30.00	34.00
7P	12.00	16.00	17P	32.00	36.00
8P	14.00	18.00	18P	34.00	38.00
9P	16.00	20.00	19P	36.00	40.00
10P	18.00	22.00	20P	38.00	42.00
11P	20.00	24.00			



深圳市华德共创科技有限公司

Shenzhen Huade co-create Technology Co.,LTD
TEL : 0755-27129737 FAX : 0755-29940187

-TOLERANCES- UNLESS OTHERWISE SPECIFIED 公差参数表			 		TITLE: 2.00mm Pitch 产品名称: 180° Wafer			
X.X	±0.30	X.X°	±3°	APPD: 核准:	XIE			
X.XX	±0.30	X.XX°	±2°	CHECK: 校对:	WANG			
X.XXX	±0.10	X.XXX°	±1°	DRAW: 绘图:	WANG			
PART NO: 产品编号:					HDGC2001WV-F-XP-H			
DATE					SCALE	UNIT	CODE NUMBER	
2017-07-10					4:1	mm	A008	